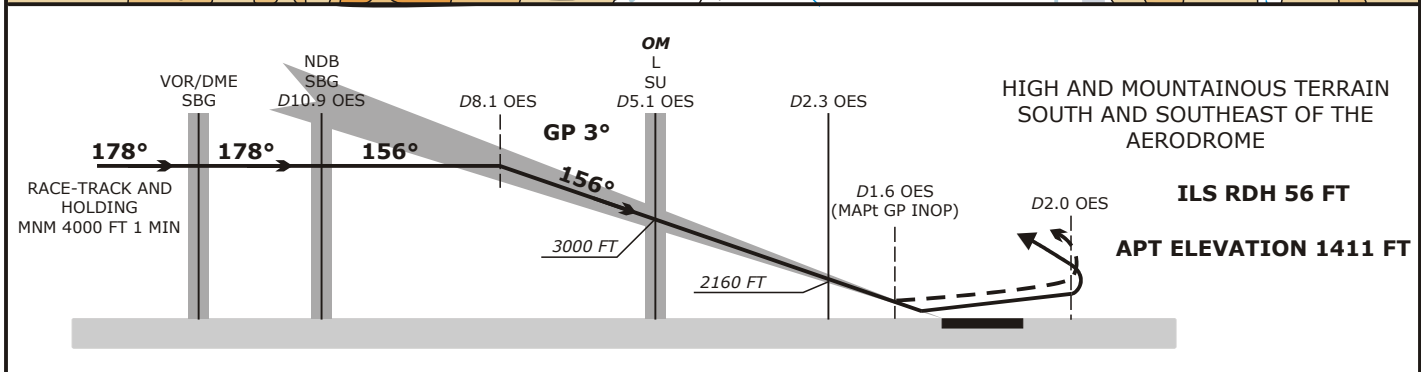
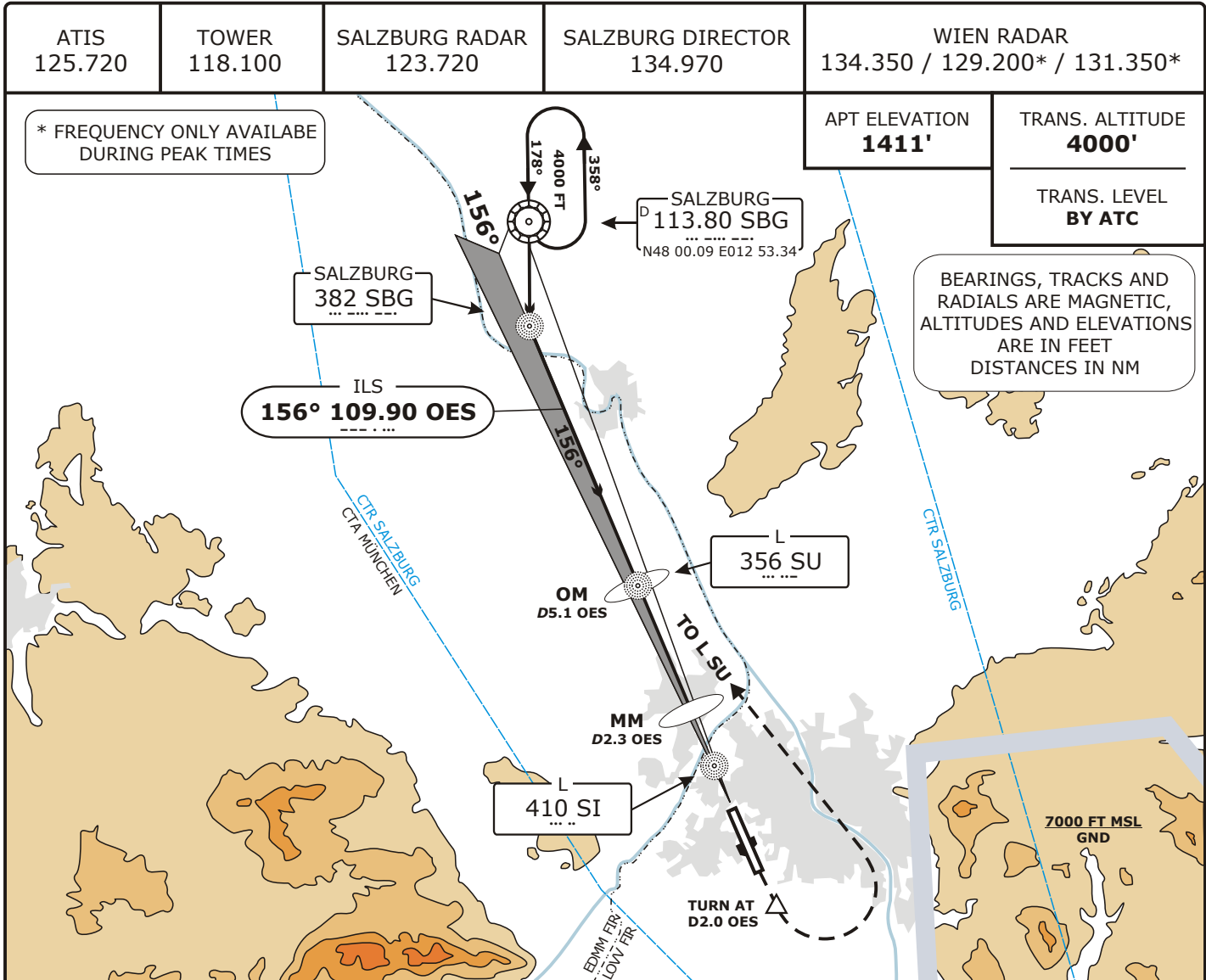


LOWS SALZBURG

Valid for flight simulation use only - do not use for real life navigation



MISSED APPROACH: CLIMB STRAIGHT AHEAD, AT D2.0 OES (SOUTH) LEFT TURN AND CLIMB VIA L SU TO NDB AND VOR SBG TO FL 60.

NOTE 1: Accelerate NOT before turn is complete and NOT below 2500 FT MSL.
NOTE 2: Observe the resulting speed limits and MNM bank angle!

CAT I	MA-CLIMB GRADIENT		OCA(H)	A	B	C	D	OM TO THR 16 DISTANCE 4.97 NM					
	STRAIGHT	TURN	MAX IAS	130 KT	130 KT	165 KT	165 KT	GS (KT)	60	80	100	120	150
	2,5 %	2,5 %	MNM BANK ANGLE	15°	15°	20°	25°	MIN:SEC	4:58	3:44	2:59	2:29	1:59
	3 %	2,5 %		1920 (500)	1920 (500)	2090 (670)	2200 (780)	FT/MIN	320	425	530	635	795
	4 %	3 %		1870 (450)	1870 (450)	2030 (610)	2130 (710)						
	5 %	3 %		1750 (330)	1750 (330)	1880 (460)	1970 (550)						
GP Inop	2,5 %	2,5 %		1720 (300)	1720 (300)	1800 (380)	1880 (460)						
	4 %	3 %		1920 (500)	1920 (500)	2090 (670)	2200 (780)						
				1840 (420)	1840 (420)	1880 (460)	1970 (550)						

CIRCLING

See LOWS VIS-CHART

CHANGES: MISSED APPROACH; EDITORIAL.