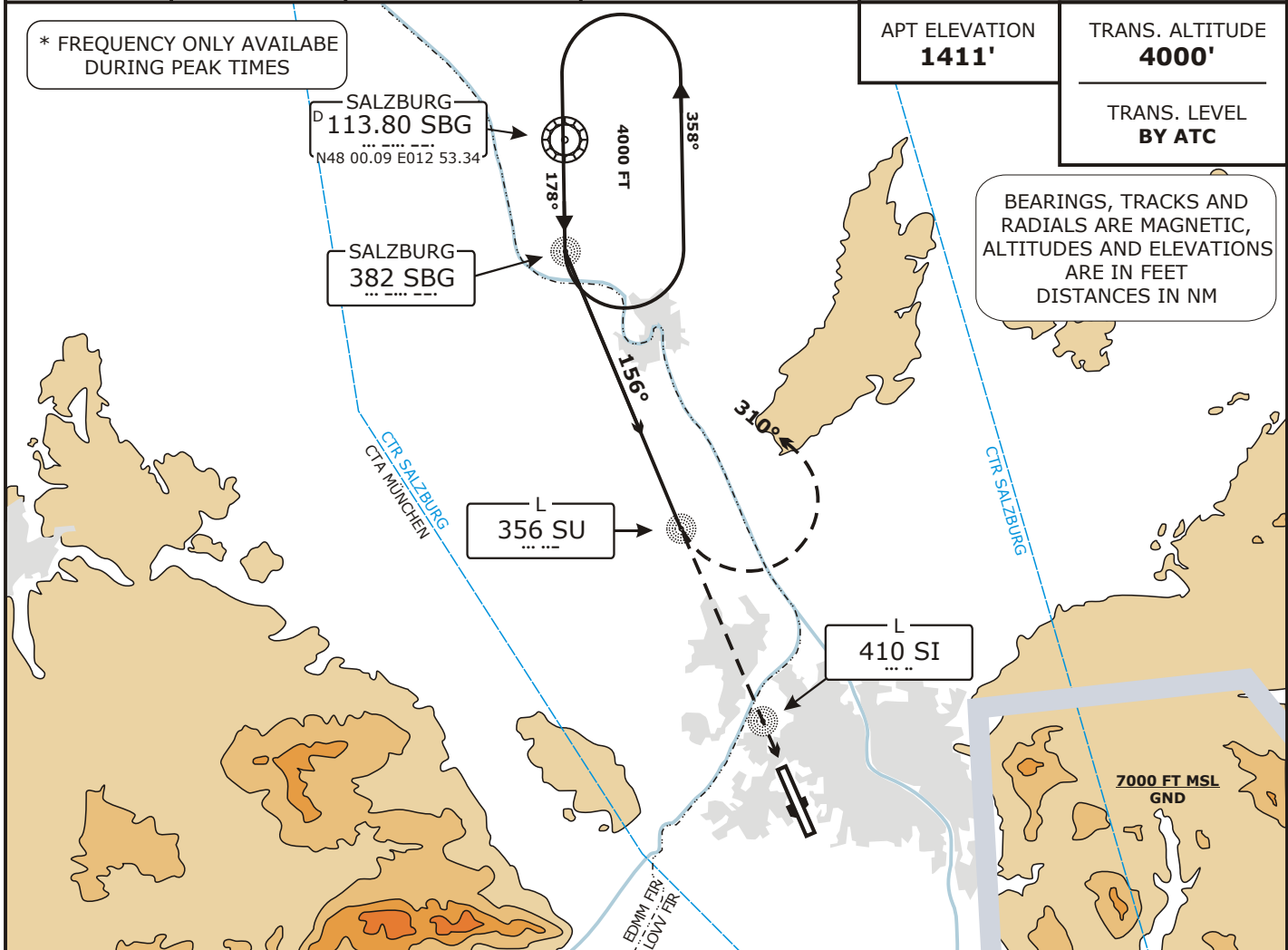


**LOWS SALZBURG**

Valid for flight simulation use only - do not use for real life navigation

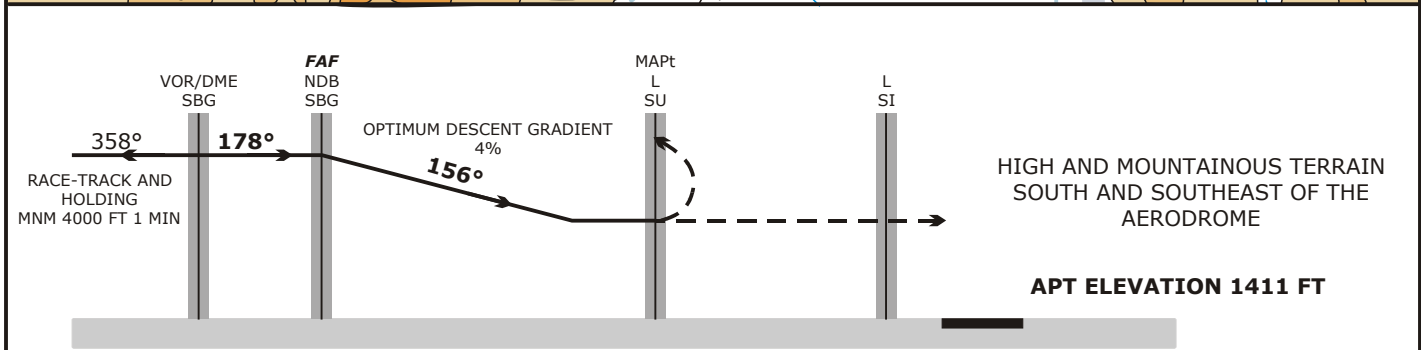
ATIS 125.720	TOWER 118.100	SALZBURG RADAR 123.720	SALZBURG DIRECTOR 134.970	WIEN RADAR 134.350 / 129.200* / 131.350*
-----------------	------------------	---------------------------	------------------------------	---



\* FREQUENCY ONLY AVAILABE DURING PEAK TIMES

APT ELEVATION <b>1411'</b>	TRANS. ALTITUDE <b>4000'</b>
TRANS. LEVEL <b>BY ATC</b>	

BEARINGS, TRACKS AND RADIALS ARE MAGNETIC, ALTITUDES AND ELEVATIONS ARE IN FEET DISTANCES IN NM



**MISSED APPROACH:** AT L SU LEFT TURN HEADING 310° TO NDB SBG. CLIMB TO FL 60 AND ENTER THE HOLDING.

OCA (OCH)	MA CLIMB GRADIENT	A	B	C	D	NDB SBG TO L SU - DISTANCE 5.75 NM L SU TO THR 16 - DISTANCE 4.97 NM						
<b>STRAIGHT-IN APPROACH</b>	2.5 %	2760 (1350)				GS (KT)	60	80	100	120	150	
	3 %	2710 (1300)										
	4 %	2610 (1200)				<b>NDB SBG</b>	MIN:SEC	5:45	4:19	3:27	2:53	2:18
	5 %	2510 (1100)										
MNM REQ. FLIGHT VIS. AFTER L SU		2.8 KM		3.7 KM		<b>SU - THR</b>	MIN:SEC	4:58	3:44	2:59	2:29	1:59
<b>CIRCLING</b>		SEE LOWW VIS-CHART										

If landing after passing MDA (MDH) becomes impossible, climb on track 156° to MINIMUM 1850 FT MSL, TURN LEFT to L SU, then to NDB SBG.

**NOTE: MISSED APPROACH SPEED IS LIMITED TO 185 KT IAS UNTIL TURN IS COMPLETED!**

CHANGES: NEW CHART.