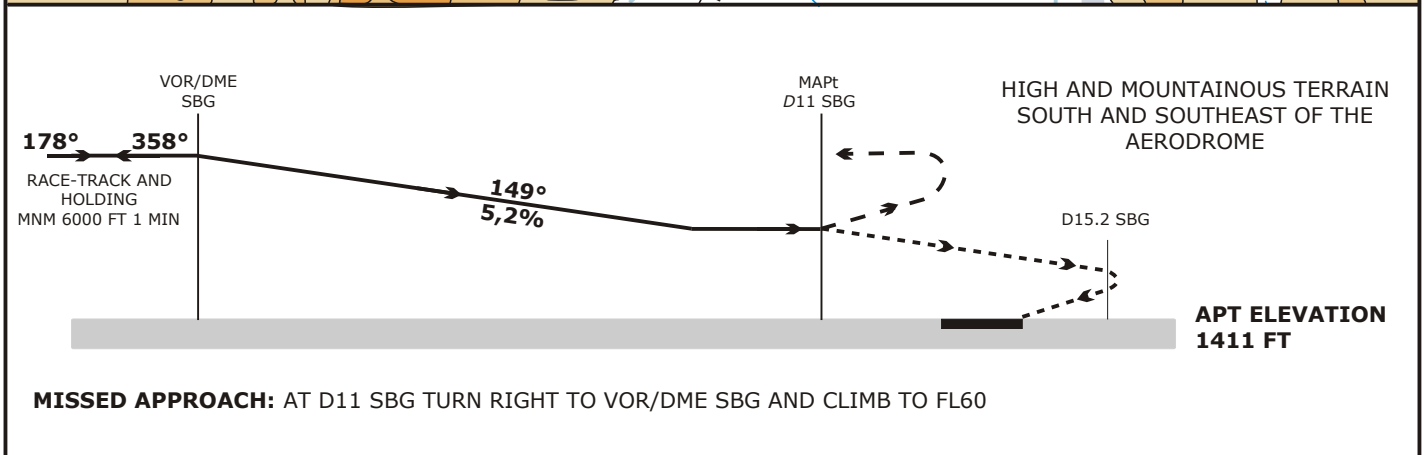
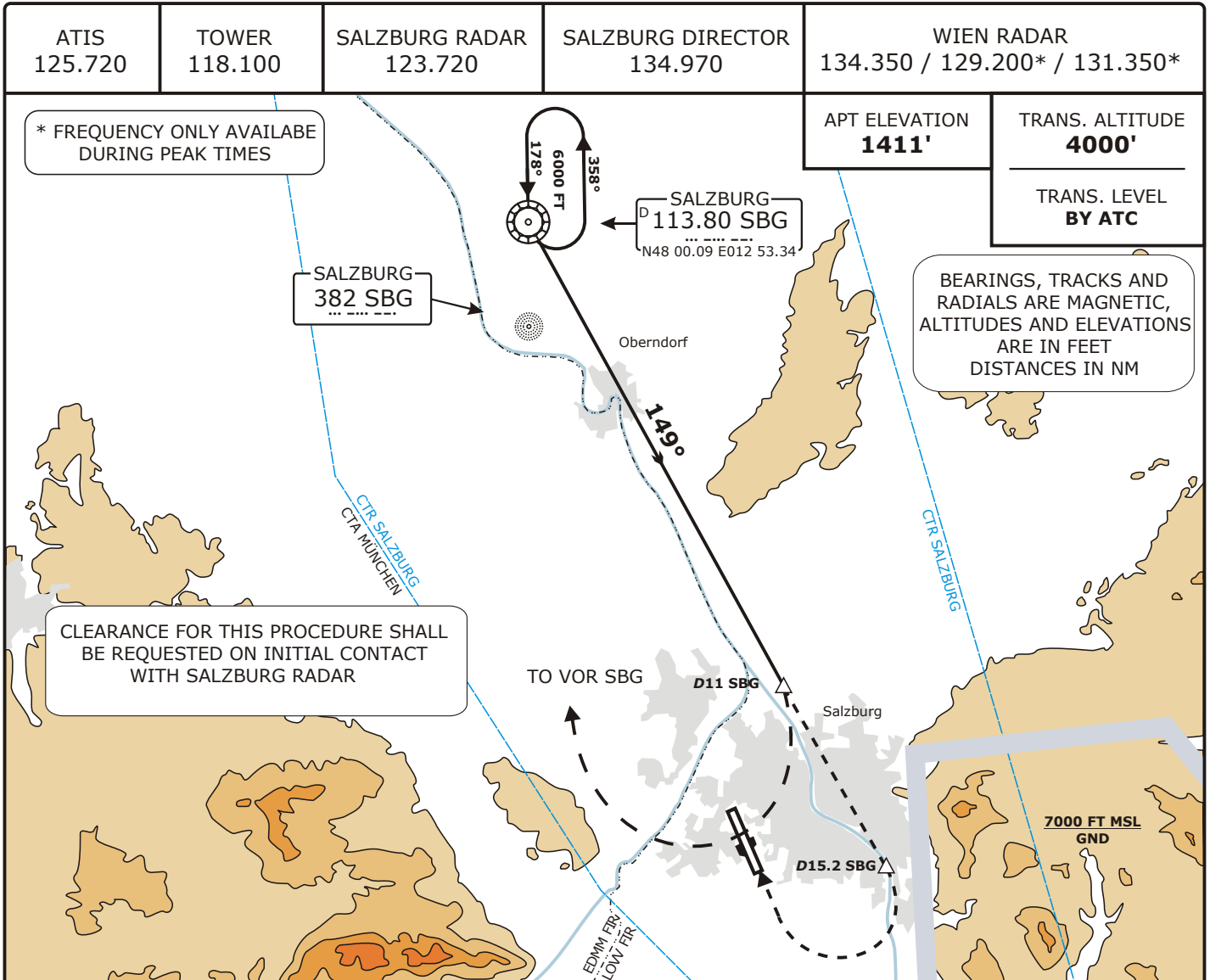


LOWS SALZBURG

Valid for flight simulation use only - do not use for real life navigation



MISSED APPROACH: AT D11 SBG TURN RIGHT TO VOR/DME SBG AND CLIMB TO FL60

VOR/DME	OCA (OCH)	A	B	C	D	VOR/DME SBG TO MAPt - DISTANCE 11 NM					
		3800 (2389 FT)					GS (KT)	60	80	100	120
	MIN:SEC						11:00	8:15	6:35	5:30	4:25

PROCEDURE REQUIRES AUTHORIZATION BY ATC!

CHANGES: NEW CHART