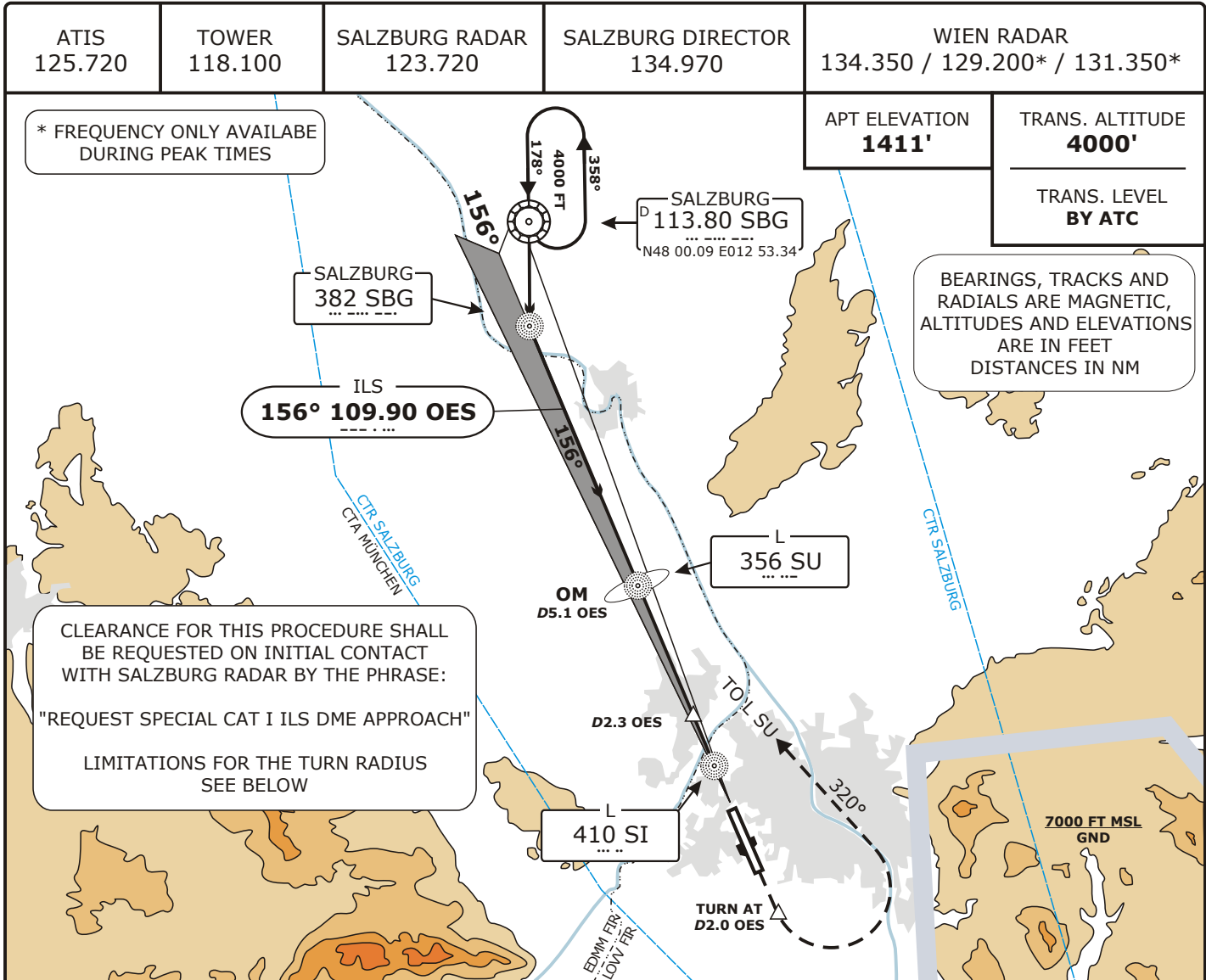


LOWS SALZBURG

Valid for flight simulation use only - do not use for real life navigation

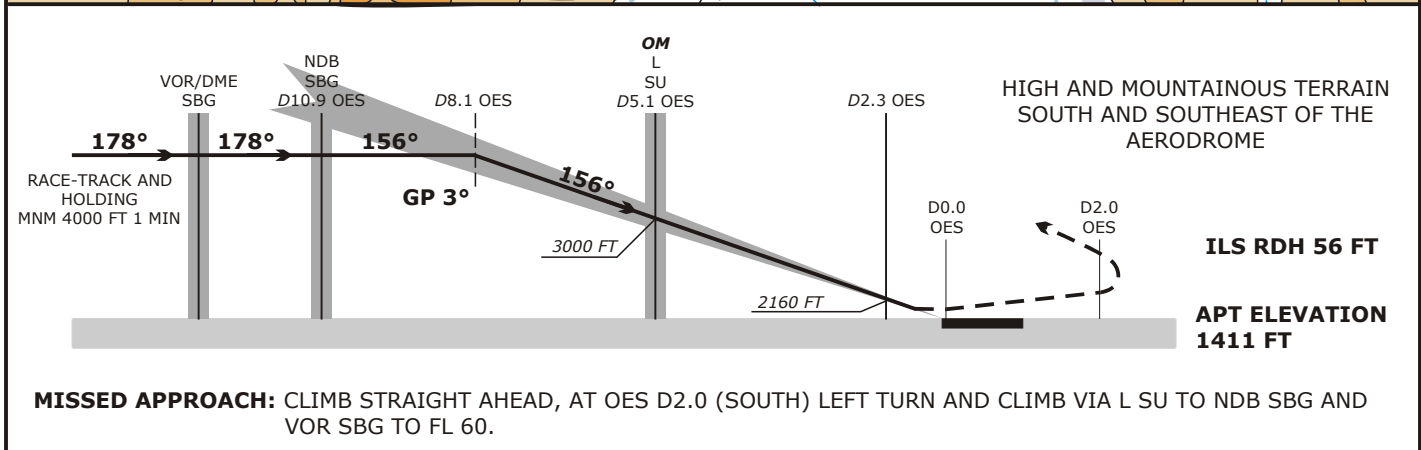


* FREQUENCY ONLY AVAILABE DURING PEAK TIMES

APT ELEVATION **1411'**
TRANS. ALTITUDE **4000'**
TRANS. LEVEL **BY ATC**

BEARINGS, TRACKS AND RADIALS ARE MAGNETIC, ALTITUDES AND ELEVATIONS ARE IN FEET DISTANCES IN NM

CLEARANCE FOR THIS PROCEDURE SHALL BE REQUESTED ON INITIAL CONTACT WITH SALZBURG RADAR BY THE PHRASE:
"REQUEST SPECIAL CAT I ILS DME APPROACH"
LIMITATIONS FOR THE TURN RADIUS SEE BELOW



MISSED APPROACH: CLIMB STRAIGHT AHEAD, AT OES D2.0 (SOUTH) LEFT TURN AND CLIMB VIA L SU TO NDB SBG AND VOR SBG TO FL 60.

SPECIAL CAT I: RDO Altim. and Coupled Approach required!	OCA (OCH)	MA CLIMB GRADIENT		MAX RADIUS OF TURN	E.g. for IAS MAX and BANK ANGLE	OM TO THR 16 - DISTANCE 4.97 NM					
		STRAIGHT	TURN			GS (KT)	60	80	100	120	150
	1611 (200)	4.2%	3.3%	1780 M	126 KT 15° 147 KT 20° 165 KT 25°	MIN:SEC	4:58	3:44	2:59	2:29	1:59
Note: Other values (OCA between 200 and 700 FT) requiring non-standard MA-climb gradients and a limited turn radius are available on special request!						FPM	320	425	530	635	795
CIRCLING		SEE LOWW VIS-CHART									

Note 1: Accelerate NOT before turn is completed and NOT below 2500 FT MSL.
Note 2: Observe the required max radius of turn, the resulting speed limits and MNM bank angle!

PROCEDURE AND MINIMA REQUIRE AUTHORIZATION BY ATC!

CHANGES: REMOVAL MM; EDITORIAL.