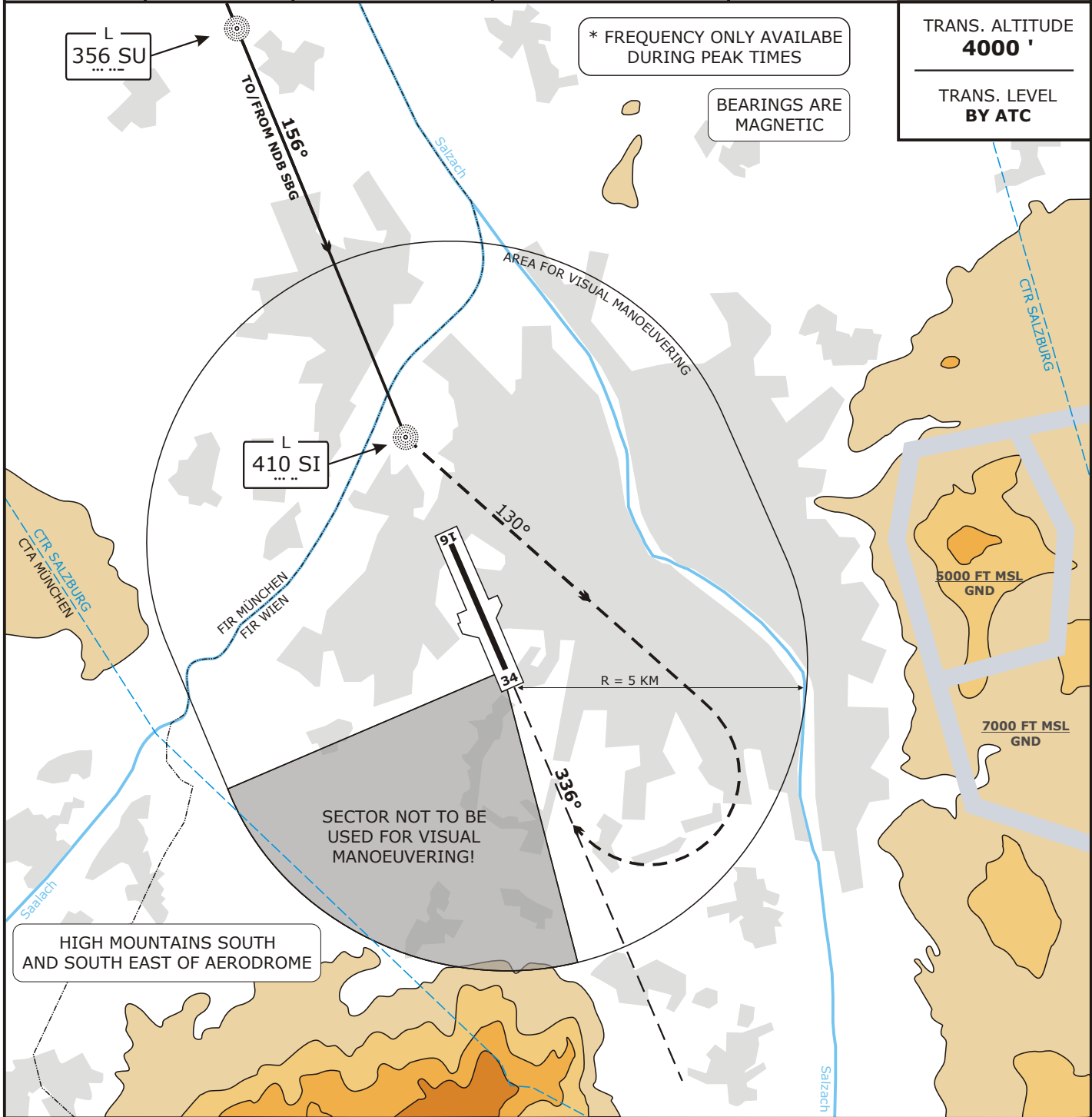


LOWS SALZBURG

Valid for flight simulation use only - do not use for real life navigation

ATIS 125.720	TOWER 118.100	SALZBURG RADAR 123.720	SALZBURG DIRECTOR 134.970	WIEN RADAR 134.350 / 129.200* / 131.350*
-----------------	------------------	---------------------------	------------------------------	---



OCA (FT) CIRCLING		
A/C CATEGORY		MNM REQUIRED FLIGHT VISIBILITY
A	2450	2,8 KM
B		
C	2550	3,7 KM
D		4,6 KM

**CIRCLING PROCEDURE RWY 34:**  
Complete a published instrument approach to RWY 16; After passing L SI proceed VISUALLY approximately on track 130° 3.5 NM followed by right turn for positioning on to final RWY 34.

**BALKED LANDING DURING CIRCLING:**  
If landing becomes impossible after passing SI (e.g. abeam THR 34), turn right to SU, avoid overshooting QDR 156° of SI and continue to NDB/VOR SBG, climb to FL 60.

CHANGES: NEW CHART.