

SID

vacc

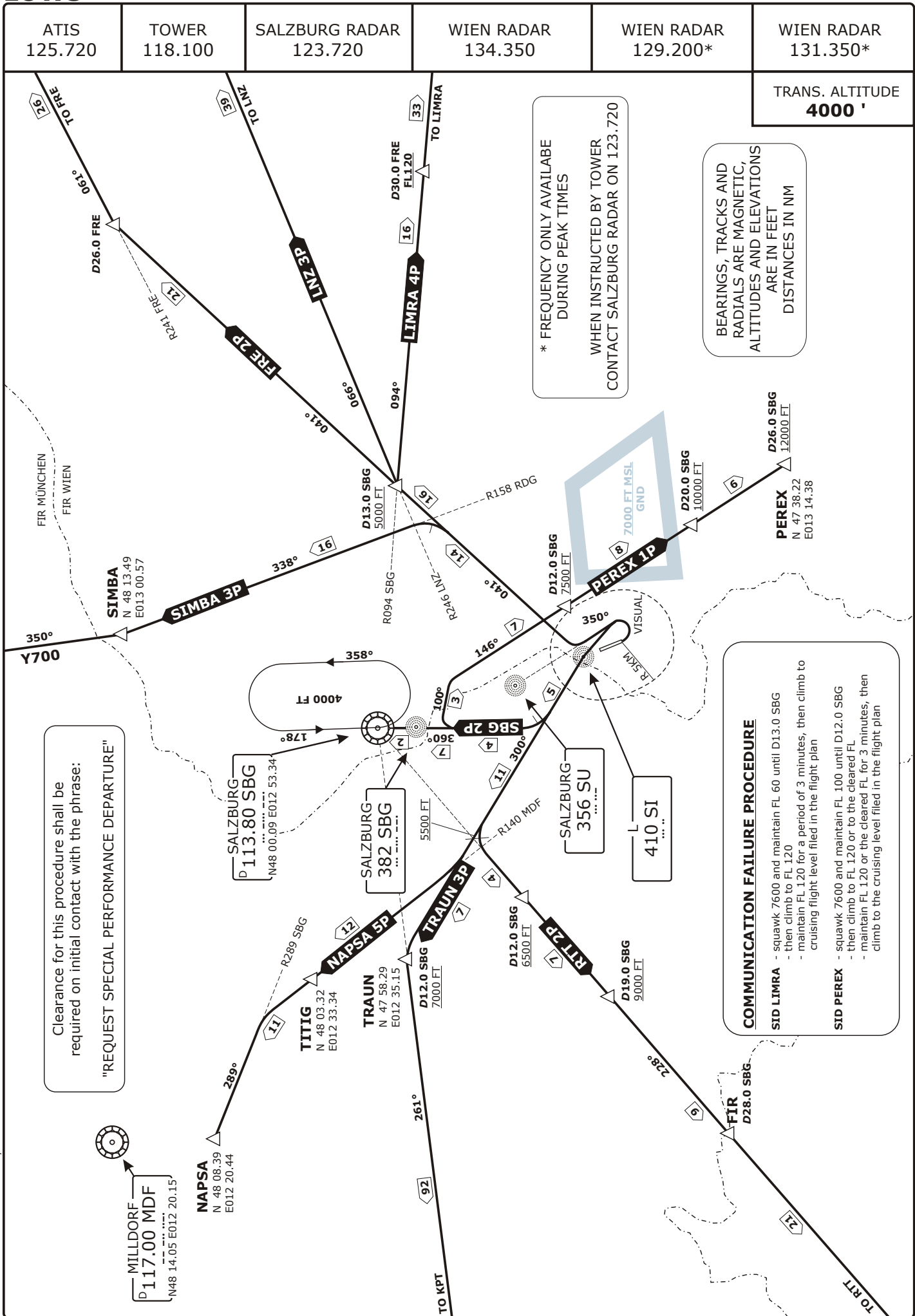
AUSTRIA

SALZBURG, AUSTRIA

LOWS SALZBURG

SPECIAL PERFORMANCE DEPARTURE ROUTES RWY 16

Valid for flight simulation use only - do not use for real life navigation



CHANGES: NEW SID PEREX 1P, EDITORIAL

Valid for flight simulation use only - do not use for real life navigation

These SIDs contain a NON-ICAO-STANDARD segment. A special authorization by ATC is required.
Only operators of multi-engine aircraft shall apply for such a permission.

Clearance for this procedure shall be requested on initial contact with the phrase: "**Request special performance departure.**"

Meteorological minima for departing aircraft: RVR 300 M

Calculation of the SID's is based on all - engines operative minimum climb gradient during **initial straight part** of 10% (607 FT/NM), and for **initial turn** 6% (365 FT/NM).

MIN bank angle for actual IAS: 126 KT: min bank 15°; 147 KT: min bank 20°; 165 KT: min bank 25° - thereafter MAX IAS 250 KT up to FL 100.

Where a greater climb gradient for a specific SID (or part of a SID) is necessary this is indicated in the description of the route.

DESIGNATOR	ROUTE	CLIMB TO... INITIALLY	REMARKS
LIMRA 4P LIMRA FOUR PAPA	Climb straight ahead at D2.0 OES LEFT TURN to L SU, intercept SI QDR 041° to intercept SBG R094 to LIMRA.	FL 60	Climb gradient 4.5% (271 FT/NM) Cross abeam L SI 2800 FT or above. Cross SBG D13.0 5000 FT or above. Cross SBG D30.0 FL 120 or above. If unable to comply with use LNZ 3P.
LNZ 3P LINZ THREE PAPA	Climb straight ahead at D2.0 OES LEFT TURN to L SU, intercept SI QDR 041° to intercept LNZ R246 to LNZ.	FL 60	Cross abeam L SI 2800 FT or above. Cross SBG D13.0 5000 FT or above.
NAPSA 5P NAPSA FIVE PAPA	Climb straight ahead at D2.0 OES LEFT TURN to L SI, intercept SI QDR 300°, intercept MDF R140°, via TITIG (L173) intercept SBG R289 to NAPSA.	FL 60	Cross L SI 2200 FT or above.
PEREX 1P PEREX ONE PAPA	Climb straight ahead at D2.0 OES LEFT TURN to L SI, intercept SI QDR 300° to intercept SBG R180°, at D4.0 SBG RIGHT TURN Heading 100, to intercept L173 to PEREX.	FL 100	Cross L SI 2800 FT or above. Cross SBG D4.0 4500 FT or above. Cross SBG D12.0 7500 FT or above. Cross SBG D20.0 10000 FT or above Cross PEREX 12000 FT or above If unable to comply with use SBG 2P
RTT2P RATTENBERG TWO PAPA	Climb straight ahead at D2.0 OES LEFT TURN to L SI, intercept SI QDR 300 to intercept SBG R228 to RTT.	FL 100	Cross L SI 2800 FL or above. Intercept R228° SBG 5500 FT or above Cross SBG D12.0 6500 FT or above Cross SBG D19.0 9000 FT or above If unable to comply with use SBG 2P
SBG 2P SALZBURG TWO PAPA	Climb straight ahead at D2.0 OES LEFT TURN to L SI, intercept SI QDR 300° to intercept SBG R180 to SBG.	FL 60	Cross abeam L SI 2800 FT or above. If necessary climb in the holding SBG to MFA.
TRAUN 3P TRAUN THREE PAPA	Climb straight ahead at D2.0 OES LEFT TURN to L SI, intercept SI QDR 300° and join L856 to KPT	FL 80	Cross L SI 2800 FT or above. Intercept SBG R228 5500 FT or above Cross SBG D12.0 7000 FT or above. If unable to comply with use SBG 2P.
SIMBA 3P SIMBA THREE PAPA	Climb straight ahead at D2.0 OES LEFT TURN to L SU, intercept SI QDR 041° to intercept RDG R158 to SIMBA.	FL 60	Cross abeam L SI 2800 FT or above.
FRE 2P FREISTADT TWO PAPA	Climb straight ahead at D2.0 OES LEFT TURN to L SU, intercept SI QDR 041° to intercept FRE R241° to FRE.	FL 60	Cross abeam L SI 2800 FT or above. Cross SBG D13.0 5000 FT or above.