

Courtesy of Austro Control GmbH

**INSTRUMENT
APPROACH CHART - ICAO**

VAR 4° E

AD ELEV 2206 FT
THR 13 ELEV 2183 FT
THR 31 ELEV 2206 FT
HGT RELATED TO AD ELEV

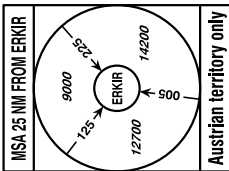
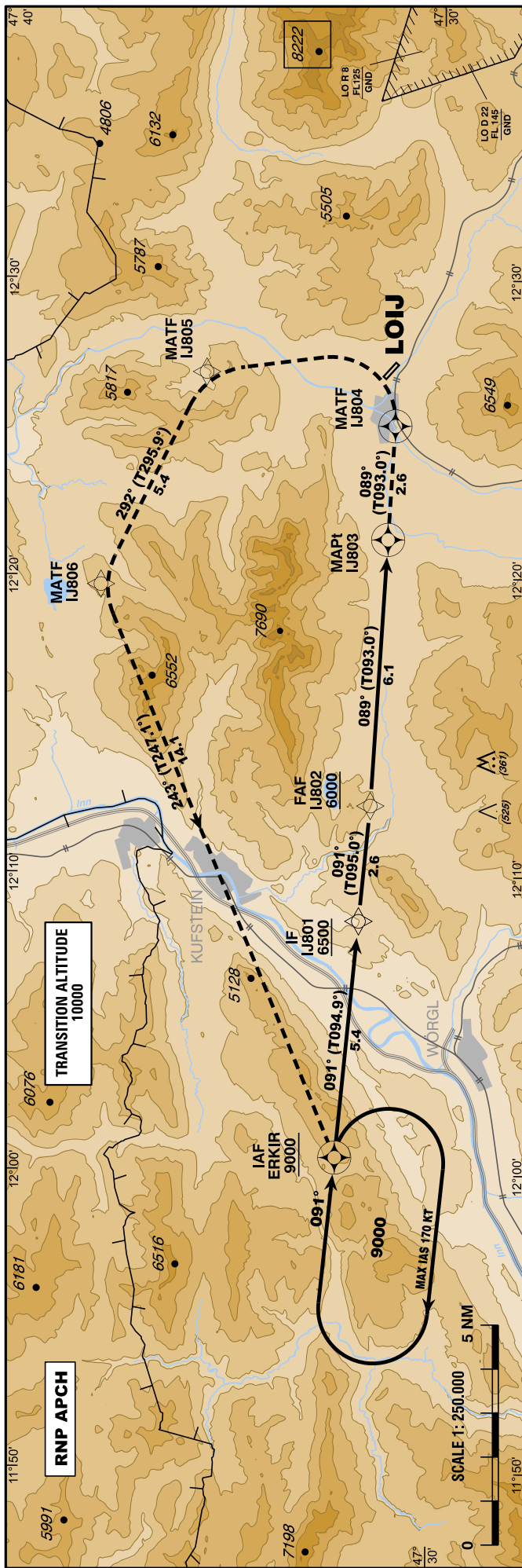
Radar 128.975Mhz
Radio 120.355Mhz

ST. JOHANN / TIROL (LOIJ)

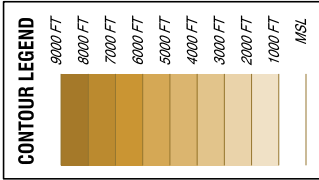
ÖSTERREICH AUSTRIA

RNP A
CAT A / B

CHANGE: AD ELEV; THR 31 ELEV; MDH; EDITORIAL



BEARINGS AND TRACKS
ARE MAGNETIC
TRACKS IN BRACKETS
ARE TRUE
ALTITUDES, ELEVATIONS
AND HEIGHTS ARE IN FEET
DISTANCES ARE IN NM

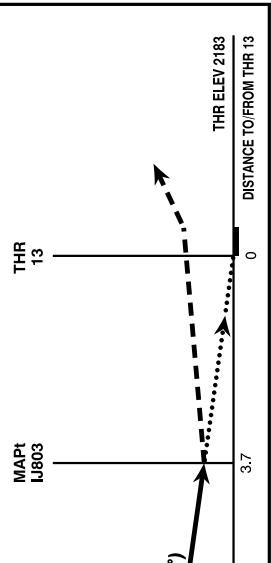


PIC shall be well familiar with RNP procedures
In general and is required to check the published
mandatory pre-flight briefing! For detailed information
see procedure related AIC.

PIC shall be well familiar with the terrain
in the area of "St. Johann/Tirol".

Visual approaches or visual circling NOT possible.

Approach shall be executed under own navigation after the IAF
- NO RADAR SERVICE below 9000 FT AMSL



MISSED APPROACH: CLIMB ON TRACK 089° TO IJ804, THEN TURN LEFT DIRECT TO IJ805 AND FOLLOW THE RNAV MA TRACK TO ERKIR. CLIMB TO 9000 FT AMSL AND HOLD.

IJ802 to IJ803 - DISTANCE 6.1 NM
(Timing not authorized for defining the MAP)

GS (KT)	80	100	120	140
IJ802 - IJ803	4:33	3:38	3:02	2:36
Rate of descent (4.9%)	FT / MIN	400	500	600
DIST ¹ in NM to IJ803	6	5	4	3
ALT (HEIGHT)	5980 (3774)	5680 (3474)	5380 (3174)	5080 (2874)
				4780 (2574)

MDA (MDH) IN FT	MA Climb Gradient	A	B	QNH LOWI required
		5460 (3254)	4620 (2414)	
LNAV		4180 (1974)		
VFR-PART: SEE CHART FOR VFR-FLIGHTS (LOIJ AD 2 MAP 14-2)				

Instrument Approach Procedure Coding Table St. Johann/Tirol RNP A											
Path Terminator	Waypoint				Course/Track ° MAG (° True)	DIST NM	Turn Direction	Constraints		Navigation Specification	Remarks
	Identifier	Type	Flyover	Coordinates				Level	Speed		
IF	ERKIR	IAF	no	N473216.00 E0120032.00				A9000+		RNP APCH	
TF	IJ801	IF	no	N473148.29 E0120828.40	091° (094.9°)	5.4		A6500+		RNP APCH	
TF	IJ802	FAF	no	N473134.44 E0121220.91	091° (095.0°)	2.6		A6000+		RNP APCH	
TF	IJ803	MAPt	yes	N473114.98 E0122117.05	089° (093.0°)	6.1				RNP APCH	
TF	IJ804	MATF	yes	N473106.79 E0122505.80	089° (093.0°)	2.6				RNP APCH	
DF	IJ805	MATF	no	N473524.77 E0122652.01			left			RNP APCH	
TF	IJ806	MATF	no	N473746.02 E0121941.76	292° (295.9°)	5.4	left			RNP APCH	
TF	ERKIR	MAHF	yes	N473216.00 E0120032.00	243° (247.1°)	14.1	left	A9000+		RNP APCH	
RNAV Holding											
Holding Point	Inbound Track ° True	Inbound Track ° MAG	Turn Direction	MAX IAS	Minimum Holding Altitude FT MSL / FL	Time	DIST NM	Remarks			
ERKIR	094.9°	091°	right	K170-	A9000	1 MIN					
THR Coordinates											
RWY 13	N473121.06 E0122644.58										
RWY 31	N473105.70 E0122710.02										

For Flight Simulation and non commercial use only!
Courtesy of Austro Control GmbH

