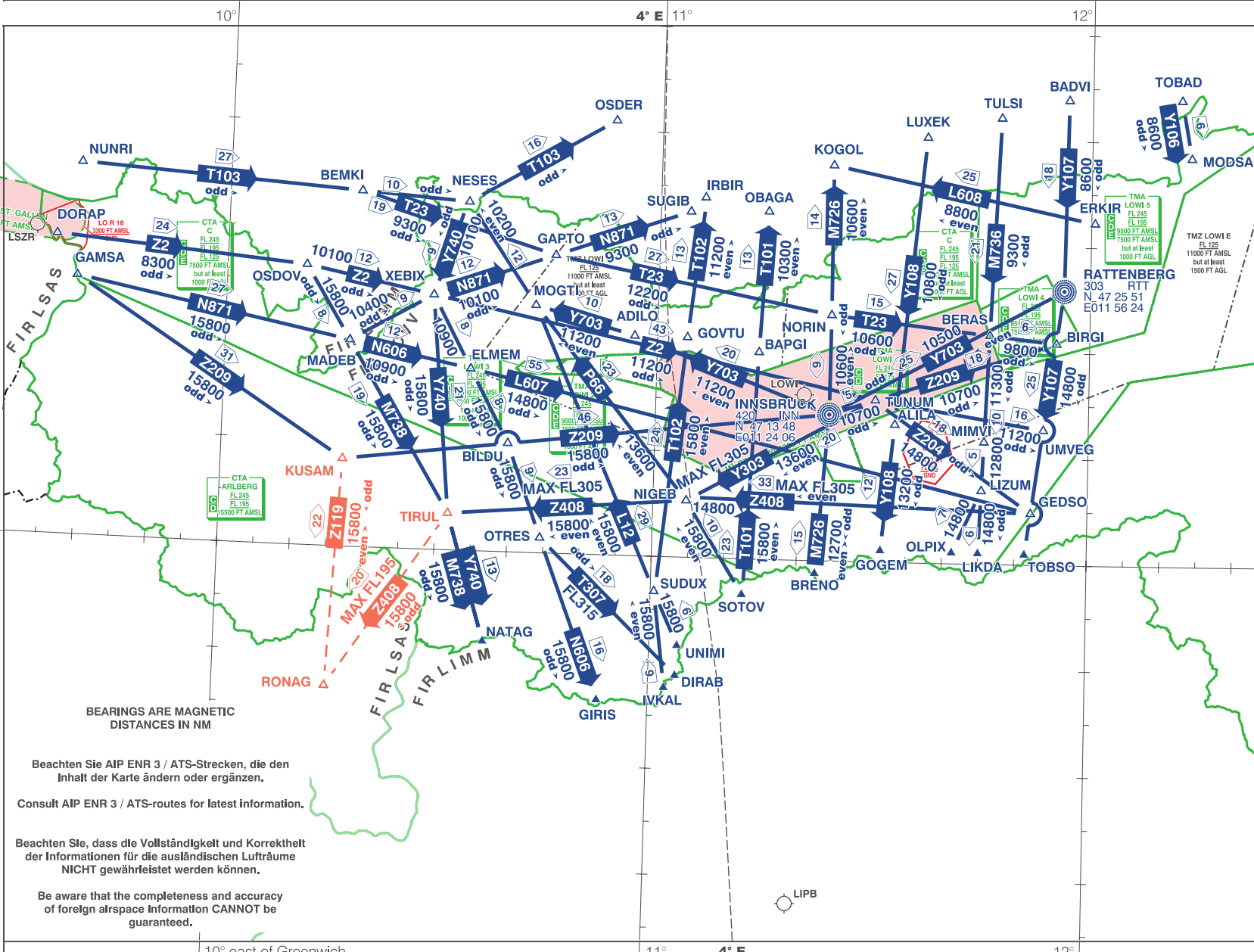
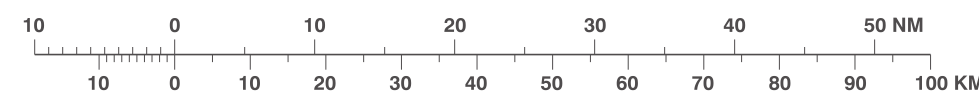


For Flight Simulation and non commercial use only!
Courtesy of Austro Control GmbH

SIGNIFICANT POINTS			
ADLO	N47 20 44.93	E010 56 51.55	
ALLA	N47 12 59.21	E011 33 13.19	
BADVI	N47 43 51.91	E011 56 43.37	
BAPGI	N47 19 31.48	E011 14 10.26	
BENKI	N47 33 33.80	E010 18 20.14	
BERAS	N47 21 53.72	E010 46 10.47	
BILDU	N47 10 13.60	E010 39 42.41	
BIRGI	N47 20 52.00	E011 55 26.00	
BRENO	N46 58 48.00	E011 22 36.00	
DIRAB	N46 48 43.38	E011 03 44.24	
DORAP	N47 28 21.85	E009 36 03.50	
ELMEM	N47 17 08.28	E010 34 14.66	
ERKR	N47 32 16.00	E012 00 32.00	
GAMSA	N47 24 30.43	E009 39 06.86	
GAPTO	N47 28 06.90	E010 45 33.95	
GEDSO	N47 04 50.00	E011 52 13.00	
GRIS	N46 46 18.41	E010 53 02.84	
GOGEM	N47 01 05.79	E011 31 34.86	
GOVTU	N47 20 44.05	E011 04 10.83	
IRBIR	N47 33 59.09	E011 06 12.85	
IVKAL	N46 47 39.00	E011 02 14.58	
KOGOL	N47 37 20.16	E011 23 59.46	
KUSAM	N47 08 14.00	E010 16 55.00	
LKDA	N47 01 00.90	E011 45 03.03	
LIZUM	N47 06 54.25	E011 45 21.73	
LUXEK	N47 40 08.71	E011 37 00.80	
MADEB	N47 19 27.75	E010 17 13.99	
MINVA	N47 11 30.12	E011 45 39.97	
MODSA	N47 38 30.00	E012 13 56.00	
MOGTI	N47 23 20.33	E010 43 00.61	
NATAQ	N46 51 28.77	E010 37 07.50	
NESES	N47 32 52.56	E010 33 16.96	
NIGEB	N47 05 20.90	E011 04 36.75	
NORIN	N47 23 11.77	E011 24 08.27	
NUNRI	N47 35 12.00	E009 39 09.00	
OBAGA	N47 32 48.52	E011 15 04.51	
OLPIX	N47 01 02.00	E011 41 25.00	
OSDER	N47 41 00.00	E010 53 30.00	
OSDOV	N47 26 24.49	E010 10 59.94	
OTRES	N47 01 24.49	E010 44 32.53	
RONAG	N46 46 45.89	E010 15 32.44	
SOTOV	N46 56 37.91	E011 12 37.56	
SUDUX	N46 56 42.05	E011 00 31.25	
SUGIB	N47 32 37.00	E011 04 13.00	
TIRUL	N47 03 25.83	E010 31 43.35	
TOBAD	N47 43 57.77	E012 12 29.51	
TOBSO	N47 00 58.02	E011 51 27.35	
TULSI	N47 42 05.79	E011 47 19.53	
TUNUM	N47 15 14.65	E011 30 27.33	
UMVEG	N47 12 41.83	E011 53 47.66	
UNIMI	N46 51 38.79	E011 03 54.68	
XEBIX	N47 24 00.04	E010 28 47.55	



AERODROMES	RADIO NAVIGATION AIDS	ATS ROUTES	AIR TRAFFIC SERVICES	
<ul style="list-style-type: none">Airport for international commercial air transportAirport for international commercial air transport with military flight operationMilitary aerodrome	<ul style="list-style-type: none">VORVOR/DMEVORTACNDB	<ul style="list-style-type: none">Distance between significant pointsRoute designatorMagnetic track / reverse magnetic trackFL seriesMinimum enroute altitude (MEA)	<ul style="list-style-type: none">State boundaryFlight Information region (FIR)Lower controlled airspaceControl zone (CTR)Transponder mandatory zone (TMZ)Radio mandatory zone (RMZ)	<ul style="list-style-type: none">Aerodrome traffic zone (civil - military)Restricted areaDanger area
REPORTING POINTS <ul style="list-style-type: none">Compulsory reporting pointReporting point on request	ATS ROUTES <ul style="list-style-type: none">RNAV routeCDR	<ul style="list-style-type: none">Normally one-way route and VOR change-over point giving distance	MISCELLANEOUS <ul style="list-style-type: none">Isogonal (date 2024)	



vacc
AUSTRIA