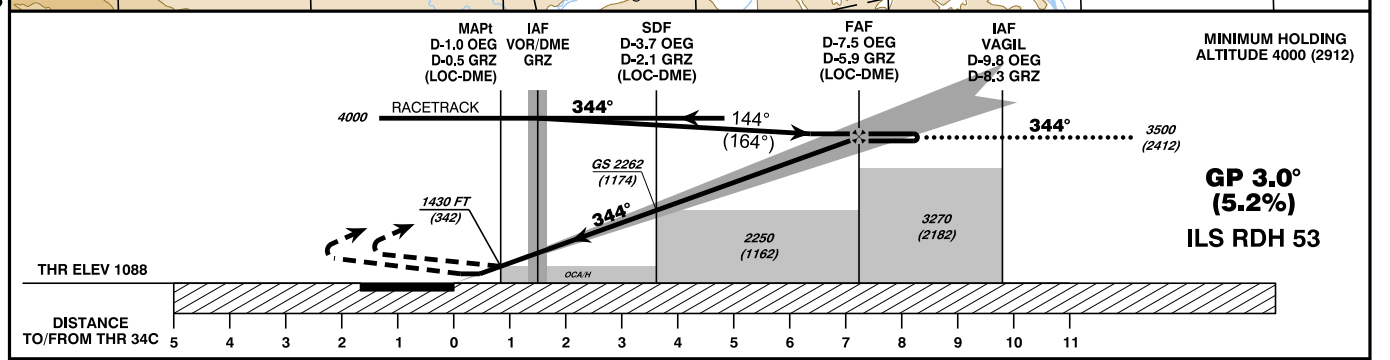
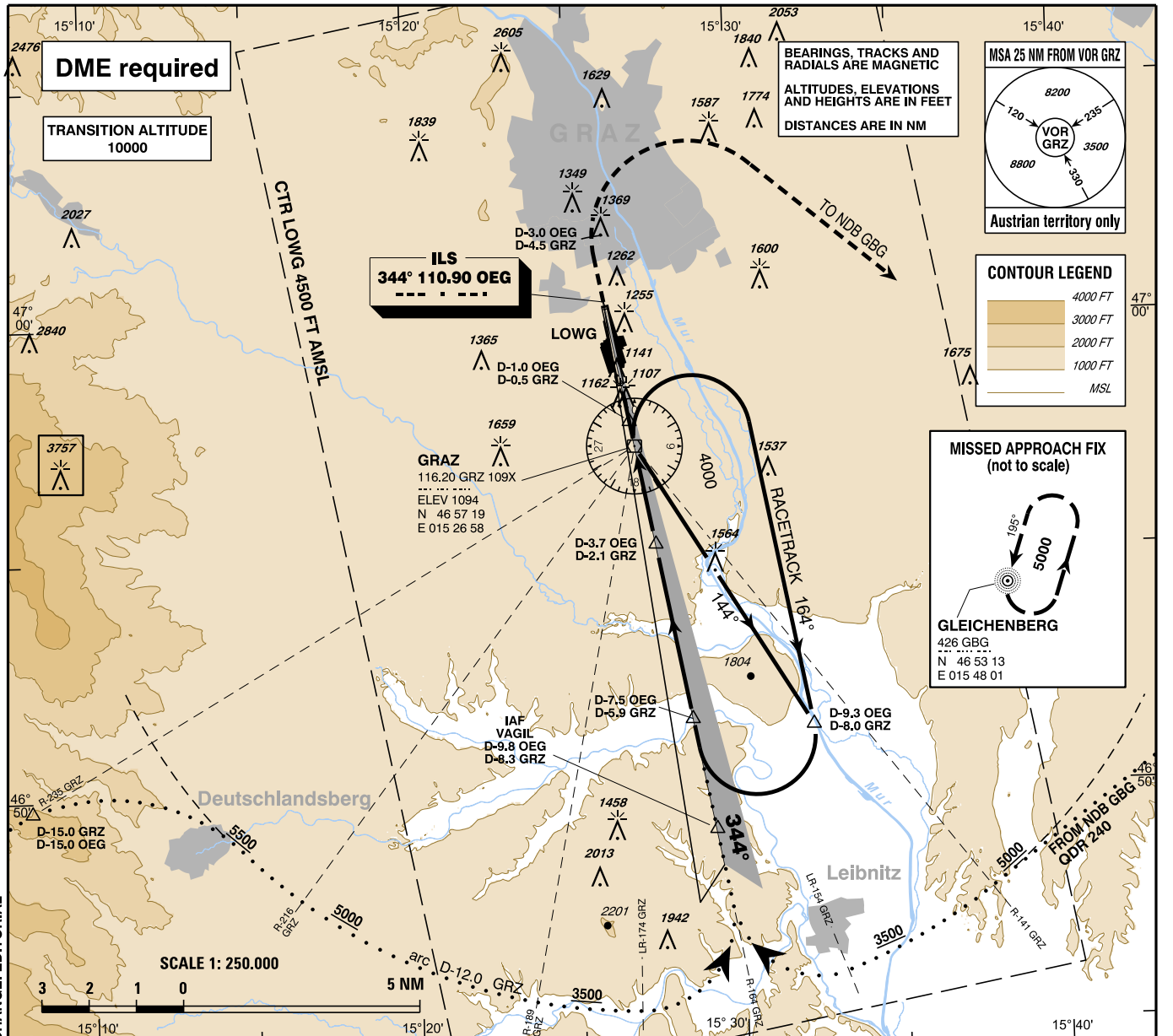


For Flight Simulation and non commercial use only !

Courtesy of Austro Control GmbH

CHANGE: EDITORIAL

INSTRUMENT APPROACH CHART - ICAO **AD ELEV 1120 FT** **THR 34C ELEV 1088 FT** **Radar 119.300Mhz** **G R A Z (LOWG)**
VAR 5° E **HGT RELATED TO THR ELEV** **CIRCLING HGT RELATED TO AD ELEV** **Tower 118.200Mhz** **ÖSTERREICH AUSTRIA**
ILS CAT II & III or LOC RWY 34C **Atis 126.130Mhz**



MISSED APPROACH : CLIMB STRAIGHT AHEAD, AT D-3.0 OEG TURN RIGHT DIRECT TO NDB GBG; CLIMB TO 5000 FT AMSL AND HOLD.
 Note : Missed Approach Turn limited to MAX IAS 210 KT.

OCA (OCH) IN FT		A	B	C	D / D _L
STRAIGHT-IN APPROACH	CAT I Press. Altim.	1272 (184)	1284 (196)	1292 (204)	1303 (215)
	CAT II RDO Altim.	1183 (95)	1201 (113)	1212 (124)	1227 (139)
	CAT III	A P P R O V E D			
	LOC-DME	1430 (342)			
CIRCLING EAST OF AD ONLY !		1670 (550)	1670 (550)	2070 (950)	2370 (1250)

D-3.7 OEG to THR 34C - DISTANCE 3.5 NM						
(Timing not authorized for defining the MAPt)						
GS (KT)	80	100	120	140	160	180
MIN : SEC	2:37	2:06	1:45	1:30	1:19	1:10
FT / MIN	420	530	640	740	850	960

DME OEG	7	6	5	4	3	2
DIST THR	6.8	5.8	4.8	3.8	2.8	1.8
ALT (HEIGHT)	3310 (2222)	2990 (1902)	2670 (1582)	2350 (1262)	2030 (942)	1710 (622)

vacc AUSTRIA