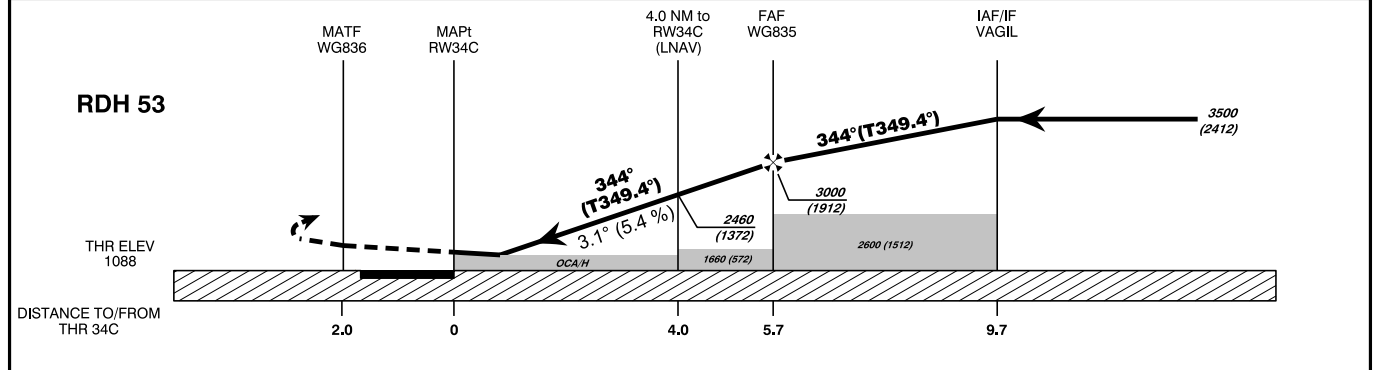
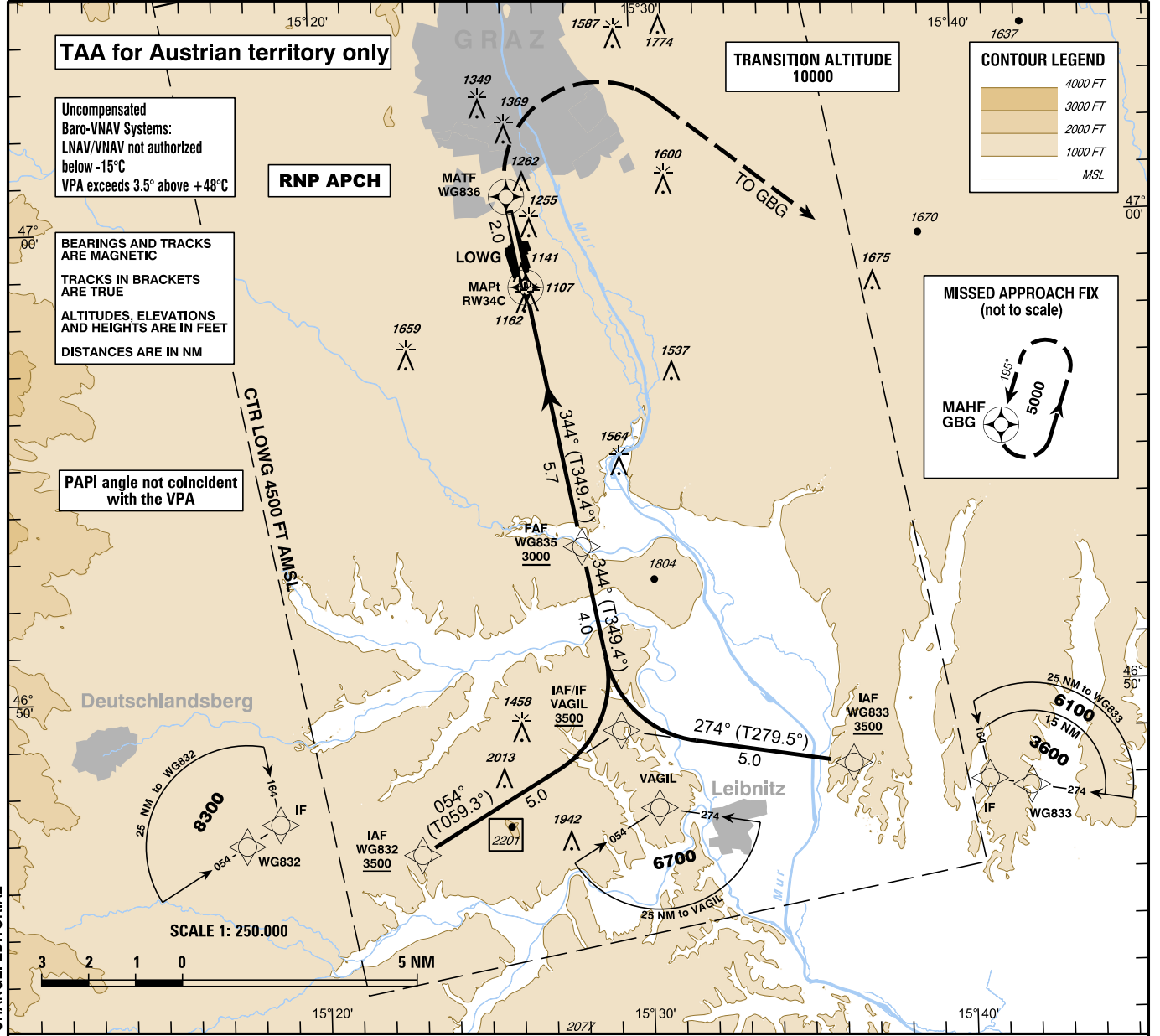


For Flight Simulation and non commercial use only !

Courtesy of Austro Control GmbH

INSTRUMENT APPROACH CHART - ICAO **VAR 5° E** **AD ELEV 1120 FT**
THR 34C ELEV 1088 FT **Radar 119.300Mhz** **Tower 118.200Mhz** **EGNOS CH 72310 E34A**
HGT RELATED TO THR ELEV **Atis 126.130Mhz** **G R A Z (LOWG)**
CIRCLING HGT RELATED TO AD ELEV **ÖSTERREICH AUSTRIA** **RNP RWY 34C**



MISSED APPROACH: CLIMB STRAIGHT AHEAD TO WG836, THEN TURN RIGHT DIRECT TO GBG; CLIMB TO 5000 FT AMSL AND HOLD.

	OCA (OCH)	MA CLIMB GRADIENT	A B C D / D _L			
			A	B	C	D / D _L
STRAIGHT-IN APPROACH	LNAV	2.5 %	1470 (382)			
		4.0 %	1480 (392)	1492 (404)	1511 (423)	1538 (450)
	LNAV/VNAV	2.5 %	1332 (244)	1345 (257)	1353 (265)	1378 (290)
		4.0 %	1304 (216)	1317 (229)	1325 (237)	1335 (247)
LPV	2.5 %	1271 (183)	1284 (196)	1292 (204)	1302 (214)	
	4.0 %	1271 (183)	1284 (196)	1292 (204)	1302 (214)	
CIRCLING EAST OF AD ONLY !			1670 (550)	1670 (550)	2070 (950)	2370 (1250)

WG835 to RW34C - DISTANCE 5.7 NM (Timing not authorized for defining the MAPt)							
	GS (KT)	80	100	120	140	160	180
WG835 - RW34C	MIN : SEC	4:15	3:24	2:50	2:25	2:07	1:53
Rate of descent (5.4%)	FT / MIN	440	550	660	770	880	990
DIST in NM to RW34C		5	4	3	2		
ALTITUDE (HEIGHT)		2790 (1702)	2460 (1372)	2130 (1042)	1800 (712)		

vacc AUSTRIA

Instrument Approach Procedure Coding Table Graz RNP RWY 34C

Path Terminator	Waypoint				Course/ Track ° MAG (° True)	DIST NM	Turn Direction	Constraints		Navigation Specification	Remarks
	Identifier	Type	Flyover	Coordinates				Level	Speed		
IF	WG832	IAF	no	N464637.77 E0152256.29				A3500+	K200-	RNP APCH	
IF	WG833	IAF	no	N464821.71 E0153622.98				A3500+	K200-	RNP APCH	
IF / TF	VAGIL	IAF / IF	no	N464910.78 E0152911.98	054° (059.3°) 274° (279.5°)	5.0		A3500+		RNP APCH	
TF	WG835	FAF	no	N465306.61 E0152807.39	344° (349.4°)	4.0	left right	A3000+		RNP APCH	
TF	RW34C	MAPt	yes	N465840.03 E0152635.81	344° (349.4°)	5.7				RNP APCH	VPA (°) / TCH (ft): -3.1 / 53
TF	WG836	MATF	yes	N470036.46 E0152603.77	344° (349.4°)	2.0				RNP APCH	
DF	GBG	MAHF	yes	N465313.16 E0154801.15			right	A5000+		RNP APCH	
HM	GBG	MAHF	yes	N465313.16 E0154801.15	195° (200.3°)		left	A5000+		RNP APCH	
RNAV Holding											
Holding Point	Inbound Track ° True	Inbound Track ° MAG	Turn Direction	MAX IAS	Minimum Holding Altitude FT MSL / FL	Time	DIST NM	Remarks			
GBG	200.3°	195°	left		A5000	1 MIN					

**SBAS FAS Data Block Coding Table
Graz RNP RWY 34C**

Input data

Operation Type	0
SBAS Provider	1 (EGNOS)
Airport Identifier	LOWG
Runway	34
Runway Letter	2 (Centre)
Approach Performance Designator	0
Route Indicator	
Reference Path Data Selector	0
Reference Path Identifier	E34A
LTP/FTP Latitude	465840.0300N
LTP/FTP Longitude	0152635.8100E
LTP/FTP Ellipsoidal Height (metres)	379.0
FPAP Latitude	470015.4965N
Delta FPAP Latitude (seconds)	95.4665
FPAP Longitude	0152609.5465E
Delta FPAP Longitude (seconds)	-26.2635
Threshold Crossing Height	53.0
TCH Units Selector	0 (feet)
Glidepath Angle (degrees)	3.10
Course Width (metres)	113.00
Length Offset (metres)	0
HAL (metres)	40.0
VAL (metres)	35.0

Output data

Data Block	10 07 17 0F 0C A2 00 00 01 34 33 05 3C 22 29 14 44 A6 A0 06 CE 22 D5 E9 02 D1 32 FF 12 02 36 01 84 00 C8 AF 40 1E B3 55
Calculated CRC Value	401EB355

Required Additional data

ICAO Code	LO
LTP/FTP Orthometric Height (metres)	332.0