

For Flight Simulation and non commercial use only !

Courtesy of Austro Control GmbH

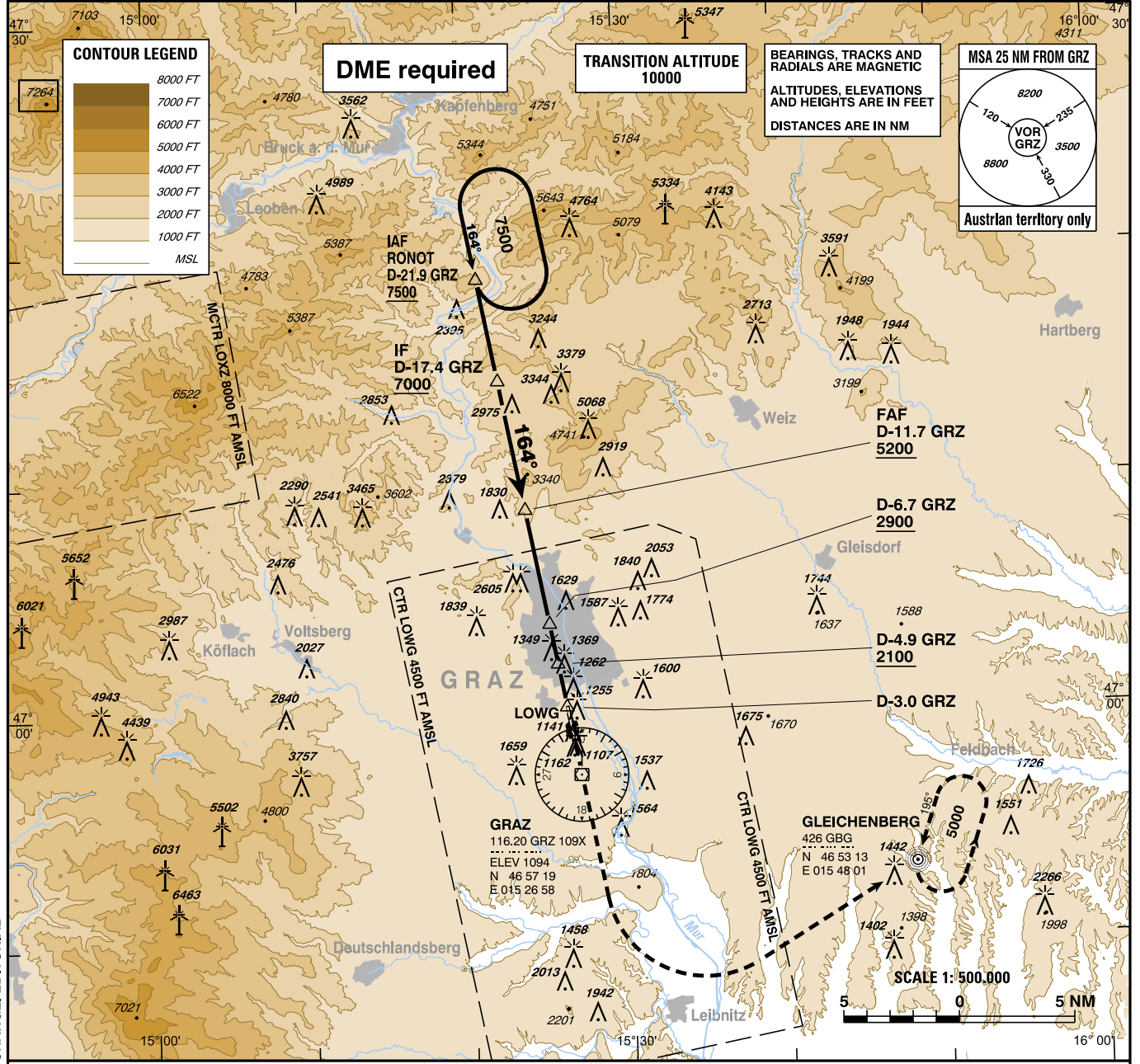
**INSTRUMENT APPROACH CHART - ICAO**

VAR 5° E

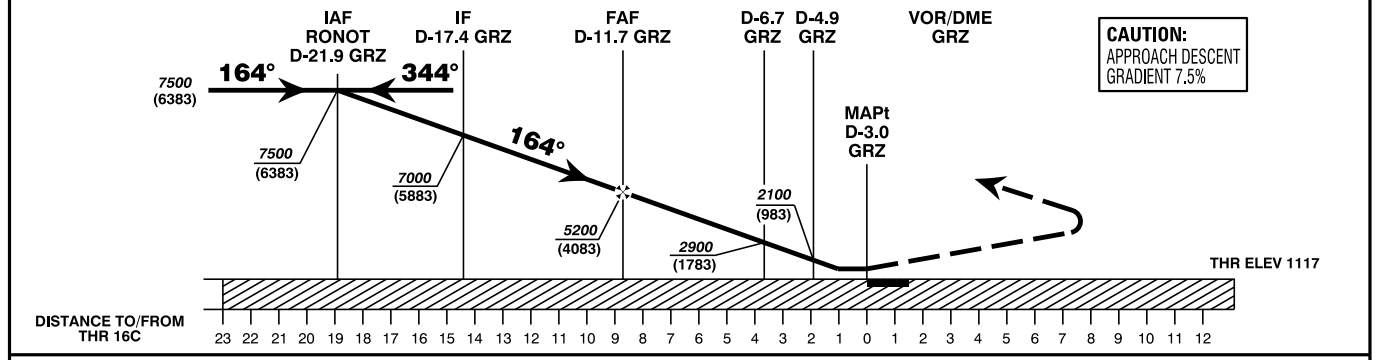
AD ELEV 1120 FT  
THR 16C ELEV 1117 FT  
HGT RELATED TO THR ELEV

Radar	119.300Mhz
Tower	118.200Mhz
Atis	126.130Mhz

**G R A Z (LOWG)**  
ÖSTERREICH AUSTRIA  
VOR RWY 16C



CHANGE: EDITORIAL



**MISSED APPROACH : CLIMB STRAIGHT AHEAD, WHEN PASSING 2500 FT AMSL TURN LEFT TO NDB GBG, CONTINUE CLIMB TO 5000 FT AMSL AND HOLD.**

OCA (OCH) IN FT		A	B	C	D	D-11.7 GRZ to MAPt - DISTANCE 8.7 NM (Timing not authorized for defining the MAPt)							
STRAIGHT-IN APPROACH	VOR/DME	1780 (660)				GS (KT)	80	100	120	140	160	180	
						D-11.7 GRZ - MAPt	MIN : SEC	6:32	5:13	4:21	3:44	3:16	2:54
CIRCLING EAST OF AD ONLY !	FT MSL	1780 (653)	1780 (653)	2080 (963)	2400 (1283)	Rate of descent (7.5%)	FT / MIN	610	760	910	1060	1220	1370

vacc AUSTRIA