

For Flight Simulation and non commercial use only!

Courtesy of Austro Control GmbH

vacc
AUSTRIA

STANDARD ARRIVAL CHART - INSTRUMENT (STAR) - ICAO

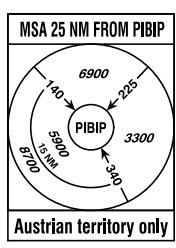
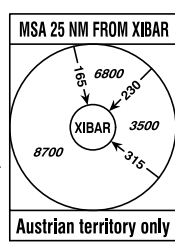
VAR 5° E

GRAZ (LOWG)
ÖSTERREICH AUSTRIA

Radar 119.300Mhz
Tower 118.200Mhz
Atis 126.130Mhz

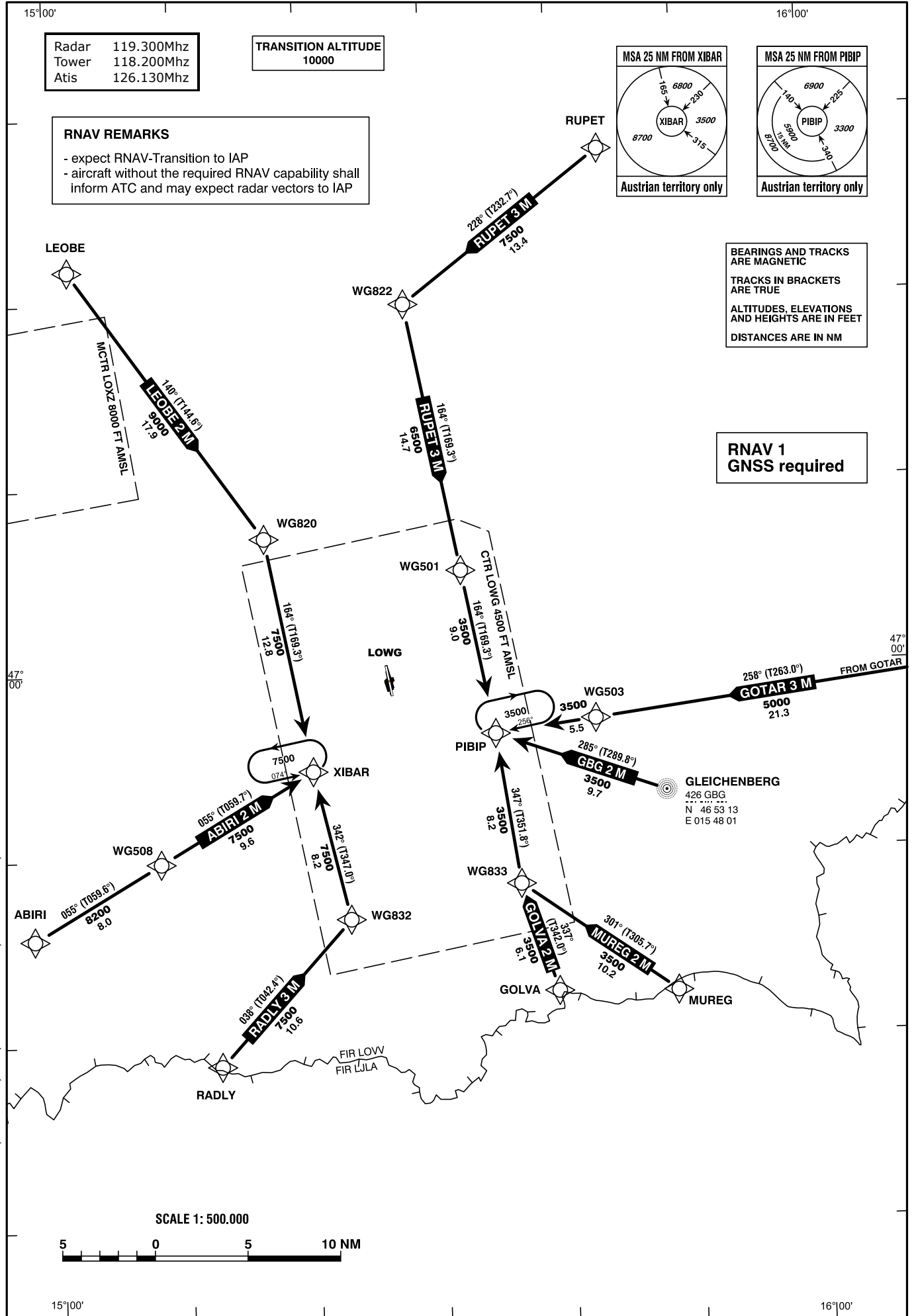
TRANSITION ALTITUDE
10000

RNAV REMARKS
- expect RNAV-Transition to IAP
- aircraft without the required RNAV capability shall inform ATC and may expect radar vectors to IAP

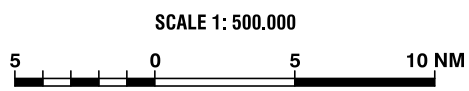


BEARINGS AND TRACKS ARE MAGNETIC
TRACKS IN BRACKETS ARE TRUE
ALTITUDES, ELEVATIONS AND HEIGHTS ARE IN FEET
DISTANCES ARE IN NM

RNAV 1
GNSS required



CHANGE: STAR ABIRI ADAPTED; NAV SPEC; MSA; WG821 REMOVED; WG820 ADDED; EDITORIAL



Designator	Route						Remarks			
ABIRI 2 M Abiri two mike arrival	ABIRI - WG508 - XIBAR									
RNAV STAR Coding Table of ABIRI 2 M										
Path Terminator	Waypoint			Course/ Track ° MAG (° True)	DIST NM	Turn Direction	Constraints		Navigation Specification	Remarks
	Identifier	Flyover	Coordinates				Crossing ALT	Speed		
IF	ABIRI	no	N464545.01 E0145803.26				A9000+		RNAV 1	
TF	WG508	no	N464947.76 E0150806.10	055° (059.6°)	8.0		A8200+		RNAV 1	
TF	XIBAR	no	N465438.72 E0152013.80	055° (059.7°)	9.6		A7500+		RNAV 1	

Designator	Route						Remarks			
GBG 2 M Gleichenberg two mike arrival	GBG - PIBIP									
RNAV STAR Coding Table of GBG 2 M										
Path Terminator	Waypoint			Course/ Track ° MAG (° True)	DIST NM	Turn Direction	Constraints		Navigation Specification	Remarks
	Identifier	Flyover	Coordinates				Crossing ALT	Speed		
IF	GBG	no	N465313.16 E0154801.15				A5000+		RNAV 1	
TF	PIBIP	no	N465629.54 E0153440.49	285° (289.8°)	9.7		A3500+		RNAV 1	

Designator	Route						Remarks			
GOLVA 2 M Golva two mike arrival	GOLVA - WG833 - PIBIP									
RNAV STAR Coding Table of GOLVA 2 M										
Path Terminator	Waypoint			Course/ Track ° MAG (° True)	DIST NM	Turn Direction	Constraints		Navigation Specification	Remarks
	Identifier	Flyover	Coordinates				Crossing ALT	Speed		
IF	GOLVA	no	N464231.57 E0153908.54				A6000+		RNAV 1	
TF	WG833	no	N464821.71 E0153622.98	337° (342.0°)	6.1		A3500+		RNAV 1	
TF	PIBIP	no	N465629.54 E0153440.49	347° (351.8°)	8.2	right	A3500+		RNAV 1	

Designator	Route	Remarks
GOTAR 3 M Gotar three mike arrival	GOTAR - WG503 - PIBIP	

RNAV STAR Coding Table of GOTAR 3 M

Path Terminator	Waypoint			Course/Track ° MAG (° True)	DIST NM	Turn Direction	Constraints		Navigation Specification	Remarks
	Identifier	Flyover	Coordinates				Crossing ALT	Speed		
IF	GOTAR	no	N465952.37 E0161329.15				A7000+		RNAV 1	
TF	WG503	no	N465711.96 E0154235.58	258° (263.0°)	21.3		A5000+		RNAV 1	
TF	PIBIP	no	N465629.54 E0153440.49	258° (262.6°)	5.5		A3500+		RNAV 1	

Designator	Route	Remarks
LEOBE 2 M Leobe two mike arrival	LEOBE - WG820 - XIBAR	

RNAV STAR Coding Table of LEOBE 2 M

Path Terminator	Waypoint			Course/Track ° MAG (° True)	DIST NM	Turn Direction	Constraints		Navigation Specification	Remarks
	Identifier	Flyover	Coordinates				Crossing ALT	Speed		
IF	LEOBE	no	N472149.28 E0150137.07				A9000+		RNAV 1	
TF	WG820	no	N470714.86 E0151645.13	140° (144.6°)	17.9		A9000+		RNAV 1	
TF	XIBAR	no	N465438.72 E0152013.80	164° (169.3°)	12.8	right	A7500+		RNAV 1	

Designator	Route	Remarks
MUREG 2 M Mureg two mike arrival	MUREG - WG833 - PIBIP	

RNAV STAR Coding Table of MUREG 2 M

Path Terminator	Waypoint			Course/Track ° MAG (° True)	DIST NM	Turn Direction	Constraints		Navigation Specification	Remarks
	Identifier	Flyover	Coordinates				Crossing ALT	Speed		
IF	MUREG	no	N464224.25 E0154828.98				A5000+		RNAV 1	
TF	WG833	no	N464821.71 E0153622.98	301° (305.7°)	10.2		A3500+		RNAV 1	
TF	PIBIP	no	N465629.54 E0153440.49	347° (351.8°)	8.2	right	A3500+		RNAV 1	

Designator	Route						Remarks			
RADLY 3 M Radly three mike arrival	RADLY - WG832 - XIBAR									
RNAV STAR Coding Table of RADLY 3 M										
Path Terminator	Waypoint			Course/ Track ° MAG (° True)	DIST NM	Turn Direction	Constraints		Navigation Specification	Remarks
	Identifier	Flyover	Coordinates				Crossing ALT	Speed		
IF	RADLY	no	N463848.69 E0151233.03				A8500+		RNAV 1	
TF	WG832	no	N464637.77 E0152256.29	038° (042.4°)	10.6		A7500+		RNAV 1	
TF	XIBAR	no	N465438.72 E0152013.80	342° (347.0°)	8.2	left	A7500+		RNAV 1	

Designator	Route						Remarks			
RUPET 3 M Rupet three mike arrival	RUPET - WG822 - WG501 - PIBIP									
RNAV STAR Coding Table of RUPET 3 M										
Path Terminator	Waypoint			Course/ Track ° MAG (° True)	DIST NM	Turn Direction	Constraints		Navigation Specification	Remarks
	Identifier	Flyover	Coordinates				Crossing ALT	Speed		
IF	RUPET	no	N472755.00 E0154357.00				A9000+		RNAV 1	
TF	WG822	no	N471945.66 E0152814.11	228° (232.7°)	13.4		A7500+		RNAV 1	
TF	WG501	no	N470520.13 E0153214.40	164° (169.3°)	14.7	left	A6500+		RNAV 1	
TF	PIBIP	no	N465629.54 E0153440.49	164° (169.3°)	9.0		A3500+		RNAV 1	

RNAV Holding								
Holding Point	Inbound Track ° True	Inbound Track ° MAG	Turn Direction	MAX IAS	Minimum Holding Altitude FT MSL / FL	Time	DIST NM	Remarks
PIBIP	261.3°	256°	right		A3500	1 MIN		
XIBAR	079.3°	074°	left	K200-	A7500	1 MIN		