

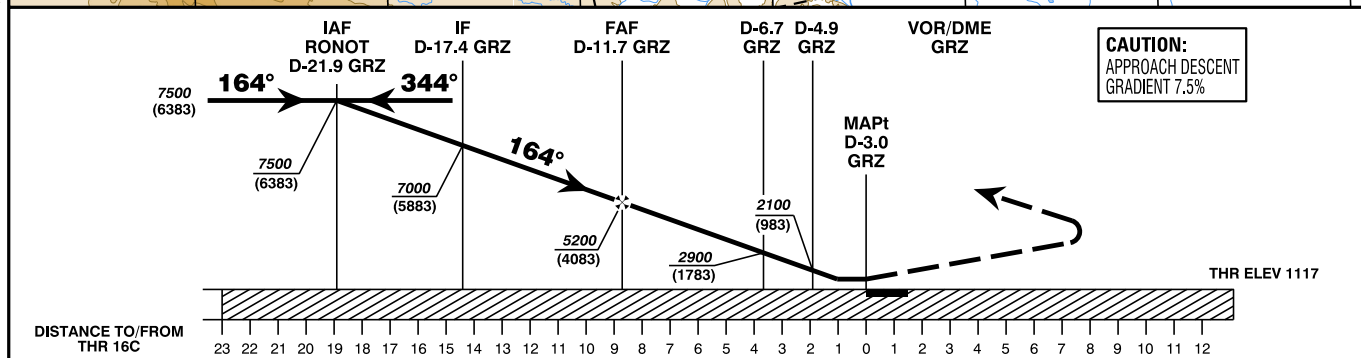
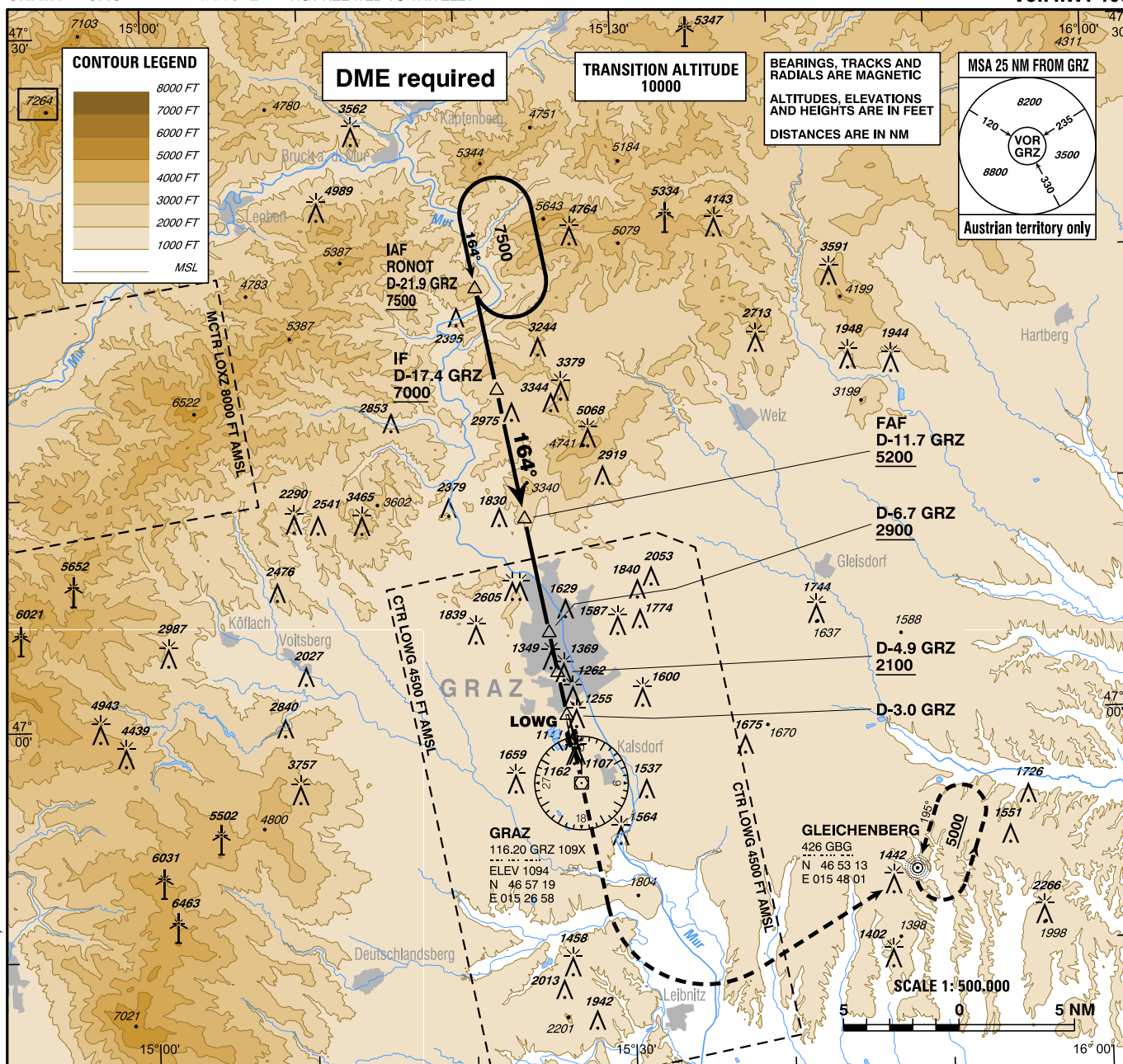
INSTRUMENT APPROACH CHART - ICAO

VAR 5° E

AD ELEV 1120 FT
THR 16C ELEV 1117 FT
HGT RELATED TO THR ELEV

Radar 119.300Mhz
Tower 118.200Mhz
Atis 126.130Mhz

G R A Z (LOWG)
ÖSTERREICH AUSTRIA
VOR RWY 16C



MISSED APPROACH : CLIMB STRAIGHT AHEAD, WHEN PASSING 2500 FT AMSL TURN LEFT TO NDB GBG, CONTINUE CLIMB TO 5000 FT AMSL AND HOLD.

OCA (OCH) IN FT		A	B	C	D	D-11.7 GRZ to MAPt - DISTANCE 8.7 NM (Timing not authorized for defining the MAPt)							
STRAIGHT-IN APPROACH	VOR/DME	1780 (660)					GS (KT)	80	100	120	140	160	180
						D-11.7 GRZ - MAPt	MIN : SEC	6:32	5:13	4:21	3:44	3:16	2:54
CIRCLING CIRCLING NOT AUTHORIZED WEST OF THE AD		1780 (660)	2070 (950)	2340 (1220)		Rate of descent (7.5%)	FT / MIN	610	760	910	1060	1220	1370