

Courtesy of Austro Control GmbH

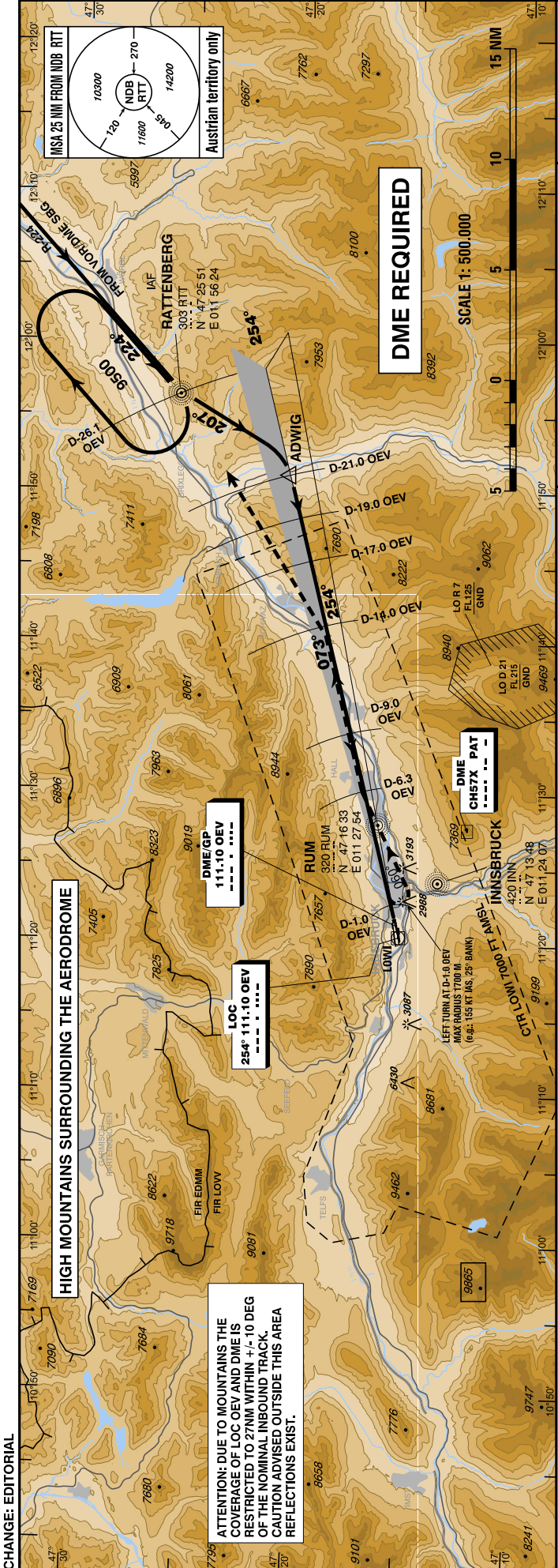
INNSBRUCK (LOWI)
 ÖSTERREICH AUSTRIA
 LOC/DME PROCEDURE EAST
 (3.77° GP available)

INSTRUMENT APPROACH CHART - ICAO

VAR 4° E

AD ELEV 1907 FT
 THR 26 ELEV 1894 FT
 HGT RELATED TO THR ELEV

Radar	128.975Mhz, 119.275Mhz
Arrival	130.475Mhz
Tower	120.100Mhz
Delivery	123.400Mhz
Atis	126.030Mhz

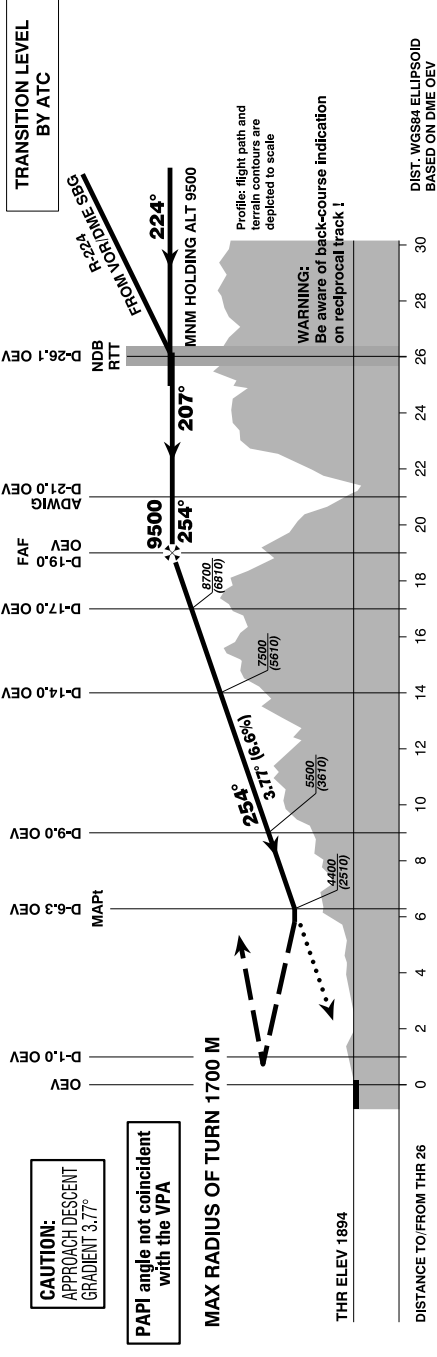


CONTOUR LEGEND

10000 FT
9000 FT
8000 FT
7000 FT
6000 FT
5000 FT
4000 FT
3000 FT
2000 FT
1000 FT
M.S.L.

Missed Approach:
 Climb on LOC-OEV with MAX GRADIENT.
 At D-1.0 OEV turn left and follow QDM 060° in direction to locator RUM, rejoin LOC-OEV outbound; continue on LOC 073° with MAX CLIMB GRADIENT. When crossing D-14.0 OEV turn left to RTT and enter the holding at 9500 FT AMSL.

**BEARINGS, TRACKS AND RADIALS ARE MAGNETIC
 ALTITUDES, ELEVATIONS AND HEIGHTS ARE IN FEET
 DISTANCES ARE IN NM**



		D-19.0 OEV to D-6.3 OEV - DISTANCE 12.7 NM								
		AERA OF VISUAL MANOEUVRING								
		SEE LOWI AD 2 MAP 14-1								
		GS (KT)	80	100	120	140	160	180		
		MIN : SEC	9:32	7:37	6:21	5:27	4:46	4:14		
			14	13	12	11	10	9	8	
			13.8	12.8	11.8	10.8	9.8	8.8	7.8	
			7500	7100	6700	6300	5900	5500	5100	
			(5606)	(5206)	(4806)	(4406)	(4006)	(3606)	(3206)	
MDA (MDH) IN FT	MA CLIMB GRADIENT		A	B	C	D				
	2.5%	4900 (3010)	D-7.5 OEV							
	3.0%	4400 (2510)	D-6.3 OEV							
	4.0%	3700 (1810)	D-4.5 OEV							
	5.0%	3300 (1410)	D-3.5 OEV							
		2800 M	3700 M	4500 M						

The chart may only be used in connection with the description of the procedure !