

Courtesy of Austro Control GmbH

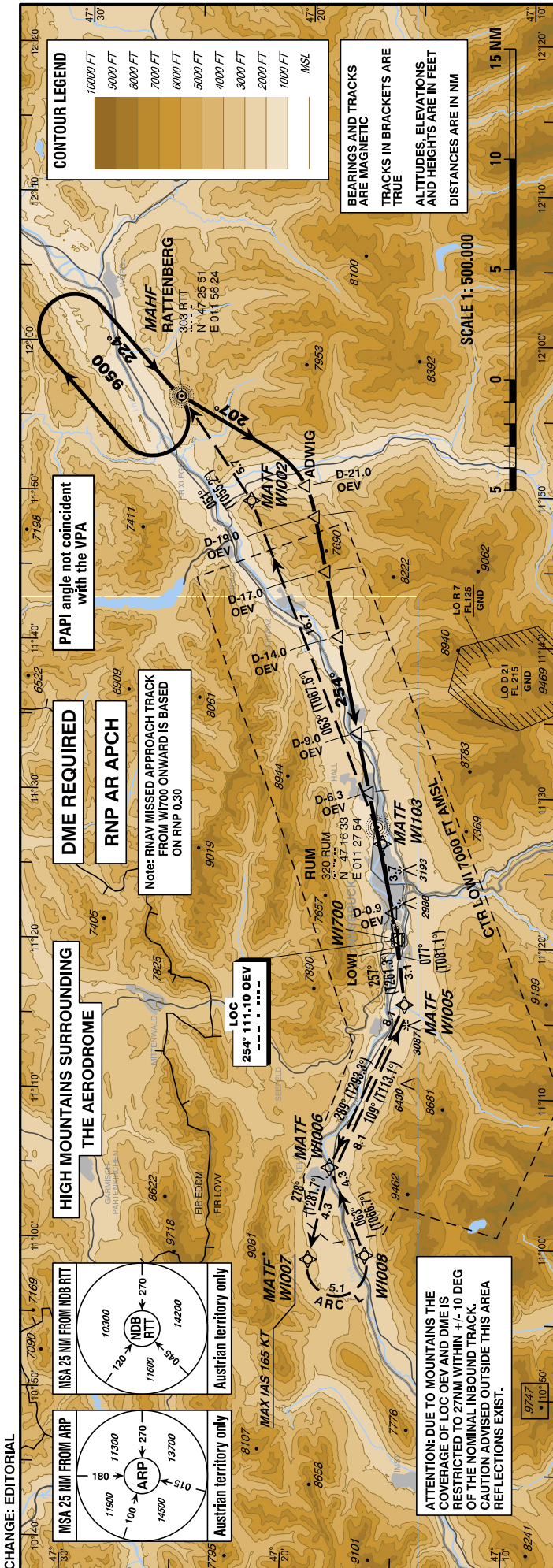
LOC R RWY 26
(LOC RWY 26 followed by RNAV RNP 0.3 Missed Approach)
(CAT A / B / C)

INSTRUMENT
APPROACH CHART - ICAO

VAR 4° E

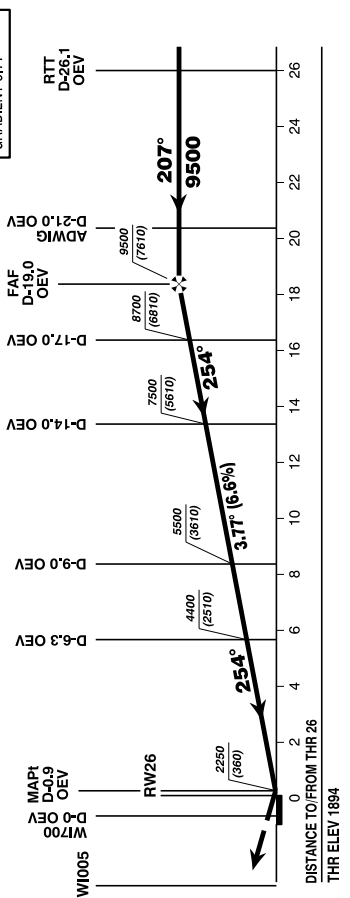
AD ELEV 1907 FT
THR 26 ELEV 1894 FT
HGT RELATED TO THR ELEV

Radar 128.975Mhz, 119.275Mhz
Arrival 130.475Mhz
Tower 120.100Mhz
Delivery 123.400Mhz
Atis 126.030Mhz



CAUTION:
APPROACH DESCENT
GRADIENT 3.7°

TRANSITION LEVEL
BY ATC



WAYPOINT LIST (WGS84):

RTT	N472551.32	E0115624.19
W1002	N472236.01	E0114930.01
W1005	N471508.72	E0111606.82
W1006	N471820.40	E0110509.80
W1007	N471912.18	E0105859.94
W1008	N471638.56	E0105921.62
W1009	N471753.02	E0105834.83
(= ARC center point)		
W1103	N471616.49	E0112647.56
W1100	N471530.91	E0112026.63
RW26	N471541.83	E0112125.26
ARP	N471537.00	E0112038.00

MISSED APPROACH:
Climb VIA RNAV MISSED APPROACH-TRACK TO RTT;
CLIMB TO 11500 FT AMSL AND HOLD.

MA CLIMB GRADIENT until passing 3200 FT, thereafter 2.5%	AERA OF VISUAL MANOEUVRING SEE LOWI AD 2 MAP 14-1			D-19.0 OEV to D-0.9 OEV - DISTANCE 18.1 NM																	
	A	B	C	GS (KT)	80	100	120	140	160	180	MIN : SEC	13:35	10:52	9:03	7:45	6:47	6:02				
5.0%				DME OEV	18	17	16	15	14	13	12	11	10	9	8	7	6	5	4	3	2
4.0%				DIST THR	17.8	16.8	15.8	14.8	13.8	12.8	11.8	10.8	9.8	8.8	7.8	6.8	5.8	4.8	3.8	2.8	1.8
2.5%				ALT (HEIGHT)	9100	8700	8300	7900	7500	7100	6700	6300	5900	5500	5100	4700	4300	3900	3500	3100	2700
					(7206)	(6806)	(6406)	(6006)	(5606)	(5206)	(4806)	(4406)	(4006)	(3606)	(3206)	(2806)	(2406)	(2006)	(1606)	(1206)	(806)

SPECIAL AUTHORIZATION REQUIRED

This procedure is permissible for special equipped aircraft and requires authorization by Austro Control GmbH for detailed information see LOWI AD 2.22, item 3.6.

The chart may only be used in connection with the description of the procedure!