

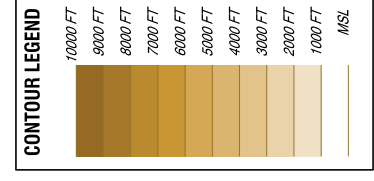
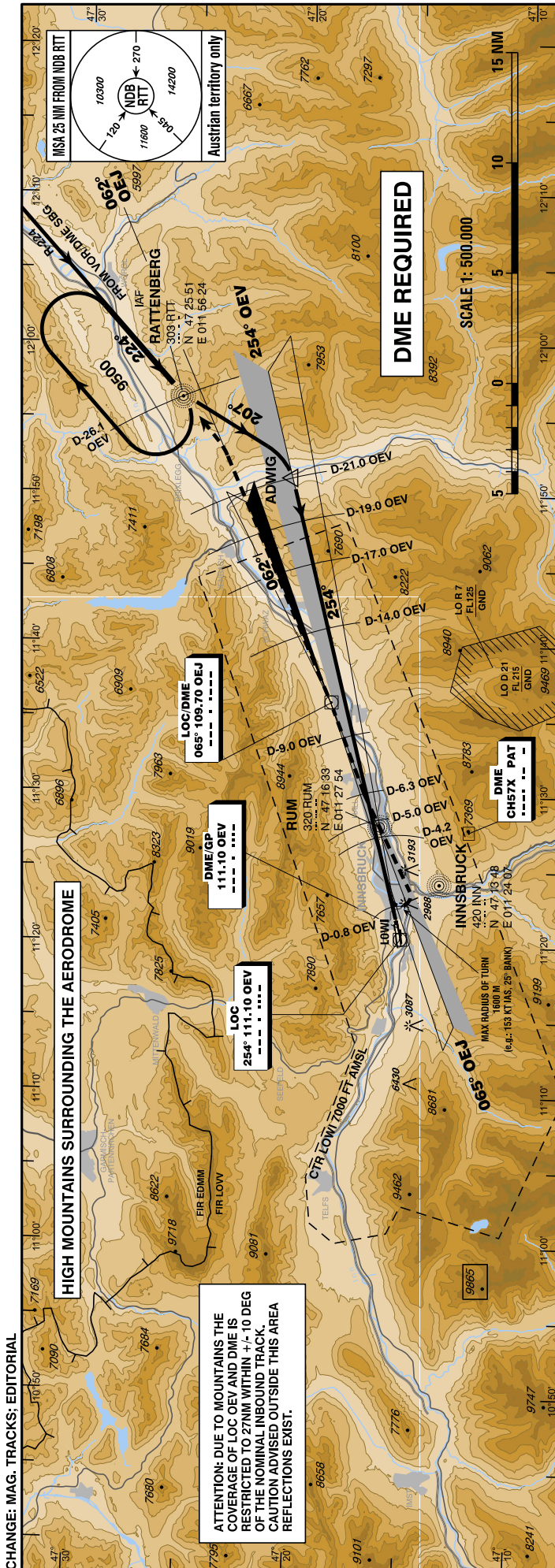
INSTRUMENT
APPROACH
CHART - ICAO

VAR 4° E

AD ELEV 1907 FT
THR 26 ELEV 1894 FT
HGT RELATED TO THR ELEV

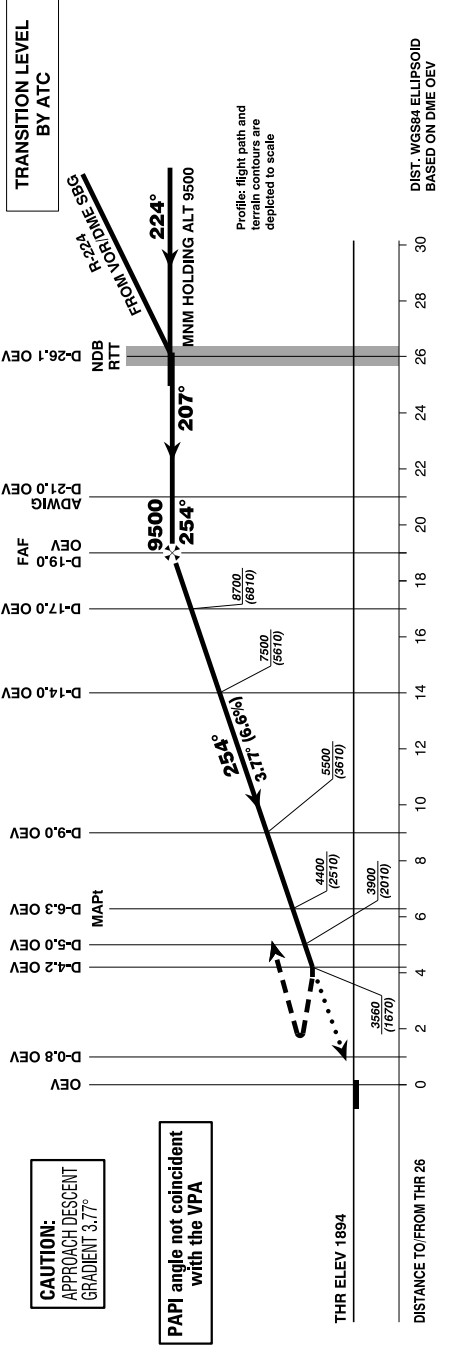
Radar 128.975Mhz, 119.275Mhz
Arrival 130.475Mhz
Tower 120.100Mhz
Delivery 123.400Mhz
Atis 126.030Mhz

INNSBRUCK (LOWI)
ÖSTERREICH AUSTRIA
SPECIAL LOC/DME PROCEDURE EAST
(3.77° GP available)



Missed Approach:
Climb on LOC-OEV with MAX GRADIENT.
At D-0.8 OEV turn left and follow QDM 060° in direction to locator RUM and continue on LOC-OEJ (065°/062°) with MAX CLIMB GRADIENT to 9500 FT AMSL, turn left to RTT and hold.

**BEARINGS, TRACKS AND RADIALS ARE MAGNETIC
ALTITUDES, ELEVATIONS AND HEIGHTS ARE IN FEET
DISTANCES ARE IN NM**



MDA (MDH) IN FT	MA - CLIMB GRADIENT		AERA OF VISUAL MANOEUVRING SEE LOWI AD 2 MAP 14-1																		
	INITIAL	FINAL	A	B	C	D	DME OEV		DIST THR		ALT		(HEIGHT)								
								18	17.8	9100	8700	8300	7900	7500	7100	6700	6300	5900	5500	5100	3206
according special permission This procedure is permissible for special equipped aircraft and requires authorization by Austro Control GmbH.																					

CHANGE: MAG. TRACKS; EDITORIAL

ATTENTION: DUE TO MOUNTAINS THE COVERAGE OF LOC OEV AND DME IS RESTRICTED TO 27NM WITHIN +/- 10 DEG OF THE NOMINAL INBOUND TRACK. CAUTION ADVISED OUTSIDE THIS AREA REFLECTIONS EXIST.

CAUTION: APPROACH DESCENT GRADIENT 3.77°

PAPI angle not coincident with the VPA