

Courtesy of Austro Control GmbH

CHANGE: MAG. TRACKS; EDITORIAL

INSTRUMENT APPROACH CHART - ICAO

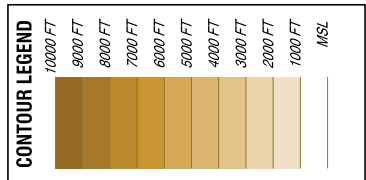
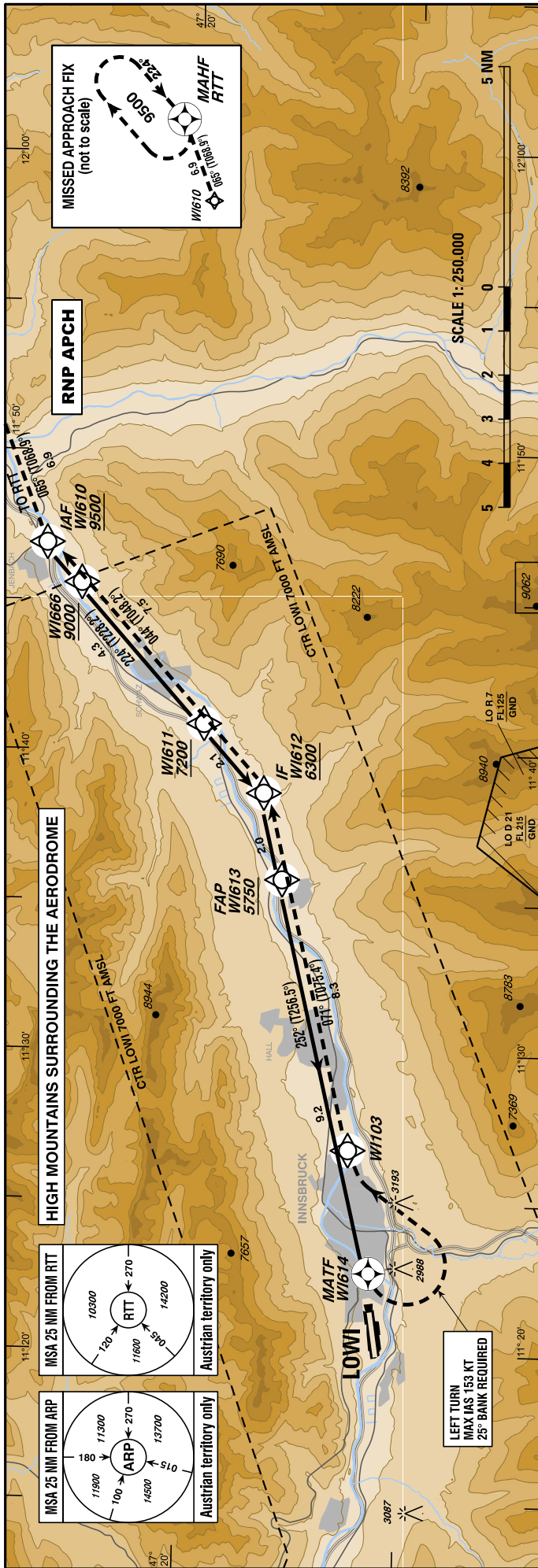
VAR 4° E

AD ELEV 1907 FT
THR 26 ELEV 1894 FT
HGT RELATED TO THR ELEV

Radar 128.975Mhz, 119.275Mhz
Arrival 130.475Mhz
Tower 120.100Mhz
Delivery 123.400Mhz
Atis 126.030Mhz

EGNOS
CH 95193
E26A

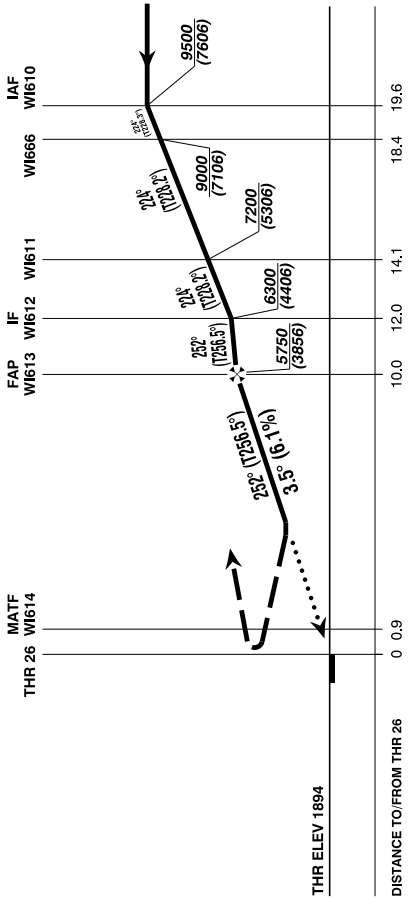
INNSBRUCK (LOWI)
ÖSTERREICH AUSTRIA
RNP E RWY 26 (LPV only)
OFFSET 4.7' LEFT (CAT A/B/C)



BEARINGS, TRACKS AND RADIALS ARE MAGNETIC
ALTITUDES, ELEVATIONS AND HEIGHTS ARE IN FEET
DISTANCES ARE IN NM

TRANSITION LEVEL BY ATC

RDH 50 FT



W1613 to THR - DISTANCE 10.0 NM

GS (KT)	80	100	120	140	160	180
W1613 - THR	7:30	6:00	5:00	4:17	3:45	3:20
Rate of descent (6.1%)	490	620	740	860	990	1110
DIST In NM to THR	10	9	8	7	6	5
ALT (HEIGHT)	5750 (3856)	5360 (3466)	4980 (3086)	4590 (2696)	4200 (2306)	3820 (1926)
						3440 (1546)

MISSED APPROACH:
CLIMB STRAIGHT AHEAD TO W1614, THEN TURN LEFT AND FOLLOW THE RNAV MISSED APPROACH TRACK TO RTT. CLIMB TO 9500 FT AMSL AND HOLD.

MA CLIMB GRADIENT	A	B	C
OCA (OCH) IN FT	4300 (2406)	3900 (2006)	3300 (1406)

**Instrument Approach Procedure Coding Table
Innsbruck RNP E RWY 26**

Path Terminator	Waypoint				Course/Track ° MAG (° True)	DIST NM	Turn Direction	Constraints		Navigation Specification	Remarks
	Identifier	Type	Flyover	Coordinates				Level	Speed		
IF	WI610	IAF	no	N472322.41 E0114654.41				A9500+		RNP APCH	
TF	WI666		no	N472235.13 E0114536.39	224° (228.3°)	1.2		A9000+		RNP APCH	
TF	WI611		no	N471944.76 E0114055.80	224° (228.2°)	4.3		A7200+		RNP APCH	
TF	WI612	IF	no	N471821.49 E0113838.95	224° (228.2°)	2.1		A6300+		RNP APCH	
TF	WI613	FAP	no	N471753.55 E0113547.48	252° (256.5°)	2.0	right	A5750+		RNP APCH	
TF	WI614	MATF	yes	N471544.57 E0112242.29	252° (256.5°)	9.2				RNP APCH	4.7° offset left of RWY Centerline VPA (°) / TCH (ft): -3.5 / 50
DF	WI103	MATF	no	N471616.49 E0112647.56			left		K153-	RNP APCH	25° bank required
TF	WI612	MATF	no	N471821.49 E0113838.95	071° (075.4°)	8.3				RNP APCH	
TF	WI610	MATF	no	N472322.41 E0114654.41	044° (048.2°)	7.5	left			RNP APCH	
TF	RTT	MAHF	yes	N472551.32 E0115624.19	065° (068.9°)	6.9	right	A9500+		RNP APCH	
HM	RTT	MAHF	yes	N472551.32 E0115624.19	224° (228.7°)		right	A9500+		RNP APCH	

RNAV Holding

Holding Point	Inbound Track ° True	Inbound Track ° MAG	Turn Direction	MAX IAS	Minimum Holding Altitude FT MSL / FL	Time	DIST NM	Remarks
RTT	228.7°	224°	right		A9500	1 MIN		

For Flight Simulation and non commercial use only!
Courtesy of Austro Control GmbH



**SBAS FAS Data Block Coding Table
Innsbruck RNP E RWY 26**

Input data

Operation Type	0
SBAS Provider	1
Airport Identifier	LOWI
Runway	26
Runway Direction	0
Approach Performance Designator	0
Route Indicator	E
Reference Path Data Selector	0
Reference Path Identifier	E26A
LTP/FTP Latitude	471532.2960N
LTP/FTP Longitude	0112128.0660E
LTP/FTP Ellipsoidal Height (metres)	626.0
FPAP Latitude	471517.7745N
Delta FPAP Latitude (seconds)	-14.5215
FPAP Longitude	0112000.3950E
Delta FPAP Longitude (seconds)	-87.6710
Threshold Crossing Height	50.0
TCH Units Selector	0
Glidepath Angle (degrees)	3.49
Course Width (metres)	105.00
Length Offset (metres)	0
HAL (metres)	40.0
VAL (metres)	35.0

Output data

Data Block	10 09 17 0F 0C 1A 28 00 01 36 32 05 90 06 48 14 04 CE DF 04 74 2C 8D 8E FF 12 53 FD F4 01 5D 01 64 00 C8 AF 53 B3 56 40
Calculated CRC Value	53B35640

Required Additional Data

ICAO Code	LO
LTP/FTP Orthometric Height (metres)	577.0
FPAP Orthometric Height (metres)	577.0