

Courtesy of Austro Control GmbH

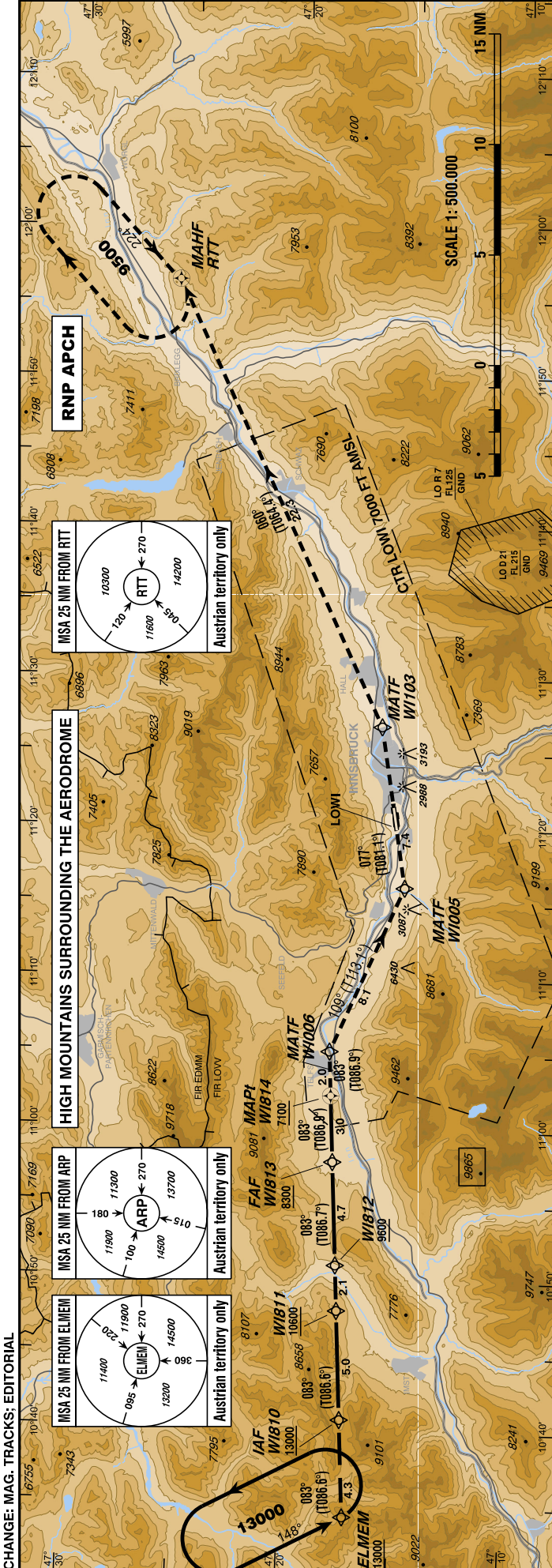
INSTRUMENT
APPROACH
CHART - ICAO

VAR 4° E

AD ELEV 1907
THR 08 ELEV 1907
HGT RELATED TO AD ELEV

Radar 128.975Mhz, 119.275Mhz
Arrival 130.475Mhz
Tower 120.100Mhz
Delivery 123.400Mhz
Atis 126.030Mhz

INNSBRUCK
ÖSTERREICH AUSTRIA
RNP Y RWY 08

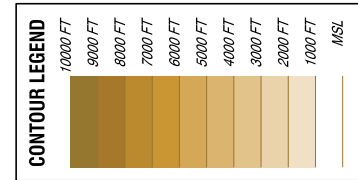
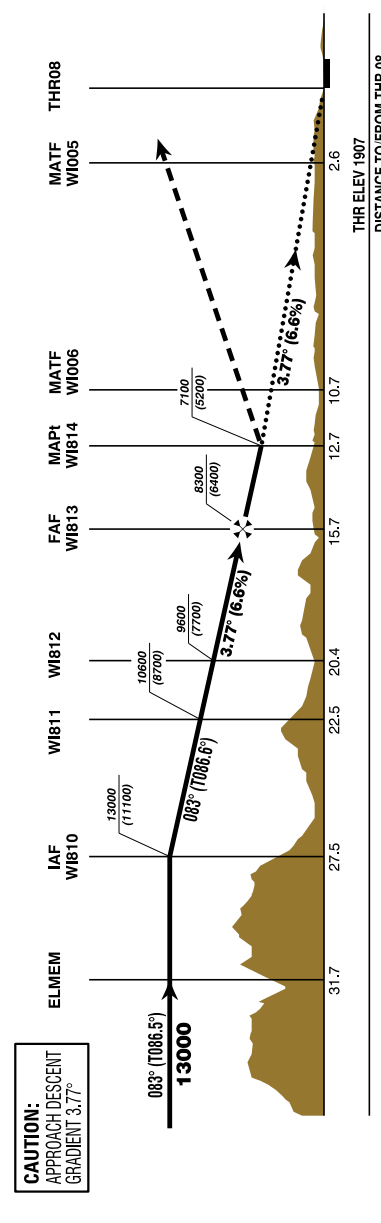


CAUTION:
APPROACH DESCENT
GRADIENT 3.77°

TRANSITION LEVEL
BY ATC

PAPI angle not coincident
with the VPA

BEARINGS AND TRACKS
ARE MAGNETIC
TRACKS IN BRACKETS ARE
TRUE
ALTITUDES, ELEVATIONS
AND HEIGHTS ARE IN FEET
DISTANCES ARE IN NM



MISSED APPROACH:
CLIMB VIA RNAV MISSED APPROACH TRACK TO RTT;
CLIMB TO 9500 FT AMSL AND HOLD.

Note: RNAV procedure for cloudbreaking followed by visual approach along prescribed tracks only provided effective external visual reference to the terrain exists and can be maintained from at or before reaching the MAPI, continue visually along the prescribed track (identical to Missed Approach track) and the required vertical descend profile. The runway may not be or remain in sight at all times but other visual cues surrounding the track and the vicinity of the aerodrome may be used as sufficient external visual reference.
Pilots shall be well familiar with RNAV procedures in general but especially with this procedure and the terrain along the western part of the Inn Valley, Ceiling (5200 ft AAL) and VIS 5 km required at MDA and along the visual part west of the aerodrome.

W1813 to W1814 - DISTANCE 3.0 NM
(Timing not authorized for defining the MAPI)

	GS (KT)	80	100	120	140	160	180
W1813 - W1814	MIN : SEC	2:15	1:48	1:30	1:17	1:08	1:00
W1813 - RWY 08	MIN : SEC	11:46	9:26	7:51	6:44	5:53	5:14
Rate of descent (6.6%)	FT / MIN	530	670	800	930	1070	1200
DIST in NM to W1814		2.3	1.3	0.3			
DIST in NM to THR		15	14	13			
ALT (HEIGHT)		8000 (6093)	7600 (5693)	7200 (5293)			

MDA (MDH) IN FT	A	B	C	D
LNAV			7100 (5200)	

For Flight Simulation and non commercial use only !
Courtesy of Austro Control GmbH
vacc
AUSTRIA

Instrument Approach Procedure Coding Table Innsbruck RNP Y RWY 08											
Path Terminator	Waypoint				Course/Track ° MAG (° True)	DIST NM	Turn Direction	Constraints		Navigation Specification	Remarks
	Identifier	Type	Flyover	Coordinates				Level	Speed		
	ELMEM		no	N471708.28 E0103414.66				A13000+			
IF	WI810	IAF	no	N471723.71 E0104036.33	083° (086.6°)	4.3		A13000+		RNP APCH	
TF	WI811		no	N471741.19 E0104753.94	083° (086.6°)	5.0		A10600+		RNP APCH	
TF	WI812		no	N471748.33 E0105056.30	083° (086.7°)	2.1		A9600+		RNP APCH	
TF	WI813	FAF	no	N471804.14 E0105749.49	083° (086.7°)	4.7		A8300+		RNP APCH	
TF	WI814	MAPt	yes	N471813.91 E0110213.67	083° (086.9°)	3.0		A7100+		RNP APCH	
TF	WI006	MATF	no	N471820.40 E0110509.80	083° (086.9°)	2.0				RNP APCH	
TF	WI005	MATF	no	N471508.72 E0111606.82	109° (113.1°)	8.1	right			RNP APCH	
TF	WI103	MATF	no	N471616.49 E0112647.56	077° (081.1°)	7.4	left			RNP APCH	
TF	RTT	MAHF	yes	N472551.32 E0115624.19	060° (064.4°)	22.3	left	A9500+		RNP APCH	
RNAV Holding											
Holding Point	Inbound Track ° True	Inbound Track ° MAG	Turn Direction	MAX IAS	Minimum Holding Altitude FT MSL / FL	Time	DIST NM	Remarks			
ELMEM	151.6°	148°	left		A13000	1 MIN					
RTT	228.7°	224°	right		A9500	1 MIN					
THR Coordinates											
RWY 08	N471531.97 E0111954.11										