

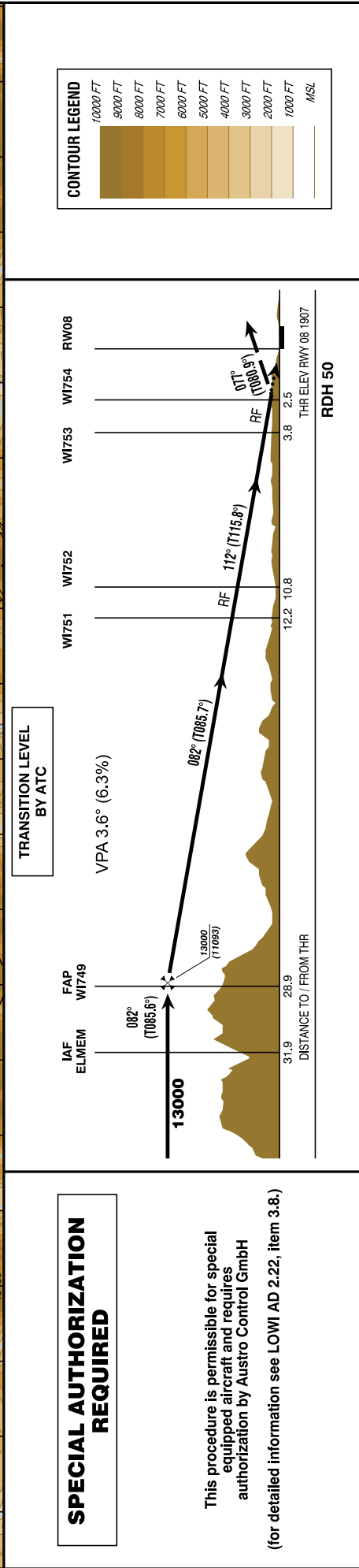
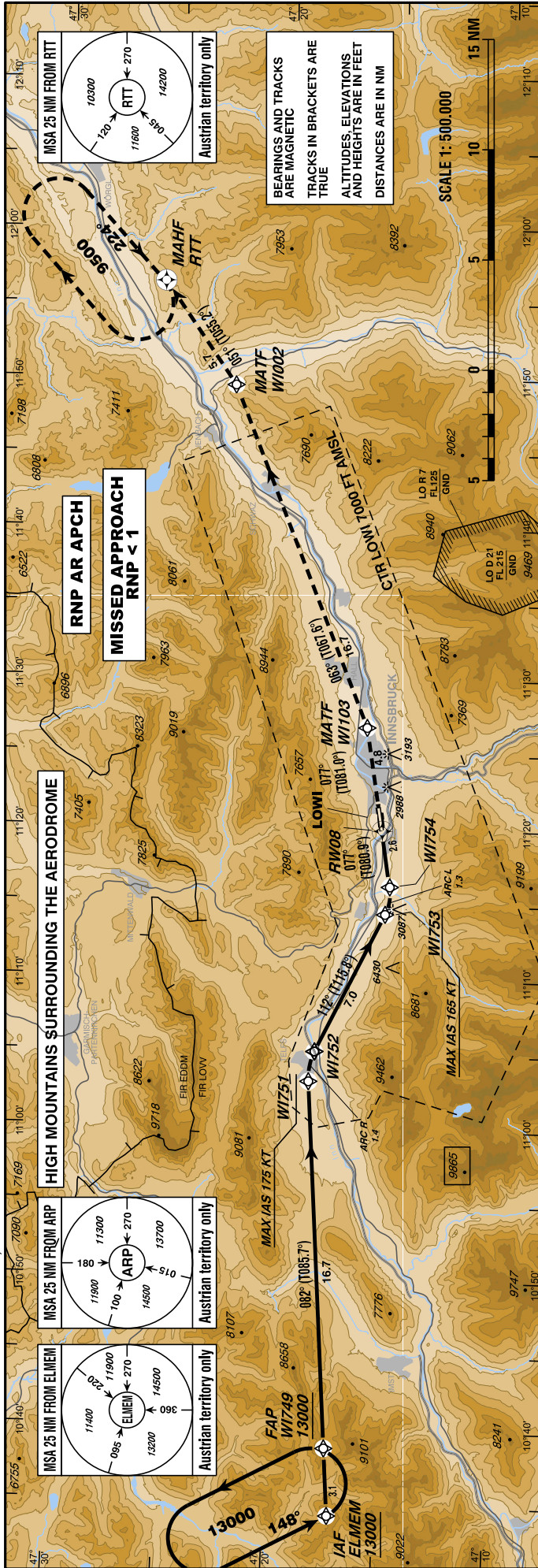
INSTRUMENT
APPROACH
CHART - ICAO

VAR 4° E

AD ELEV 907
THR 08 ELEV 1907
HGT RELATED TO THR ELEV

Radar 128.975Mhz, 119.275Mhz
Arrival 130.475Mhz
Tower 120.100Mhz
Delivery 123.400Mhz
Atis 126.030Mhz

CHANGE: PLAN VIEW DESIGNATOR NAME RW08; EDITORIAL



SPECIAL AUTHORIZATION REQUIRED

This procedure is permissible for special equipped aircraft and requires authorization by Austro Control GmbH
(for detailed information see LOWI AD 2.22, item 3.8.)

GS (KT)	80	100	120	140	160	180
FT / MIN	510	630	760	890	1010	1140

- Dual GNSS and at least one IRU or equivalent
- DMEDME, LOC and VOR/DME updating not authorized
- For uncompensated Baro-VNAV systems, procedure not authorized below AD temp -7°C
- VPA exceeds 3.6° above +11°C
- PAPI angle not coincident with the VPA

DA (DH) IN FT	A	B	C
RNP 0.3		2900 (1000)	

MISSED APPROACH:
CLIMB VIA RNAV MISSED APPROACH TRACK TO RTT;
CLIMB TO 9500 FT AMSL AND HOLD.
Note: Missed Approach Procedure is based on RNP 0.3

Instrument Approach Procedure Coding Table Innsbruck RNP Z RWY 08 (AR)

Path Terminator	Waypoint				Course/Track ° MAG (° True)	DIST NM	Turn Direction	ARC Centre Waypoint		ARC Radius NM
	Identifier	Type	Flyover	Coordinates				Identifier	Coordinates	
IF	ELMEM	IAF	no	N471708.28 E0103414.66						
TF	WI749	FAP	no	N471722.16 E0103842.94	082° (085.6°)	3.1				
TF	WI751		no	N471834.91 E0110309.49	082° (085.7°)	16.7				
RF	WI752		no	N471821.18 E0110508.91		1.4	right	WI755	N471540.17 E0110327.53	2.9
TF	WI753		no	N471518.89 E0111422.66	112° (115.8°)	7.0				
RF	WI754		no	N471507.99 E0111612.91		1.3	left	WI756	N471713.57 E0111543.43	2.1
TF	RW08		yes	N471531.97 E0111954.11	077° (080.9°)	2.5				
TF	WI103	MATF	no	N471616.49 E0112647.56	077° (081.0°)	4.8				
TF	WI002	MATF	no	N472236.01 E0114930.01	063° (067.6°)	16.7	left			
TF	RTT	MAHF	yes	N472551.32 E0115624.19	051° (055.2°)	5.7	left			

Waypoint Identifier	Constraints		RNP Value NM	Navigation Specification	Remarks
	Level	Speed			
ELMEM	A13000+		1.0	RNP AR APCH	
WI749	A13000+		0.3	RNP AR APCH	
WI751		K175-	0.3	RNP AR APCH	
WI752		K175-	0.3	RNP AR APCH	
WI753		K165-	0.3	RNP AR APCH	
WI754		K165-	0.3	RNP AR APCH	
RW08			0.3	RNP AR APCH	
WI103			0.3	RNP AR APCH	
WI002			0.3	RNP AR APCH	
RTT	A9500+		0.3	RNP AR APCH	

RNAV Holding

Holding Point	Inbound Track ° True	Inbound Track ° MAG	Turn Direction	MAX IAS	Minimum Holding Altitude FT MSL / FL	Time	DIST NM	Remarks
ELMEM	151.6°	148°	left		A13000	1 MIN		
RTT	228.7°	224°	right		A9500	1 MIN		