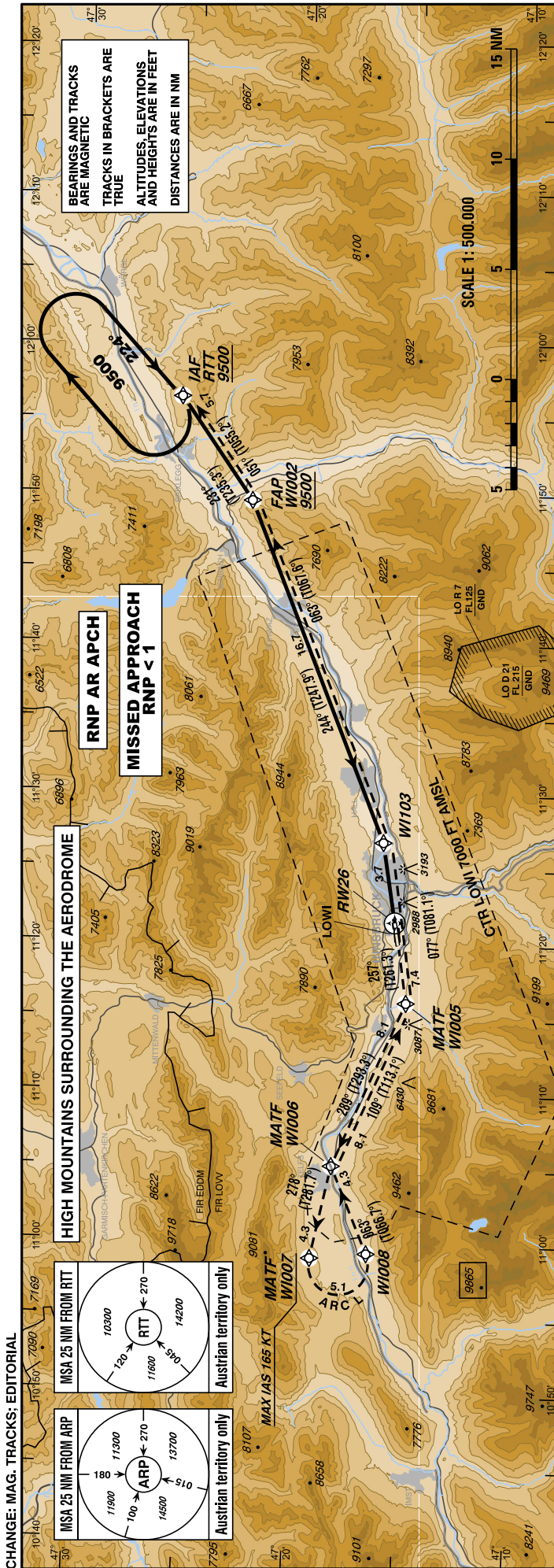


INSTRUMENT APPROACH CHART - ICAO

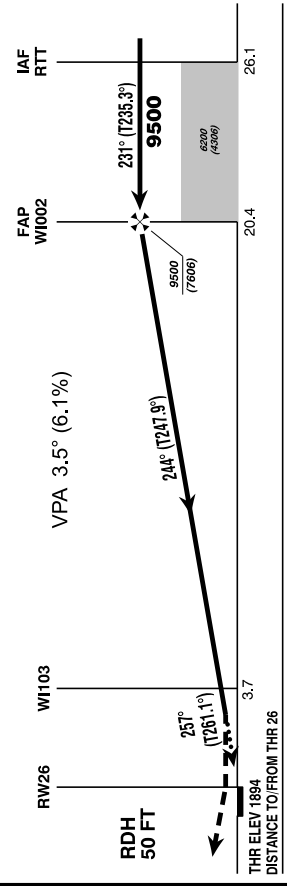
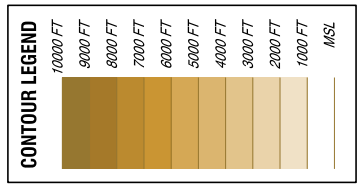
VAR 4° E

AD ELEV 1907 FT
THR 26 ELEV 1894 FT
HGT RELATED TO THR ELEV

Radar	128.975Mhz, 119.275Mhz
Arrival	130.475Mhz
Tower	120.100Mhz
Delivery	123.400Mhz
Atis	126.030Mhz



TRANSITION LEVEL BY ATC



SPECIAL AUTHORIZATION REQUIRED

This procedure is permissible for special equipped aircraft and requires authorization by Austro Control GmbH

(for detailed information see LOWI AD 2.22, item 3.9.)

GS (KT)	80	100	120	140	160	180
FT / MIN	490	620	740	860	990	1110

DA (DH) IN FT	A	B	C	D
RNP 0.3		2670	(776)	
RNP 0.15		2500	(610)	

MISSED APPROACH:
CLIMB VIA RNAV MISSED APPROACH TRACK TO RTT;
CLIMB TO 11500 FT AMSL AND HOLD.

Note: Missed Approach Procedure is based on RNP 0.3

- Dual GNSS and at least one IRU or equivalent
- DMEDME, LOC and VOR/DME updating not authorized
- For uncompensated Baro-VNAV systems, procedure not authorized below AD temp -7°C
- VPA exceeds 3.5° above +11°C

**Instrument Approach Procedure Coding Table
Innsbruck RNP Z RWY 26 (AR)**

Path Terminator	Waypoint				Course/Track ° MAG (° True)	DIST NM	Turn Direction	ARC Centre Waypoint		ARC Radius NM
	Identifier	Type	Flyover	Coordinates				Identifier	Coordinates	
IF	RTT	IAF	no	N472551.32 E0115624.19						
TF	WI002	FAP	no	N472236.01 E0114930.01	231° (235.3°)	5.7				
TF	WI103		no	N471616.49 E0112647.56	244° (247.9°)	16.7	right			
TF	RW26		yes	N471541.82 E0112125.24	257° (261.1°)	3.7	right			
TF	WI005	MATF	no	N471508.72 E0111606.82	257° (261.3°)	3.7				
TF	WI006	MATF	no	N471820.40 E0110509.80	289° (293.3°)	8.1	right			
TF	WI007	MATF	no	N471912.18 E0105859.94	278° (281.7°)	4.3	left			
RF	WI008		no	N471638.56 E0105921.62		5.1	left	WI009	N471753.02 E0105834.83	1.4
TF	WI006	MATF	no	N471820.40 E0110509.80	063° (066.7°)	4.3				
TF	WI005	MATF	no	N471508.72 E0111606.82	109° (113.1°)	8.1	right			
TF	WI103	MATF	no	N471616.49 E0112647.56	077° (081.1°)	7.4	left			
TF	WI002	MATF	no	N472236.01 E0114930.01	063° (067.6°)	16.7	left			
TF	RTT	MAHF	yes	N472551.32 E0115624.19	051° (055.2°)	5.7	left			

Waypoint Identifier	Constraints		RNP Value NM	Navigation Specification	Remarks
	Level	Speed			
RTT	A9500+		0.3	RNP AR APCH	MAHF at A11500+
WI002	A9500+		0.3	RNP AR APCH	
WI103			0.3	RNP AR APCH	
RW26			0.3	RNP AR APCH	
WI005			0.3	RNP AR APCH	
WI006			0.3	RNP AR APCH	
WI007		K165-	0.3	RNP AR APCH	
WI008		K165-	0.3	RNP AR APCH	

RNAV Holding								
Holding Point	Inbound Track ° True	Inbound Track ° MAG	Turn Direction	MAX IAS	Minimum Holding Altitude FT MSL / FL	Time	DIST NM	Remarks
RTT	228.7°	224°	right		A9500	1 MIN		