

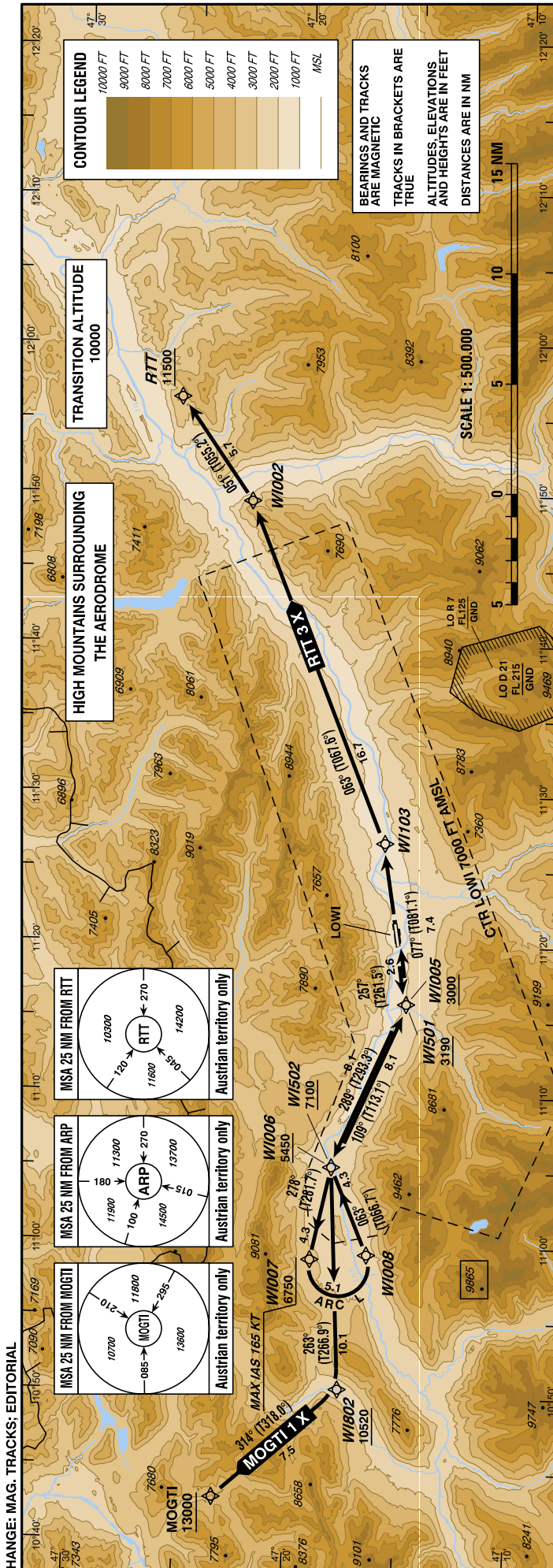
Courtesy of Austro Control GmbH

STANDARD DEPARTURE CHART -  
INSTRUMENT (SID) - ICAO

VAR 4° E

|          |                        |
|----------|------------------------|
| Radar    | 128.975Mhz, 119.275Mhz |
| Arrival  | 130.475Mhz             |
| Tower    | 120.100Mhz             |
| Delivery | 123.400Mhz             |
| Atis     | 126.030Mhz             |

**INNSBRUCK (LOWI)**  
ÖSTERREICH AUSTRIA  
RNAV (RNP) RWY 26



1. Dual GNSS and at least one IRU or equivalent
2. DME/DME, LOC and VOR/DME updating not authorized

**SPECIAL AUTHORIZATION  
REQUIRED**

This SID is permissible for special equipped aircraft and requires authorization by Austro Control GmbH  
(for detailed information see LOWI AD 2.22, item 3.9.)

**SPECIAL AUTHORIZATION REQUIRED** - This SID is permissible for special performance aircraft ONLY and requires authorization by Austro Control GmbH (for detailed information see LOWI AD 2.22, item 3.9.).

- Dual GNSS and at least one IRU or equivalent
- DME/DME, LOC and VOR/DME updating not authorized

| Designator                                    | Route  | After Take-Off       |                               | Remarks  |
|---|--|----------------------|-------------------------------|--|
|   |  | Climb to ..initially | Expect FREQ                   |  |
| <b>MOGTI 1 X</b><br>Mogti one x-ray departure | Climb on track 257° to WI501 - WI502 - WI802 - MOGTI | By ATC               | INNSBRUCK<br>RADAR<br>128.975 | Climb gradient at least 8,0% (490 FT/NM) until passing 7100 FT MSL, thereafter 5,6% (345 FT/NM). |

Contact INNSBRUCK RADAR when advised by Tower

**RNAV (RNP) SID Coding Table of MOGTI 1 X**

| Path Terminator | Waypoint   |         |                           | Course/<br>Track °<br>MAG<br>(° True) | DIST<br>NM | Turn<br>Direction | Constraints |       | RNP Value<br>NM | Remarks |
|-----------------|------------|---------|---------------------------|---------------------------------------|------------|-------------------|-------------|-------|-----------------|---------|
|                 | Identifier | Flyover | Coordinates               |                                       |            |                   | Level       | Speed |                 |         |
| CF              | WI501      | no      | N471508.72<br>E0111606.80 | 257°<br>(261.5°)                      | 2.6        |                   | A3190+      |       | 0.3             |         |
| TF              | WI502      | no      | N471820.40<br>E0110509.85 | 289°<br>(293.3°)                      | 8.1        | right             | A7100+      |       | 0.3             |         |
| TF              | WI802      | no      | N471746.91<br>E0105022.55 | 263°<br>(266.9°)                      | 10.1       | left              | A10520+     |       | 0.3             |         |
| TF              | MOGTI      | no      | N472320.33<br>E0104300.61 | 314°<br>(318.0°)                      | 7.5        | right             | A13000+     |       | 0.3             |         |

| Designator   | Route  | After Take-Off       |                               | Remarks  |
|--|--|----------------------|-------------------------------|--|
|  |  | Climb to ..initially | Expect FREQ                   |  |
| <b>RTT 3 X</b><br>Rattenberg three x-ray departure | Climb on track 257° to WI005 - WI006 - WI007 - WI008 - WI006 - WI005 - WI103 - WI002 - RTT | By ATC               | INNSBRUCK<br>RADAR<br>128.975 | Climb gradient at least 7,0% (430 FT/NM) until passing WI005, thereafter 5,0% (305 FT/NM) until passing WI008, thereafter 3,3% (205 FT/NM) |

Contact INNSBRUCK RADAR when advised by Tower

**RNAV (RNP) SID Coding Table of RTT 3 X**

| Path Terminator | Waypoint   |         |                           | Course/<br>Track °<br>MAG<br>(° True) | DIST<br>NM | Turn<br>Direction | Constraints |       | RNP Value<br>NM | Remarks  |
|-----------------|------------|---------|---------------------------|---------------------------------------|------------|-------------------|-------------|-------|-----------------|--|
|                 | Identifier | Flyover | Coordinates               |                                       |            |                   | Level       | Speed |                 |  |
| CF              | WI005      | no      | N471508.72<br>E0111606.82 | 257°<br>(261.5°)                      | 2.6        |                   | A3000+      |       | 0.3             |  |
| TF              | WI006      | no      | N471820.40<br>E0110509.80 | 289°<br>(293.3°)                      | 8.1        | right             | A5450+      |       | 0.3             |  |
| TF              | WI007      | no      | N471912.18<br>E0105859.94 | 278°<br>(281.7°)                      | 4.3        | left              | A6750+      | K165- | 0.3             |  |
| RF              | WI008      | no      | N471638.56<br>E0105921.62 |                                       | 5.1        | left              |             | K165- | 0.3             | ARC Centre: WI009<br>N471753.02<br>E0105834.83<br>ARC Radius: 1.4 NM |
| TF              | WI006      | no      | N471820.40<br>E0110509.80 | 063°<br>(066.7°)                      | 4.3        |                   |             |       | 0.3             |  |
| TF              | WI005      | no      | N471508.72<br>E0111606.82 | 109°<br>(113.1°)                      | 8.1        | right             |             |       | 0.3             |  |
| TF              | WI103      | no      | N471616.49<br>E0112647.56 | 077°<br>(081.1°)                      | 7.4        | left              |             |       | 0.3             |  |
| TF              | WI002      | no      | N472236.01<br>E0114930.01 | 063°<br>(067.6°)                      | 16.7       | left              |             |       | 0.3             |  |
| TF              | RTT        | no      | N472551.32<br>E0115624.19 | 051°<br>(055.2°)                      | 5.7        | left              | A11500+     |       | 0.3             |  |