

For Flight Simulation and non commercial use only !

Courtesy of Austro Control GmbH

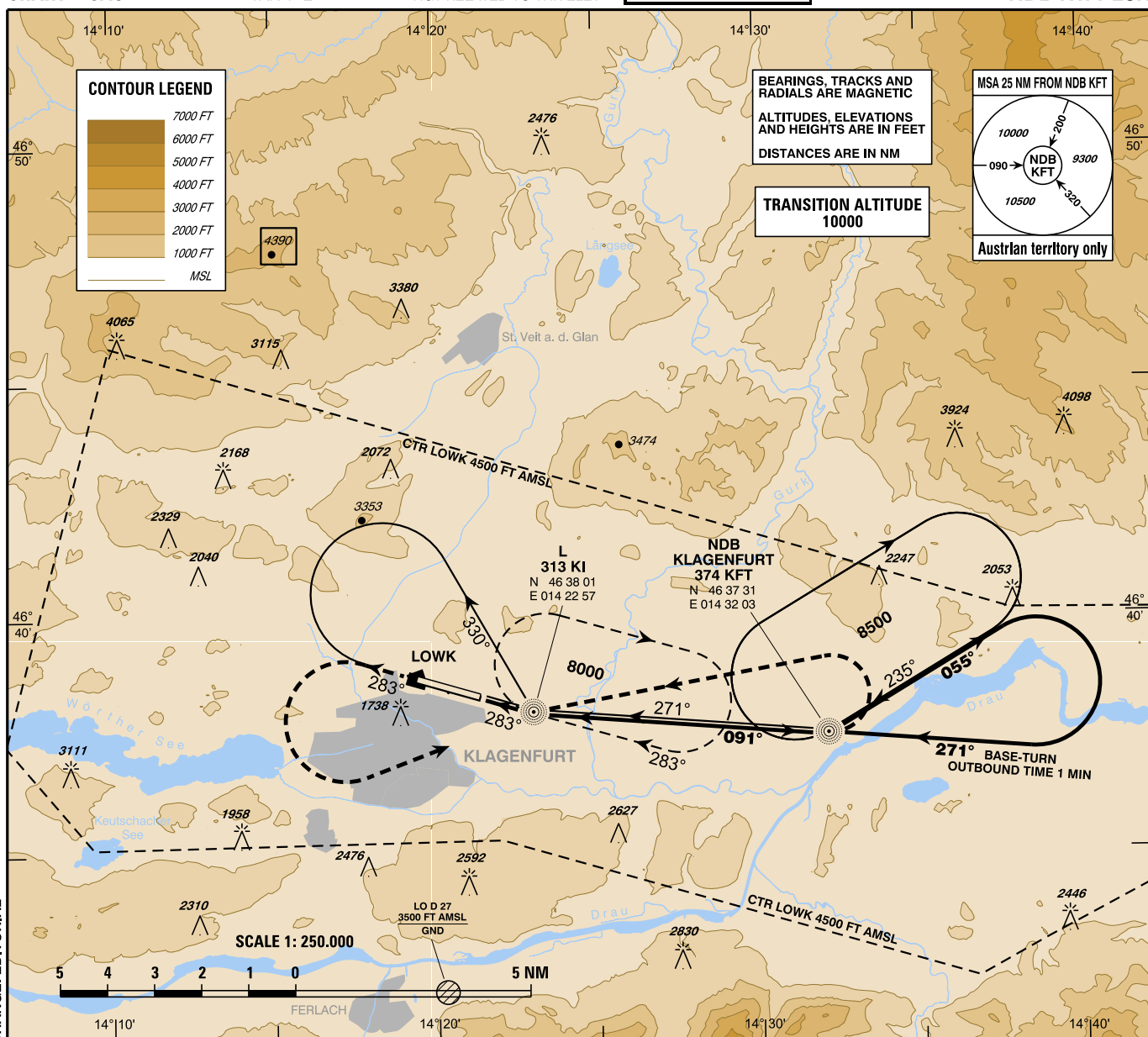
INSTRUMENT APPROACH CHART - ICAO

VAR 4° E

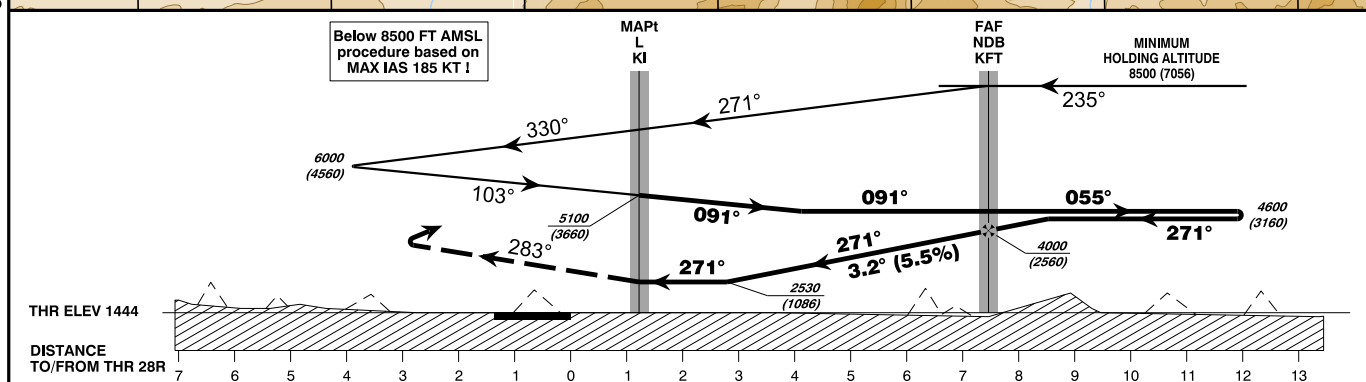
AD ELEV 1472 FT
THR 28R ELEV 1444 FT
HGT RELATED TO THR ELEV

Radar	123.325Mhz
Tower	118.125Mhz
Atis	126.330Mhz

KLAGENFURT (LOWK)
ÖSTERREICH AUSTRIA
NDB RWY 28R



CHANGE: EDITORIAL



MISSED APPROACH : CLIMB ON TRACK 283°. WHEN PASSING 4000 FT AMSL, TURN LEFT TO L KI; CONTINUE CLIMB ON TRACK 091° TO NDB KFT THEN TURN LEFT TO L KI; CLIMB TO 8000 FT AMSL AND HOLD.

NOTE 1: ACCELERATE AFTER COMPLETION OF THE MA-TURN AND HOMING L KI !
NOTE 2: MISSED APPROACH TURN LIMITED TO MAX IAS 185 KT !

OCA (OCH) IN FT	A	B	C	D
STRAIGHT-IN APPROACH NOTE: FINAL APPROACH TRACK BETWEEN NDB KFT AND L KI NOT ALIGNED WITH RUNWAY CENTRE LINE	2530 (1086)			
CIRCLING PROCEDURE SEE LOWK AD 2 MAP 14-1				

NDB KFT TO L KI - DISTANCE 6.3 NM							
L KI TO THR 28R - DISTANCE 1.2 NM							
(Timing not authorized for defining the MAPt)							
	GS (KT)	80	100	120	140	160	180
NDB KFT - L KI	MIN : SEC	4:44	3:47	3:09	2:42	2:22	2:06
L KI - THR 28R	MIN : SEC	0:54	0:43	0:36	0:31	0:27	0:21

vacc AUSTRIA