

For Flight Simulation and non commercial use only !

Courtesy of Austro Control GmbH

CHANGE: EDITORIAL

INSTRUMENT APPROACH CHART - ICAO

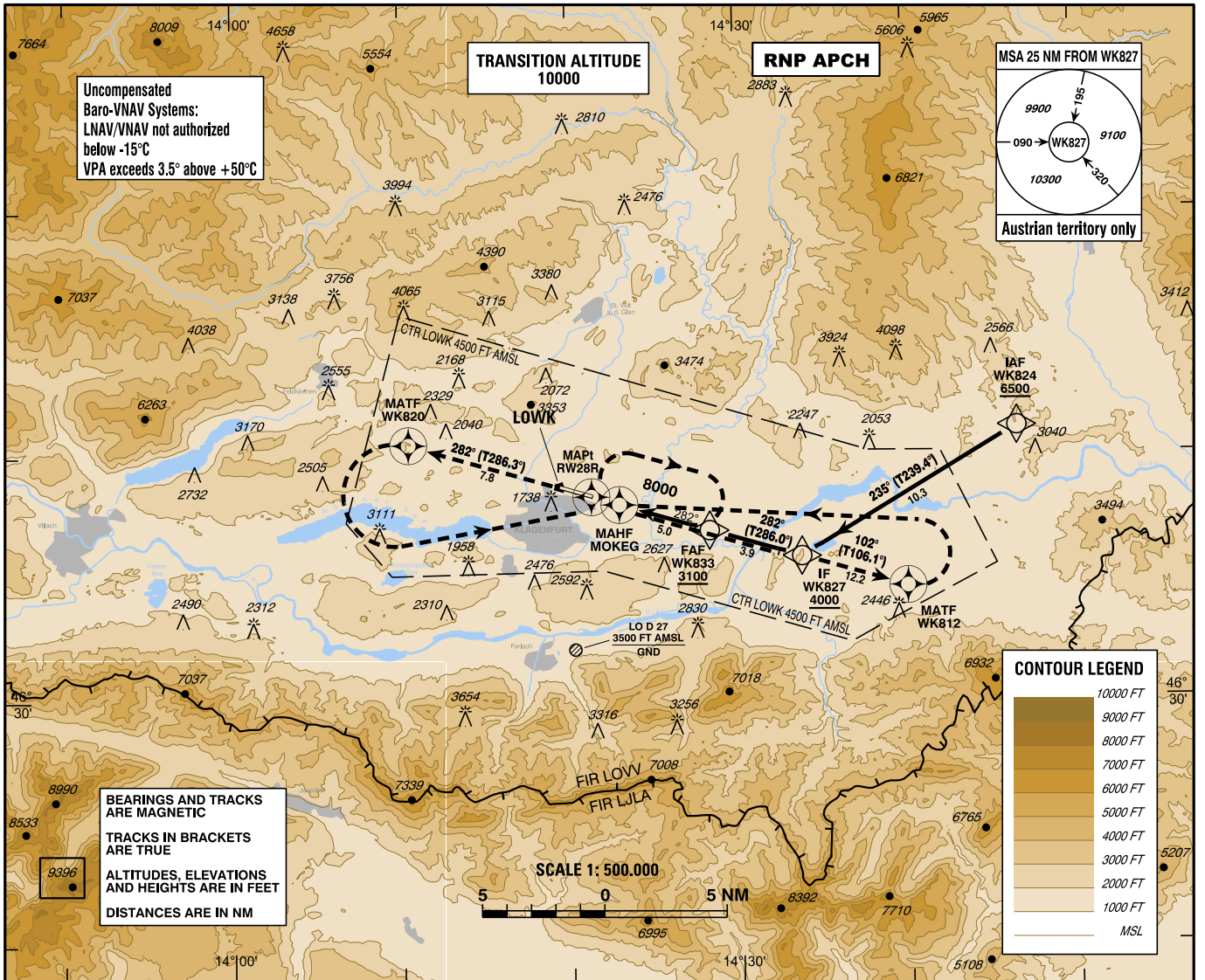
VAR 4° E

AD ELEV 1472 FT
THR 28R ELEV 1444 FT
HGT RELATED TO THR ELEV

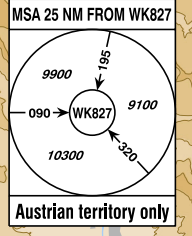
Radar 123.325Mhz
Tower 118.125Mhz
Atis 126.330Mhz

EGNOS
CH 42247
E28A

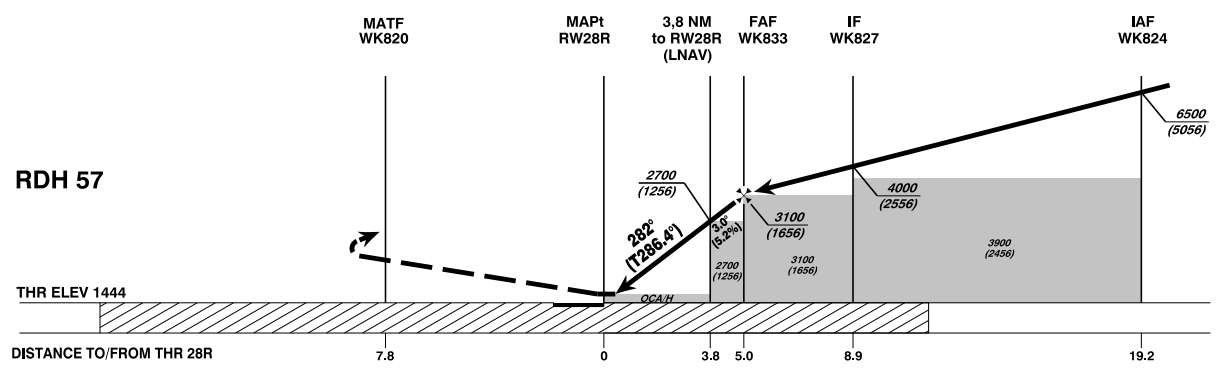
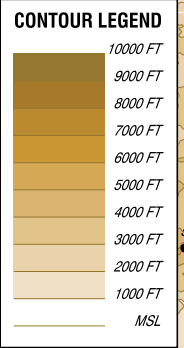
KLAGENFURT (LOWK)
ÖSTERREICH AUSTRIA
RNP RWY 28R



Uncompensated Baro-VNAV Systems:
LNAV/VNAV not authorized below -15°C
VPA exceeds 3.5° above +50°C



BEARINGS AND TRACKS ARE MAGNETIC
TRACKS IN BRACKETS ARE TRUE
ALTITUDES, ELEVATIONS AND HEIGHTS ARE IN FEET
DISTANCES ARE IN NM



MISSED APPROACH: CLIMB STRAIGHT AHEAD TO WK820, THEN TURN LEFT DIRECT TO MOKEG, THEN TURN RIGHT TO WK812, THEN TURN LEFT DIRECT TO MOKEG AND HOLD; DO NOT ENTER THE HOLDING BELOW 8000 FT AMSL.
NOTE: MISSED APPROACH TURN LIMITED TO MAX IAS 210 KT.

OCA (OCH)	MA CLIMB GRADIENT	A	B	C	D
LNAV	2.5 %	2260 (820)			
LNAV/VNAV	2.5 %	2007 (563)	2040 (596)	2059 (615)	2190 (746)
	4.0 %	1916 (472)	1928 (484)	1987 (543)	2190 (746)
LPV	2.5 %	1821 (377)	2038 (594)	2046 (602)	2057 (613)
	4.0 %	1588 (144)	1600 (156)	1609 (165)	1629 (185)

DIST to RW28R	4	3	2
ALTITUDE (HEIGHT)	2770 (1326)	2460 (1016)	2140 (696)

WK833 to RW28R - DISTANCE 5.0 NM							
(Timing not authorized for defining the MAPt)							
	GS (KT)	80	100	120	140	160	180
WK833 - RW28R	MIN : SEC	3:46	3:01	2:31	2:09	1:53	1:40
Rate of descent (5.2%)	FT / MIN	420	530	640	740	850	960

vacc AUSTRIA

**Instrument Approach Procedure Coding Table
Klagenfurt RNP RWY 28R**

Path Terminator	Waypoint				Course/ Track ° MAG (° True)	DIST NM	Turn Direction	Constraints		Navigation Specification	Remarks
	Identifier	Type	Flyover	Coordinates				Level	Speed		
IF	WK824	IAF	no	N464105.85 E0144634.65				A6500+		RNP APCH	
TF	WK827	IF	no	N463551.30 E0143344.35	235° (239.4°)	10.3		A4000+	K185-	RNP APCH	
TF	WK833	FAF	no	N463655.94 E0142816.80	282° (286.0°)	3.9	right	A3100+		RNP APCH	
TF	RW28R	MAPt	yes	N463820.70 E0142117.24	282° (286.4°)	5.0				RNP APCH	
TF	WK820	MATF	yes	N464031.11 E0141026.74	282° (286.3°)	7.8				RNP APCH	
DF	MOKEG	MATF	no	N463800.64 E0142256.50			left		K210-	RNP APCH	
TF	WK812	MATF	yes	N463436.18 E0144000.39	102° (106.1°)	12.2	right			RNP APCH	
DF	MOKEG	MAHF	yes	N463800.64 E0142256.50			left	A8000+		RNP APCH	
HM	MOKEG	MAHF	yes	N463800.64 E0142256.50	282° (286.2°)		right	A8000+	K230-	RNP APCH	
RNAV Holding											
Holding Point	Inbound Track ° True	Inbound Track ° MAG	Turn Direction	MAX IAS	Minimum Holding Altitude FT MSL / FL	Time	DIST NM	Remarks			
MOKEG	286.2°	282°	right	K230-	A8000	1 MIN					

**SBAS FAS Data Block Coding Table
Klagenfurt RNP RWY 28R**

Input data

Operation Type	0
SBAS Provider	1
Airport Identifier	LOWK
Runway	28
Runway Direction	1
Approach Performance Designator	0
Route Indicator	
Reference Path Data Selector	0
Reference Path Identifier	E28A
LTP/FTP Latitude	463820.7000N
LTP/FTP Longitude	0142117.2400E
LTP/FTP Ellipsoidal Height (metres)	488.0
FPAP Latitude	463845.2590N
Delta FPAP Latitude (seconds)	24.5590
FPAP Longitude	0141915.2055E
Delta FPAP Longitude (seconds)	-122.0345
Threshold Crossing Height	57.0
TCH Units Selector	0
Glidepath Angle (degrees)	3.00
Course Width (metres)	107.00
Length Offset (metres)	192
HAL (metres)	40.0
VAL (metres)	35.0

Output data

Data Block	10 0B 17 0F 0C 5C 00 00 01 38 32 05 38 EC 03 14 70 10 29 06 10 27 DE BF 00 9B 46 FC 3A 02 2C 01 6C 18 C8 AF 03 03 F6 69
Calculated CRC Value	0303F669

Required Additional Data

ICAO Code	LO
LTP/FTP Orthometric Height (metres)	440.0
FPAP Orthometric Height (metres)	440.0