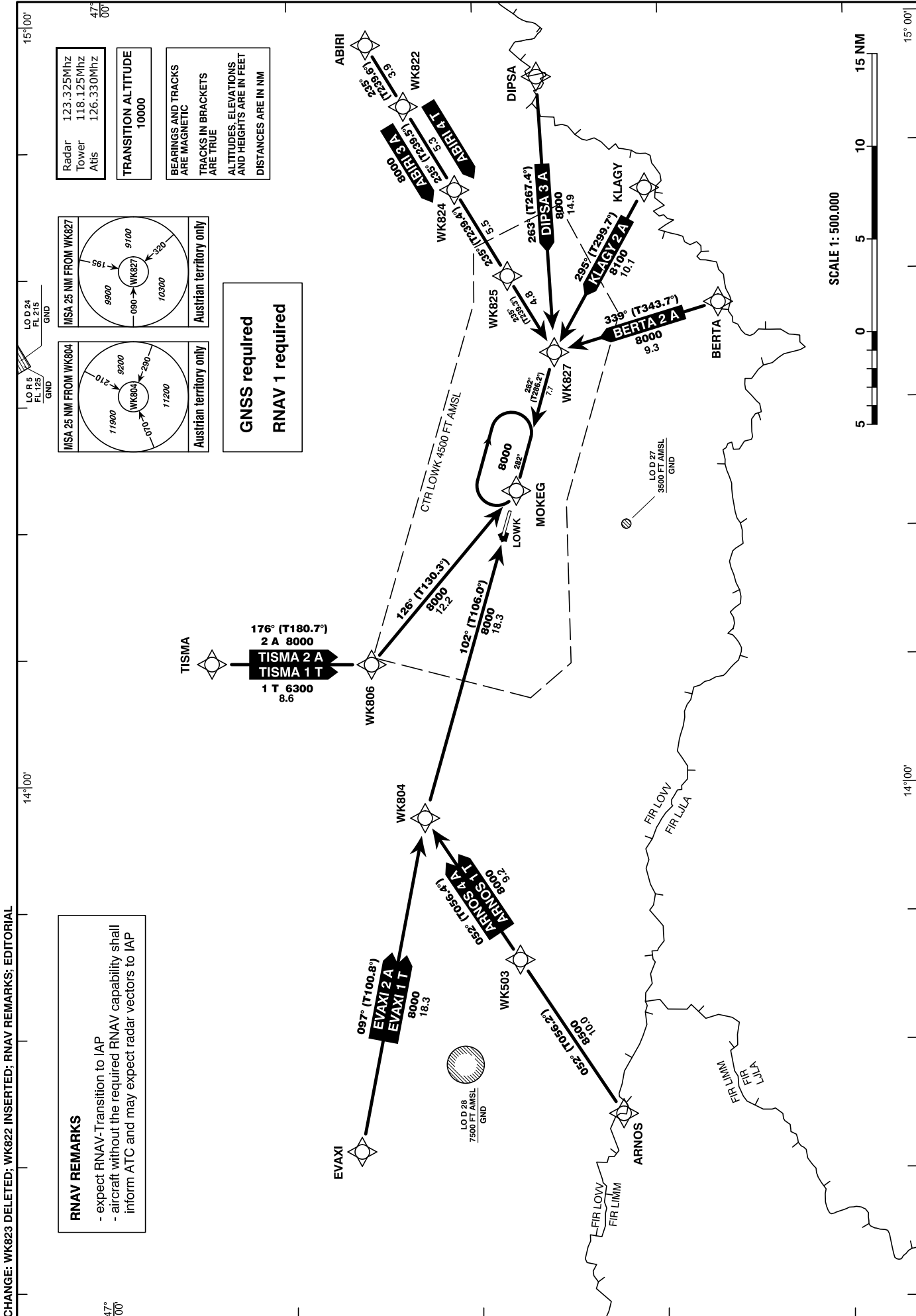


STANDARD ARRIVAL CHART - INSTRUMENT (STAR) - ICAO

VAR 4° E

KLAGENFURT
ÖSTERREICH AUSTRIA



Designator	Route	Remarks
ABIRI 3 A Abiri three alfa arrival	ABIRI - WK824 - WK827 - MOKEG	

RNAV STAR Coding Table of ABIRI 3 A

Path Terminator	Waypoint			Course/ Track ° MAG (° True)	DIST NM	Turn Direction	Constraints		Navigation Specification	Remarks
	Identifier	Flyover	Coordinates				Crossing ALT	Speed		
IF	ABIRI	no	N464545.01 E0145803.26				A9000+		RNAV 1	
TF	WK824	no	N464105.85 E0144634.65	235° (239.6°)	9.2		A8000+		RNAV 1	
TF	WK827	no	N463551.30 E0143344.35	235° (239.4°)	10.3		A8000+		RNAV 1	
TF	MOKEG	no	N463800.64 E0142256.50	282° (286.2°)	7.7	right	A8000+		RNAV 1	

Designator	Route	Remarks
ABIRI 4 T Abiri four tango arrival	ABIRI - WK822 - WK824 - WK825 - WK827	

RNAV STAR Coding Table of ABIRI 4 T

Path Terminator	Waypoint			Course/ Track ° MAG (° True)	DIST NM	Turn Direction	Constraints		Navigation Specification	Remarks
	Identifier	Flyover	Coordinates				Crossing ALT	Speed		
IF	ABIRI	no	N464545.01 E0145803.26				A9000+		RNAV 1	
TF	WK822	no	N464346.66 E0145310.72	235° (239.6°)	3.9		A8000+		RNAV 1	
TF	WK824	no	N464105.85 E0144634.65	235° (239.5°)	5.3		A6500+		RNAV 1	
TF	WK825	no	N463819.33 E0143946.10	235° (239.4°)	5.5		A5200+		RNAV 1	
TF	WK827	no	N463551.30 E0143344.35	235° (239.3°)	4.8		A4000+		RNAV 1	

Designator	Route	Remarks
ARNOS 4 A Arnos four alfa arrival	ARNOS - WK503 - WK804 - MOKEG	

RNAV STAR Coding Table of ARNOS 4 A

Path Terminator	Waypoint			Course/ Track ° MAG (° True)	DIST NM	Turn Direction	Constraints		Navigation Specification	Remarks
	Identifier	Flyover	Coordinates				Crossing ALT	Speed		
IF	ARNOS	no	N463228.52 E0133409.52				A11500+		RNAV 1	
TF	WK503	no	N463801.48 E0134613.10	052° (056.2°)	10.0		A8500+		RNAV 1	
TF	WK804	no	N464306.83 E0135721.35	052° (056.4°)	9.2		A8000+		RNAV 1	
TF	MOKEG	no	N463800.64 E0142256.50	102° (106.0°)	18.3	right	A8000+		RNAV 1	

Designator	Route	Remarks
ARNOS 1 T Arnos one tango arrival	ARNOS - WK503 - WK804	

RNAV STAR Coding Table of ARNOS 1 T

Path Terminator	Waypoint			Course/Track ° MAG (° True)	DIST NM	Turn Direction	Constraints		Navigation Specification	Remarks
	Identifier	Flyover	Coordinates				Crossing ALT	Speed		
IF	ARNOS	no	N463228.52 E0133409.52				A11500+		RNAV 1	
TF	WK503	no	N463801.48 E0134613.10	052° (056.2°)	10.0		A8500+		RNAV 1	
TF	WK804	no	N464306.83 E0135721.35	052° (056.4°)	9.2		A8000+		RNAV 1	

Designator	Route	Remarks
BERTA 2 A Berta two alfa arrival	BERTA - WK827 - MOKEG	

RNAV STAR Coding Table of BERTA 2 A

Path Terminator	Waypoint			Course/Track ° MAG (° True)	DIST NM	Turn Direction	Constraints		Navigation Specification	Remarks
	Identifier	Flyover	Coordinates				Crossing ALT	Speed		
IF	BERTA	no	N462658.95 E0143730.85				A10000+		RNAV 1	
TF	WK827	no	N463551.30 E0143344.35	339° (343.7°)	9.3		A8000+		RNAV 1	
TF	MOKEG	no	N463800.64 E0142256.50	282° (286.2°)	7.7	left	A8000+		RNAV 1	

Designator	Route	Remarks
DIPSA 3 A Dipsa three alfa arrival	DIPSA - WK827 - MOKEG	

RNAV STAR Coding Table of DIPSA 3 A

Path Terminator	Waypoint			Course/Track ° MAG (° True)	DIST NM	Turn Direction	Constraints		Navigation Specification	Remarks
	Identifier	Flyover	Coordinates				Crossing ALT	Speed		
IF	DIPSA	no	N463634.58 E0145520.08				A9000+		RNAV 1	
TF	WK827	no	N463551.30 E0143344.35	263° (267.4°)	14.9		A8000+		RNAV 1	
TF	MOKEG	no	N463800.64 E0142256.50	282° (286.2°)	7.7	right	A8000+		RNAV 1	

For Flight Simulation and non commercial use only !
Courtesy of Austro Control GmbH
vacc AUSTRIA

Designator	Route	Remarks
EVAXI 2 A Evaxi two alfa arrival	EVAXI - WK804 - MOKEG	

RNAV STAR Coding Table of EVAXI 2 A

Path Terminator	Waypoint			Course/ Track ° MAG (° True)	DIST NM	Turn Direction	Constraints		Navigation Specification	Remarks
	Identifier	Flyover	Coordinates				Crossing ALT	Speed		
IF	EVAXI	no	N464636.00 E0133111.00				A15000+		RNAV 1	
TF	WK804	no	N464306.83 E0135721.35	097° (100.8°)	18.3		A8000+		RNAV 1	
TF	MOKEG	no	N463800.64 E0142256.50	102° (106.0°)	18.3	right	A8000+		RNAV 1	

Designator	Route	Remarks
EVAXI 1 T Evaxi one tango arrival	EVAXI - WK804	

RNAV STAR Coding Table of EVAXI 1 T

Path Terminator	Waypoint			Course/ Track ° MAG (° True)	DIST NM	Turn Direction	Constraints		Navigation Specification	Remarks
	Identifier	Flyover	Coordinates				Crossing ALT	Speed		
IF	EVAXI	no	N464636.00 E0133111.00				A15000+		RNAV 1	
TF	WK804	no	N464306.83 E0135721.35	097° (100.8°)	18.3		A8000+		RNAV 1	

Designator	Route	Remarks
KLAGY 2 A Klagy two alfa arrival	KLAGY - WK827 - MOKEG	

RNAV STAR Coding Table of KLAGY 2 A

Path Terminator	Waypoint			Course/ Track ° MAG (° True)	DIST NM	Turn Direction	Constraints		Navigation Specification	Remarks
	Identifier	Flyover	Coordinates				Crossing ALT	Speed		
IF	KLAGY	no	N463051.48 E0144630.61				A10000+		RNAV 1	
TF	WK827	no	N463551.30 E0143344.35	295° (299.7°)	10.1		A8100+		RNAV 1	
TF	MOKEG	no	N463800.64 E0142256.50	282° (286.2°)	7.7	left	A8000+		RNAV 1	

Designator	Route	Remarks
TISMA 2 A Tisma two alfa arrival	TISMA - WK806 - MOKEG	

RNAV STAR Coding Table of TISMA 2 A

Path Terminator	Waypoint			Course/ Track ° MAG (° True)	DIST NM	Turn Direction	Constraints		Navigation Specification	Remarks
	Identifier	Flyover	Coordinates				Crossing ALT	Speed		
IF	TISMA	no	N465431.73 E0140934.66				A12000+		RNAV 1	
TF	WK806	no	N464555.48 E0140926.00	176° (180.7°)	8.6	right	A8000+		RNAV 1	
TF	MOKEG	no	N463800.64 E0142256.50	126° (130.3°)	12.2	left	A8000+		RNAV 1	

Designator	Route	Remarks
TISMA 1 T Tisma one tango arrival	TISMA - WK806	

RNAV STAR Coding Table of TISMA 1 T

Path Terminator	Waypoint			Course/ Track ° MAG (° True)	DIST NM	Turn Direction	Constraints		Navigation Specification	Remarks
	Identifier	Flyover	Coordinates				Crossing ALT	Speed		
IF	TISMA	no	N465431.73 E0140934.66				A10000+		RNAV 1	
TF	WK806	no	N464555.48 E0140926.00	176° (180.7°)	8.6		A6300+		RNAV 1	

RNAV Holding

Holding Point	Inbound Track ° True	Inbound Track ° MAG	Turn Direction	MAX IAS	Minimum Holding Altitude FT MSL / FL	Time	DIST NM	Remarks
MOKEG	286.2°	282°	right	K230-	A8000	1 MIN		