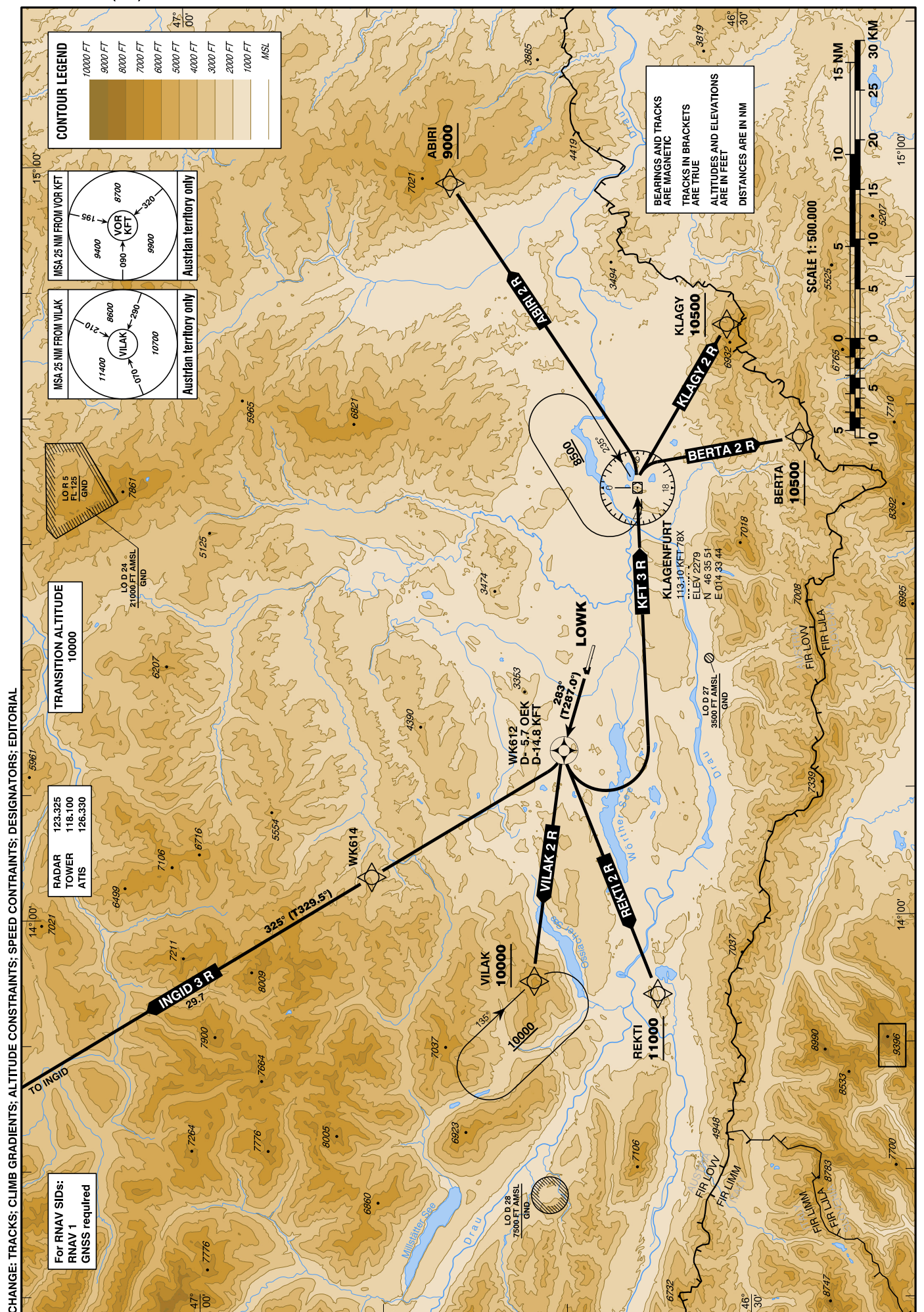


STANDARD DEPARTURE CHART - INSTRUMENT (SID) - ICAO

VAR 4°E

KLAGENFURT RWY 28R

KLAGENFURT (LOWK)
 ÖSTERREICH AUSTRIA



For noise abatement reasons departing ACFT should use RWY 10L whenever possible!
To expedite traffic, ATC may request aircraft to start the initial turn with visual reference to terrain when passing 3000 FT AMSL. In this case terrain clearance has to be assured by the pilot until passing 6500 FT AMSL.

Designator	Route	After Take-Off		Remarks
		Climb to ..initially	Expect FREQ	
ABIRI 2 R Abiri two romeo departure	Climb on track 283° to WK612 - KFT - ABIRI	By ATC	KLAGENFURT RADAR 123.325	Climb gradient at least 6.8% (415 FT/NM) until passing 3000 FT AMSL, thereafter at least 5.5% (335 FT/NM).

Contact KLAGENFURT RADAR when advised by Tower

Coding Table of ABIRI 2 R

Path Terminator	Waypoint			Course/ Track ° MAG (° True)	DIST NM	Turn Direction	Constraints		Navigation Specification	Remarks
	Identifier	Flyover	Coordinates				Level FT	Speed KT		
CF	WK612	yes	N464002.91 E0141305.71	283° (287.0°)					RNAV 1	
DF	KFT	yes	N463551.31 E0143344.36			left		250-	RNAV 1	
DF	ABIRI	no	N464545.01 E0145803.26			left	A9000+		RNAV 1	

Designator	Route	After Take-Off		Remarks
		Climb to ..initially	Expect FREQ	
BERTA 2 R Berta two romeo departure	Climb on track 283° to WK612 - KFT - BERTA	By ATC	KLAGENFURT RADAR 123.325	Climb gradient at least 6.8% (415 FT/NM) until passing 3000 FT AMSL, thereafter at least 5.5% (335 FT/NM).

Contact KLAGENFURT RADAR when advised by Tower

Coding Table of BERTA 2 R

Path Terminator	Waypoint			Course/ Track ° MAG (° True)	DIST NM	Turn Direction	Constraints		Navigation Specification	Remarks
	Identifier	Flyover	Coordinates				Level FT	Speed KT		
CF	WK612	yes	N464002.91 E0141305.71	283° (287.0°)					RNAV 1	
DF	KFT	yes	N463551.31 E0143344.36			left			RNAV 1	
DF	BERTA	no	N462658.95 E0143730.85			right	A10500+	250-	RNAV 1	

**STANDARD DEPARTURE ROUTES - INSTRUMENT
SID's**

**KLAGENFURT
RWY 28R**

For noise abatement reasons departing ACFT should use RWY 10L whenever possible!
To expedite traffic, ATC may request aircraft to start the initial turn with visual reference to terrain when passing 3000 FT AMSL. In this case terrain clearance has to be assured by the pilot until passing 6500 FT AMSL.

Designator	Route	After Take-Off		Remarks
		Climb to ..initially	Expect FREQ	
INGID 3 R Ingid three romeo departure	Climb on track 283° to WK612 - WK614 - INGID	By ATC	KLAGENFURT RADAR 123.325	Climb gradient at least 6.8% (415 FT/NM) until passing 10000 FT AMSL, thereafter at least 3.3% (205 FT/NM).

Contact KLAGENFURT RADAR when advised by Tower

Coding Table of INGID 3 R

Path Terminator	Waypoint			Course/ Track ° MAG (° True)	DIST NM	Turn Direction	Constraints		Navigation Specification	Remarks
	Identifier	Flyover	Coordinates				Level FT	Speed KT		
CF	WK612	yes	N464002.91 E0141305.71	283° (287.0°)					RNAV 1	
DF	WK614	no	N465034.15 E0140313.63			right			RNAV 1	
TF	INGID	no	N471606.73 E0134106.67	325° (329.5°)	29.7	left	A11500+		RNAV 1	

Designator	Route	After Take-Off		Remarks
		Climb to ..initially	Expect FREQ	
KFT 3 R Klagenfurt three romeo departure	Climb on track 283° until passing D-5.7 OEK/D-14.8 KFT, turn LEFT and proceed inbound to VOR/DME KFT, enter the holding	By ATC	KLAGENFURT RADAR 123.325	Only available for 1. NON-RNAV equipped aircraft, 2. IFR training flights, 3. Aircraft unable to comply with the prescribed climb gradient of other departure routes. Climb gradient at least 6.8% (415 FT/NM) until passing 3000 FT AMSL, thereafter 5.8% (355 FT/NM). Do not enter the holding below 8500 FT AMSL. MAX IAS 250 KT until turn completed.

Contact KLAGENFURT RADAR when advised by Tower

Designator	Route	After Take-Off		Remarks
		Climb to ..initially	Expect FREQ	
KLAGY 2 R Klagy two romeo departure	Climb on track 283° to WK612 - KFT - KLAGY	By ATC	KLAGENFURT RADAR 123.325	Climb gradient at least 6.8% (415 FT/NM) until passing 3000 FT AMSL, thereafter at least 5.5% (335 FT/NM).

Contact KLAGENFURT RADAR when advised by Tower

Coding Table of KLAGY 2 R

Path Terminator	Waypoint			Course/ Track ° MAG (° True)	DIST NM	Turn Direction	Constraints		Navigation Specification	Remarks
	Identifier	Flyover	Coordinates				Level FT	Speed KT		
CF	WK612	yes	N464002.91 E0141305.71	283° (287.0°)					RNAV 1	
DF	KFT	yes	N463551.31 E0143344.36			left		250-	RNAV 1	
DF	KLAGY	no	N463051.48 E0144630.61			right	A10500+		RNAV 1	

For Flight Simulation and non commercial use only!
Courtesy of Austro Control GmbH
VACC Austria

**STANDARD DEPARTURE ROUTES - INSTRUMENT
SID's**

**KLAGENFURT
RWY 28R**

For noise abatement reasons departing ACFT should use RWY 10L whenever possible!
To expedite traffic, ATC may request aircraft to start the initial turn with visual reference to terrain when passing 3000 FT AMSL. In this case terrain clearance has to be assured by the pilot until passing 6500 FT AMSL.

Designator	Route	After Take-Off		Remarks
		Climb to ..initially	Expect FREQ	
REKTI 2 R Rekti two romeo departure	Climb on track 283° to WK612 - REKTI	By ATC	KLAGENFURT RADAR 123.325	Climb gradient at least 8.5% (520 FT/NM).

Contact KLAGENFURT RADAR when advised by Tower

Coding Table of REKTI 2 R

Path Terminator	Waypoint			Course/ Track ° MAG (° True)	DIST NM	Turn Direction	Constraints		Navigation Specification	Remarks
	Identifier	Flyover	Coordinates				Level FT	Speed KT		
CF	WK612	yes	N464002.91 E0141305.71	283° (287.0°)					RNAV 1	
DF	REKTI	no	N463504.34 E0135350.81			left	A11000+		RNAV 1	

Designator	Route	After Take-Off		Remarks
		Climb to ..initially	Expect FREQ	
VILAK 2 R Vilak two romeo departure	Climb on track 283° to WK612 - VILAK	By ATC	KLAGENFURT RADAR 123.325	Climb gradient at least 8.2% (500 FT/NM).

Contact KLAGENFURT RADAR when advised by Tower

Coding Table of VILAK 2 R

Path Terminator	Waypoint			Course/ Track ° MAG (° True)	DIST NM	Turn Direction	Constraints		Navigation Specification	Remarks
	Identifier	Flyover	Coordinates				Level FT	Speed KT		
CF	WK612	yes	N464002.91 E0141305.71	283° (287.0°)					RNAV 1	
DF	VILAK	no	N464147.01 E0135452.72				A10000+		RNAV 1	

PBN Holding

Holding Point	Inbound Track ° True	Inbound Track ° MAG	Turn Direction	Speed KT	Holding Altitude FT AMSL / FL		Time	DIST NM	Remarks
					MNM	MAX			
VILAK	139.4°	135°	right	230-	A10000	FL140	1 MIN		
				NIL	FL150	FL660	1.5 MIN		