

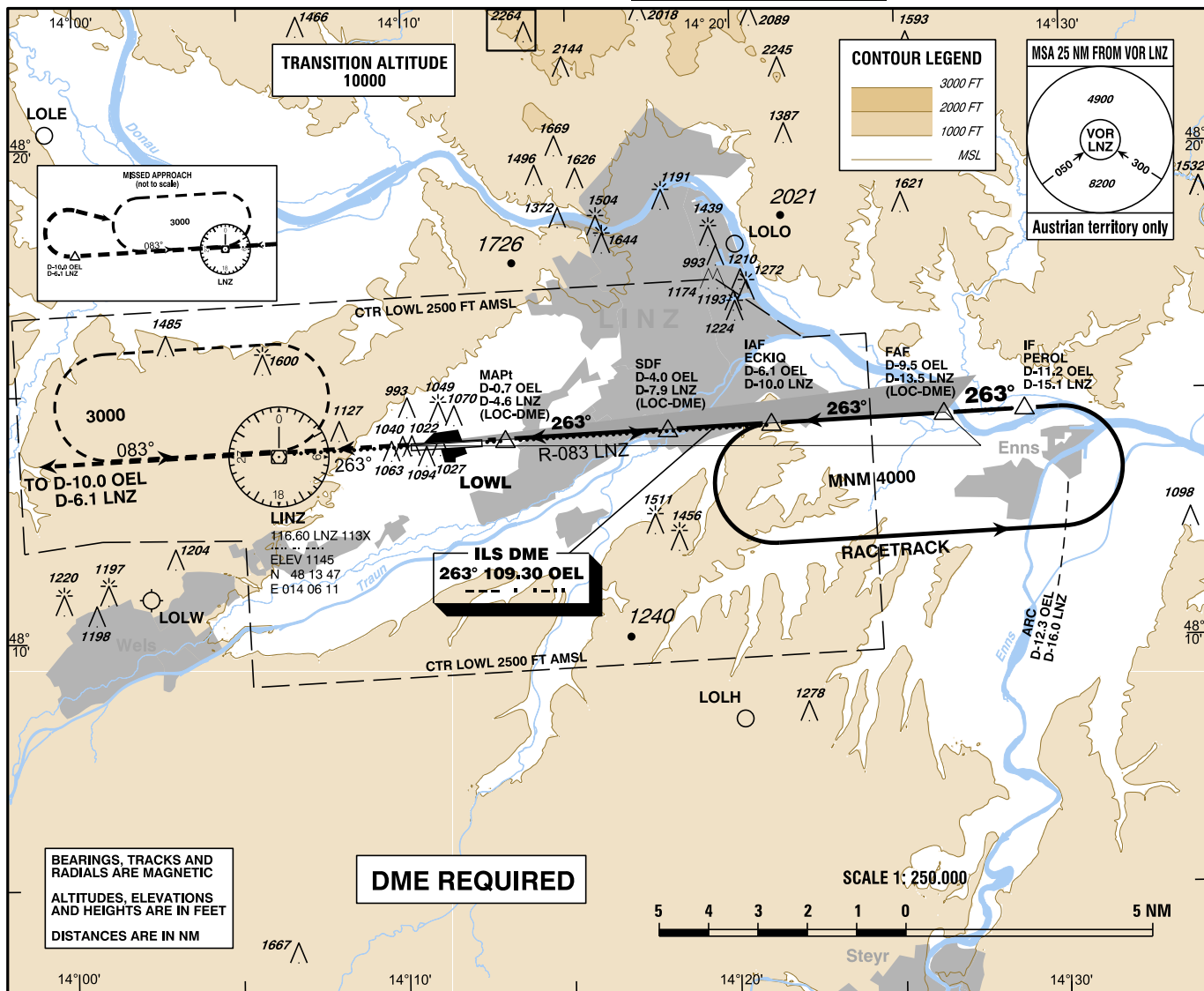
INSTRUMENT APPROACH CHART - ICAO

VAR 4° E

AD ELEV 980 FT
THR 26 ELEV 963 FT
HGT RELATED TO THR ELEV
CIRCLING HGT RELATED TO AD ELEV

Radar 125.685Mhz
Tower 118.800Mhz
Atis 128.130Mhz

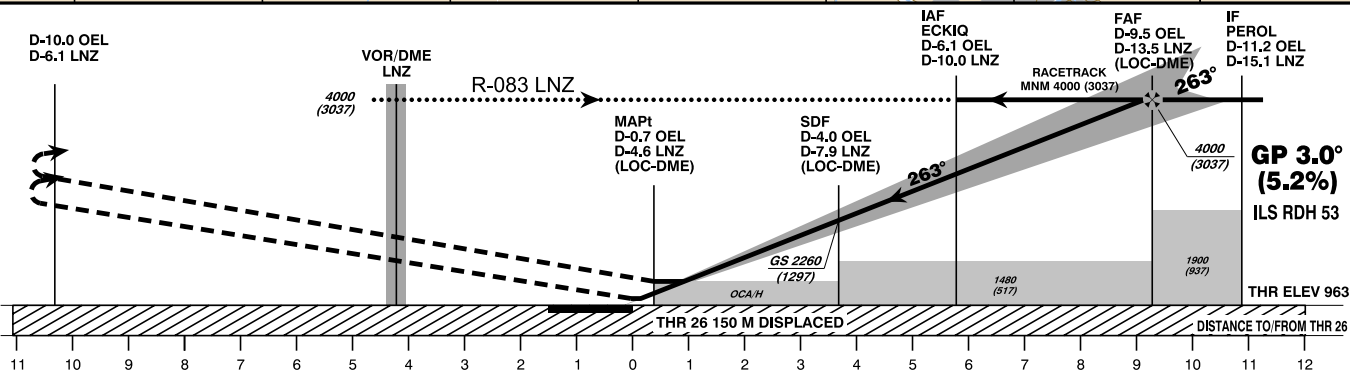
L I N Z (LOWL)
ÖSTERREICH AUSTRIA
ILS CAT II & III or LOC RWY 26



BEARINGS, TRACKS AND RADIALS ARE MAGNETIC
ALTITUDES, ELEVATIONS AND HEIGHTS ARE IN FEET
DISTANCES ARE IN NM

DME REQUIRED

SCALE 1:250,000



MISSED APPROACH: CLIMB STRAIGHT AHEAD, AT D-10.0 OEL (D-6.1 LNZ) TURN RIGHT TO VOR/DME LNZ; CLIMB TO 3000 FT AMSL AND HOLD.

| OCA (OCH) IN FT | | | | | D-9.5 OEL to THR 26 - DISTANCE 9.4 NM (Timing not authorized for defining the MAPt) | | | | | | | | | | |
|---|---------------------|------------|------------|--------------------|--|--------------------|------------------------|-------------|-------------|-------------|-------------|------------|------------|-----|-----|
| | A | B | C | D / D _L | | GS (KT) | 80 | 100 | 120 | 140 | 160 | 180 | | | |
| STRAIGHT-IN APPROACH | CAT I Press. Altim. | 1115 (152) | 1128 (165) | 1136 (173) | 1146 (183) | D-9.5 OEL - THR 26 | MIN : SEC | 7:02 | 5:37 | 4:41 | 4:01 | 3:31 | 3:07 | | |
| | CAT II RDO Altim. | 1027 (64) | 1045 (82) | 1056 (93) | 1071 (108) | | Rate of descent (5.2%) | FT / MIN | 420 | 530 | 640 | 740 | 850 | 960 | |
| | CAT III | APPROVED | | | | CIRCLING | DME OEL | 9 | 8 | 7 | 6 | 5 | 4 | 3 | 2 |
| | LOC-DME | 1300 (337) | | | | | DIST THR | 8.8 | 7.8 | 6.8 | 5.8 | 4.8 | 3.8 | 2.8 | 1.8 |
| CIRCLING NOT AUTHORIZED NORTH OF THE AD | | | | | ALT (HEIGHT) | 3830 (2867) | 3510 (2547) | 3190 (2227) | 2870 (1907) | 2560 (1597) | 2240 (1277) | 1920 (953) | 1600 (637) | | |