

For Flight Simulation and non commercial use only!

Courtesy of Austro Control GmbH

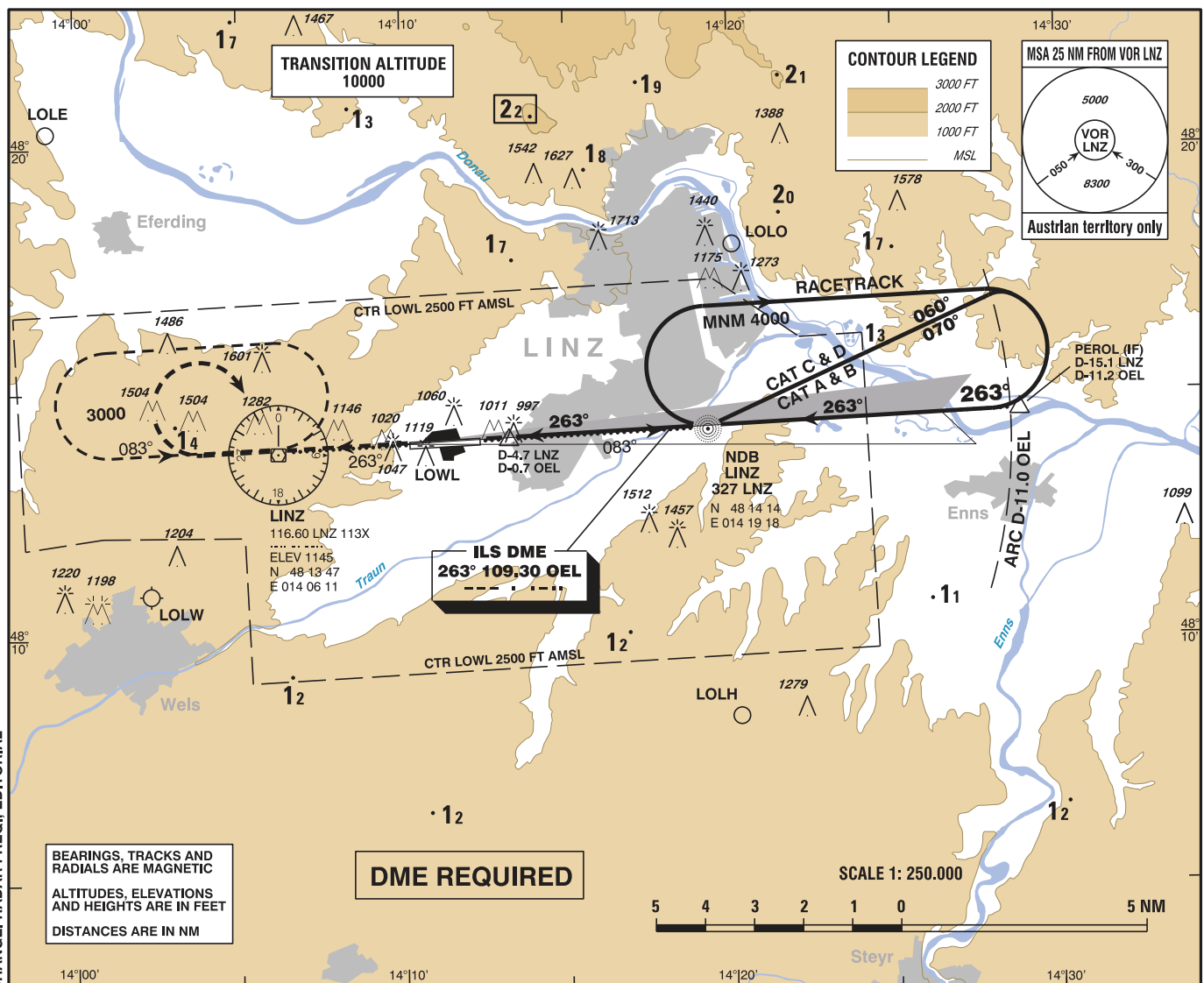
INSTRUMENT APPROACH CHART - ICAO

VAR 4° E

AD ELEV 980 FT
 THR 26 ELEV 963 FT
 HGT RELATED TO THR ELEV
 CIRCLING HGT RELATED TO AD ELEV

Center 129.200Mhz, 134.350Mhz, 133.800Mhz
 Radar 129.620Mhz
 Tower 118.800Mhz
 Atis 128.120Mhz

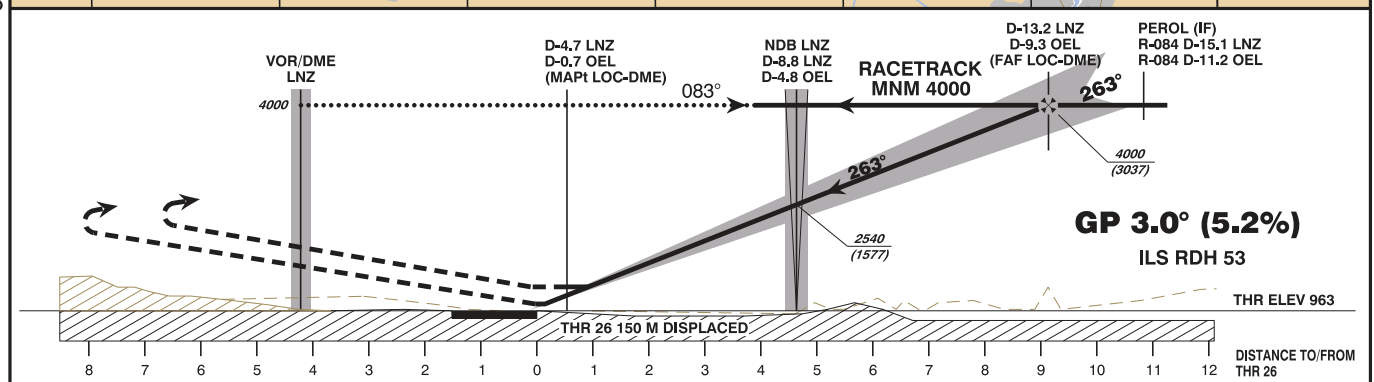
L I N Z
 ÖSTERREICH AUSTRIA
 ILS CAT II & III or LOC RWY 26



BEARINGS, TRACKS AND RADIALS ARE MAGNETIC
 ALTITUDES, ELEVATIONS AND HEIGHTS ARE IN FEET
 DISTANCES ARE IN NM

DME REQUIRED

SCALE 1: 250.000



MISSED APPROACH: CLIMB STRAIGHT AHEAD, WHEN PASSING 3000 FT AMSL TURN RIGHT TO VOR/DME LNZ AND HOLD. DO NOT TURN BEFORE PASSING VOR/DME LNZ.

OCA (OCH) IN FT					NDB LNZ to THR 26 - DISTANCE 4.7 NM (Timing not authorized for defining the MAPt)								
	A	B	C	D / D _L	GS (KT)	80	100	120	140	160	180		
STRAIGHT-IN APPROACH	CAT I Press. Altim.	1119 (156)	1131 (168)	1139 (176)	1150 (187)	NDB LNZ - THR 26	MIN : SEC	3:32	2:49	2:21	2:01	1:46	1:34
	CAT II RDO Altim.	1032 (69)	1049 (86)	1061 (98)	1075 (112)		Rate of descent (5.2%)	FT / MIN	430	530	640	750	850
	CAT III B LOC-DME	APPROVED 1280 (320)											
CIRCLING	1480 (500)	1530 (550)	1910 (930)	1910 (930)									
CIRCLING NOT AUTHORIZED NORTH OF THE AD													
	DME OEL	9	8	7	6	5	4	3	2				
	DIST THR	8.8	7.8	6.8	5.8	4.8	3.8	2.8	1.8				
	ALT (HEIGHT)	3900 (2937)	3570 (2607)	3240 (2277)	2910 (1947)	2580 (1617)	2250 (1287)	1930 (967)	1600 (637)				

vacc AUSTRIA