

For Flight Simulation and non commercial use only !

Courtesy of Austro Control GmbH

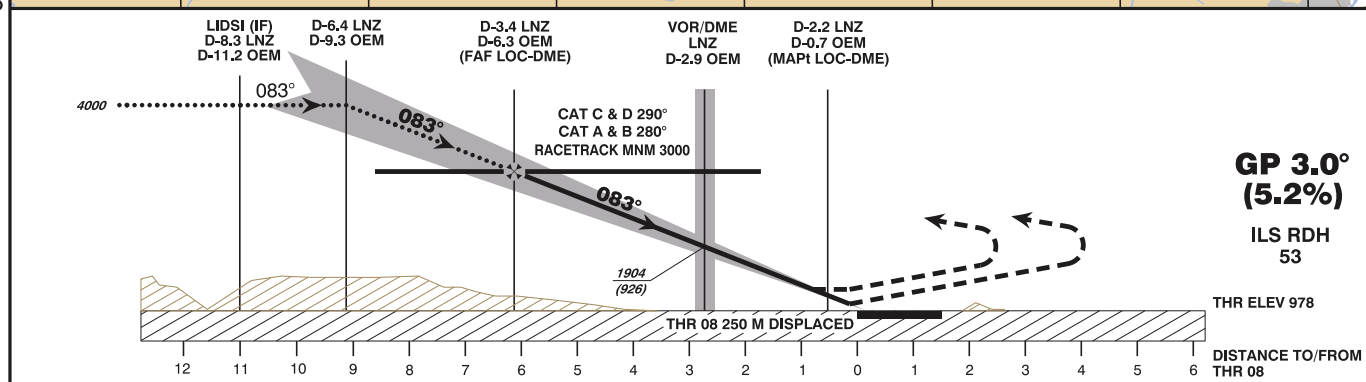
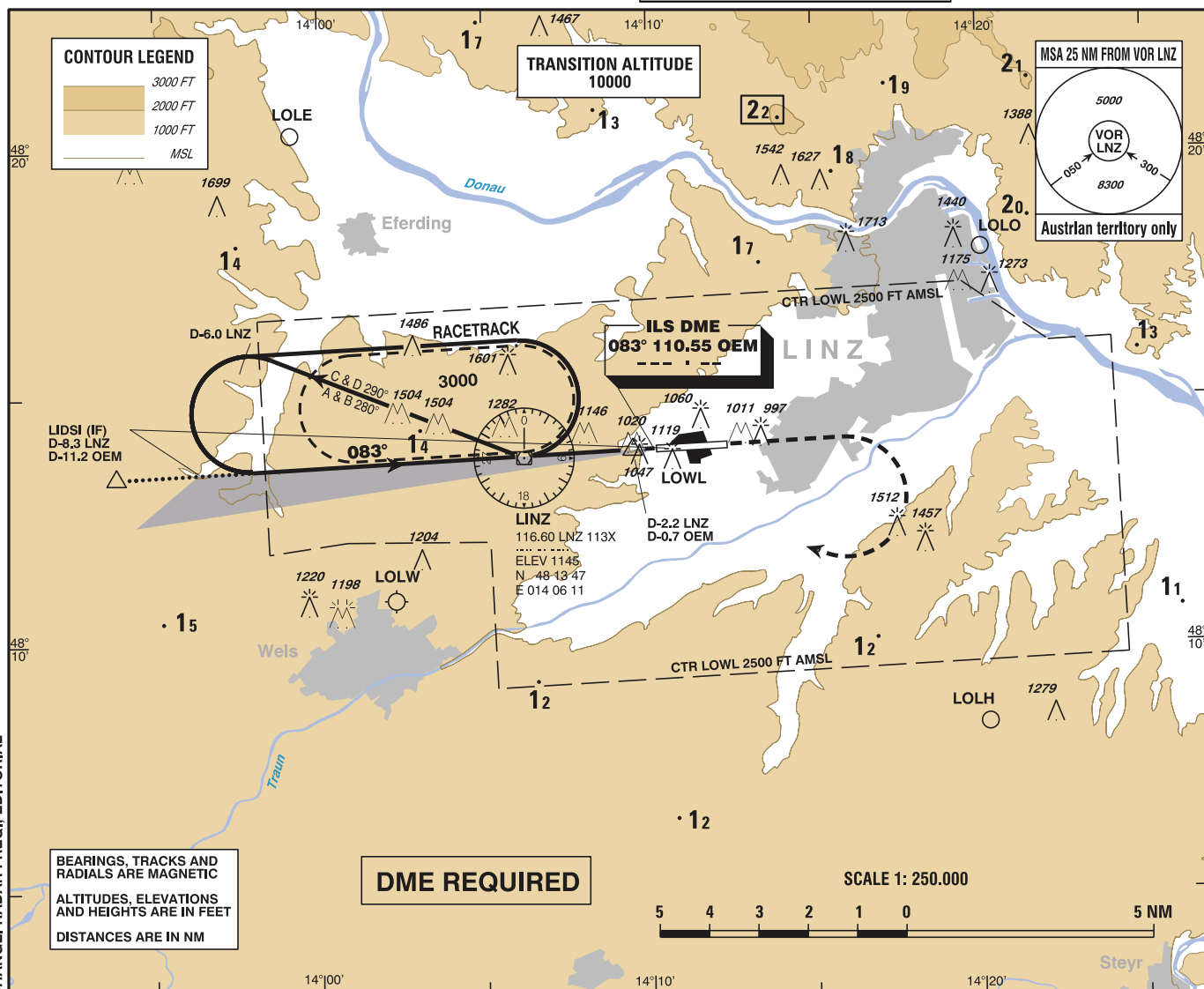
INSTRUMENT APPROACH CHART - ICAO

VAR 4° E

AD ELEV 980 FT
 THR 08 ELEV 978 FT
 HGT RELATED TO THR ELEV
 CIRCLING HGT RELATED TO AD ELEV

Center 129.200Mhz, 134.350Mhz, 133.800Mhz
 Radar 129.620Mhz
 Tower 118.800Mhz
 Atis 128.120Mhz

LINZ
 ÖSTERREICH AUSTRIA
 ILS or LOC RWY 08



MISSED APPROACH: CLIMB STRAIGHT AHEAD, WHEN PASSING 3000 FT AMSL TURN RIGHT TO VOR/DME LNZ; CONTINUE CLIMB TO 4000 FT AMSL AND HOLD.

OCA (OCH) IN FT					D-6.3 OEM to THR 08 - DISTANCE 6.1 NM (Timing not authorized for defining the MAPt)								
STRAIGHT-IN APPROACH	CAT I Press. Altim.	A	B	C	D / D _L	D-6.3 OEM - THR 08	GS (KT)	80	100	120	140	160	180
		LOC-DME		1480 (510)				MIN : SEC	4:35	3:40	3:03	2:37	2:17
CIRCLING					Rate of descent (5.2%)	FT / MIN	430	540	650	750	860	970	
CIRCLING NOT AUTHORIZED NORTH OF THE AD													

DME OEM	6	5	4	3	2
DIST THR	5.8	4.8	3.8	2.8	1.8
ALT (HEIGHT)	2920 (1942)	2590 (1612)	2270 (1292)	1940 (962)	1620 (642)

vacc
AUSTRIA

CHANGE: RADAR FREQ.; EDITORIAL