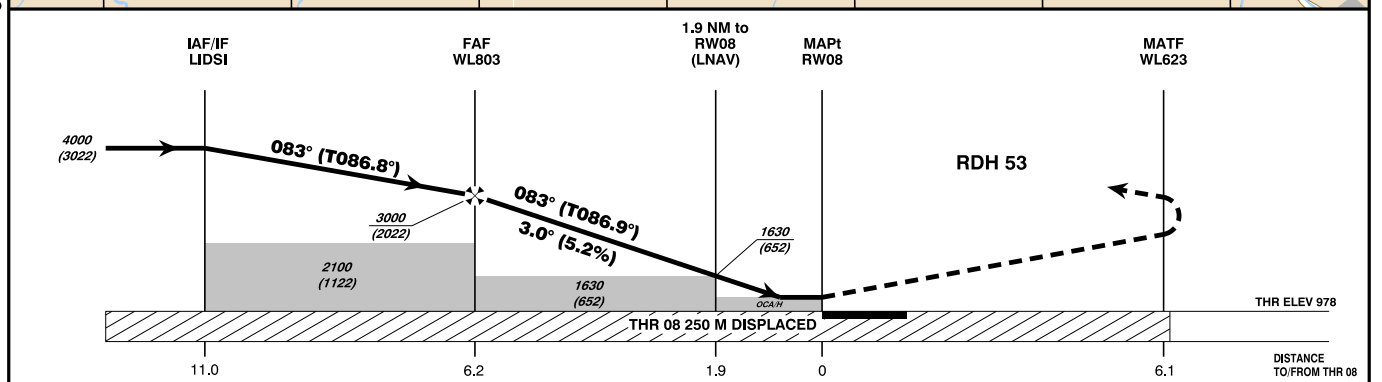
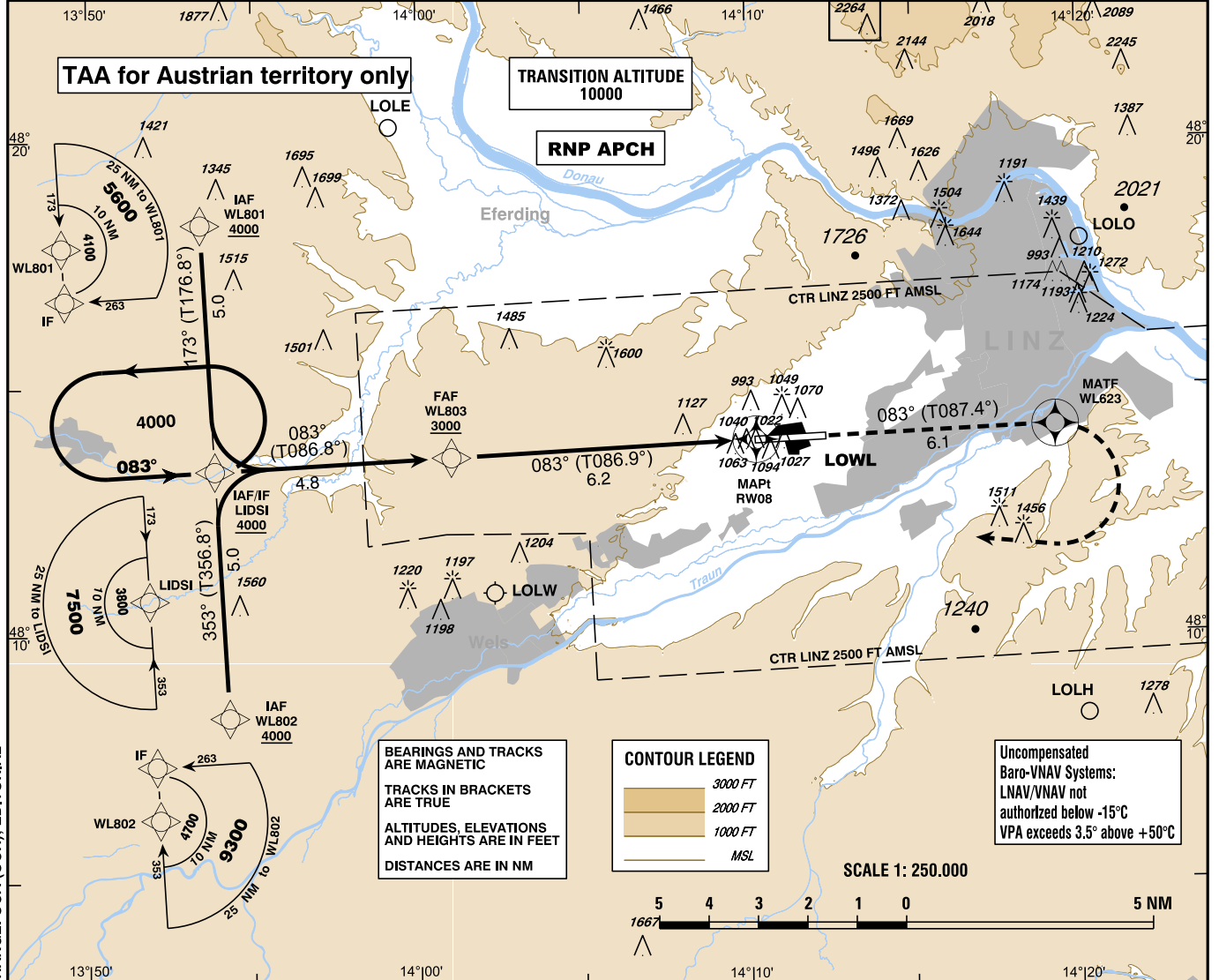


For Flight Simulation and non commercial use only !

Courtesy of Austro Control GmbH

**INSTRUMENT APPROACH CHART - ICAO**      VAR 4° E      AD ELEV 980 FT      THR 08 ELEV 978 FT      HGT RELATED TO THR ELEV      CIRCLING HGT RELATED TO AD ELEV      Radar 125.685Mhz      Tower 118.800Mhz      Atis 128.130Mhz      EGNOS CH 41180 E08A      **L I N Z (LOWL)**      ÖSTERREICH AUSTRIA      RNP RWY 08



**MISSED APPROACH : CLIMB STRAIGHT AHEAD TO WL623, THEN TURN RIGHT DIRECT TO LIDS1; CLIMB TO 4000 FT AMSL AND HOLD.**

OCA (OCH) IN FT	A	B	C	D / D <sub>L</sub>
LNAV	1440 (470)			
LNAV/VNAV	1231 (253)	1243 (265)	1251 (273)	1261 (283)
LPV	1118 (140)	1131 (153)	1139 (161)	1149 (171)
CIRCLING	1470 (490)	1550 (570)	1930 (950)	
CIRCLING NOT AUTHORIZED NORTH OF THE AD				

WL803 to RW08 - DISTANCE 6.2 NM							
(Timing not authorized for defining the MAPt)							
GS (KT)	80	100	120	140	160	180	
WL803 - RW08	MIN : SEC	4:39	3:43	3:06	2:39	2:20	2:04
Rate of descent (5.2%)	FT / MIN	420	530	640	740	850	960

DIST in NM to RW08	6	5	4	3	2
ALTITUDE (HEIGHT)	2940 (1962)	2620 (1642)	2310 (1332)	1990 (1012)	1670 (692)

vacc AUSTRIA

**Instrument Approach Procedure Coding Table  
Linz RNP RWY 08**

Path Terminator	Waypoint				Course/Track ° MAG (° True)	DIST NM	Turn Direction	Constraints		Navigation Specification	Remarks
	Identifier	Type	Flyover	Coordinates				Level	Speed		
IF	WL801	IAF	no	N481821.60 E0135325.41				A4000+		RNP APCH	
IF	WL802	IAF	no	N480822.76 E0135415.10				A4000+		RNP APCH	
IF / TF	LIDSI	IAF / IF	no	N481322.19 E0135350.30	353° (356.8°) 173° (176.8°)	5.0		A4000+		RNP APCH	
TF	WL803	FAF	no	N481337.91 E0140100.50	083° (086.8°)	4.8	right left	A3000+		RNP APCH	
TF	RW08	MAPt	yes	N481357.49 E0141014.51	083° (086.9°)	6.2				RNP APCH	
TF	WL623	MATF	yes	N481413.56 E0141918.42	083° (087.4°)	6.1				RNP APCH	
DF	LIDSI	MAHF	yes	N481322.19 E0135350.30			right	A4000+		RNP APCH	
<b>RNAV Holding</b>											
Holding Point	Inbound Track ° True	Inbound Track ° MAG	Turn Direction	MAX IAS	Minimum Holding Altitude FT MSL / FL	Time	DIST NM	Remarks			
LIDSI	086.8°	083°	left		A4000	1 MIN					

For Flight Simulation and non commercial use only!  
Courtesy of Austro Control GmbH



**SBAS FAS Data Block Coding Table  
Linz RNP RWY 08**

**Input data**

Operation Type	0
SBAS Provider	1
Airport Identifier	LOWL
Runway	08
Runway Direction	0
Approach Performance Designator	0
Route Indicator	
Reference Path Data Selector	0
Reference Path Identifier	E08A
LTP/FTP Latitude	481357.5000N
LTP/FTP Longitude	0141014.6700E
LTP/FTP Ellipsoidal Height (metres)	343.2
FPAP Latitude	481402.6110N
Delta FPAP Latitude (seconds)	5.1110
FPAP Longitude	0141242.8290E
Delta FPAP Longitude (seconds)	148.1590
Threshold Crossing Height	53.0
TCH Units Selector	0
Glidepath Angle (degrees)	3.00
Course Width (metres)	107.00
Length Offset (metres)	472
HAL (metres)	40.0
VAL (metres)	35.0

**Output data**

Data Block	10 0C 17 0F 0C 08 00 00 01 38 30 05 F8 FE B2 14 1C D8 14 06 68 21 EE 27 00 7E 85 04 12 02 2C 01 6C 3B C8 AF 8F D9 8B 79
Calculated CRC Value	8FD98B79

**Required Additional Data**

ICAO Code	LO
LTP/FTP Orthometric Height (metres)	298.2
FPAP Orthometric Height (metres)	298.2