

For Flight Simulation and non commercial use only !

Courtesy of Austro Control GmbH

**INSTRUMENT
APPROACH
CHART - ICAO**

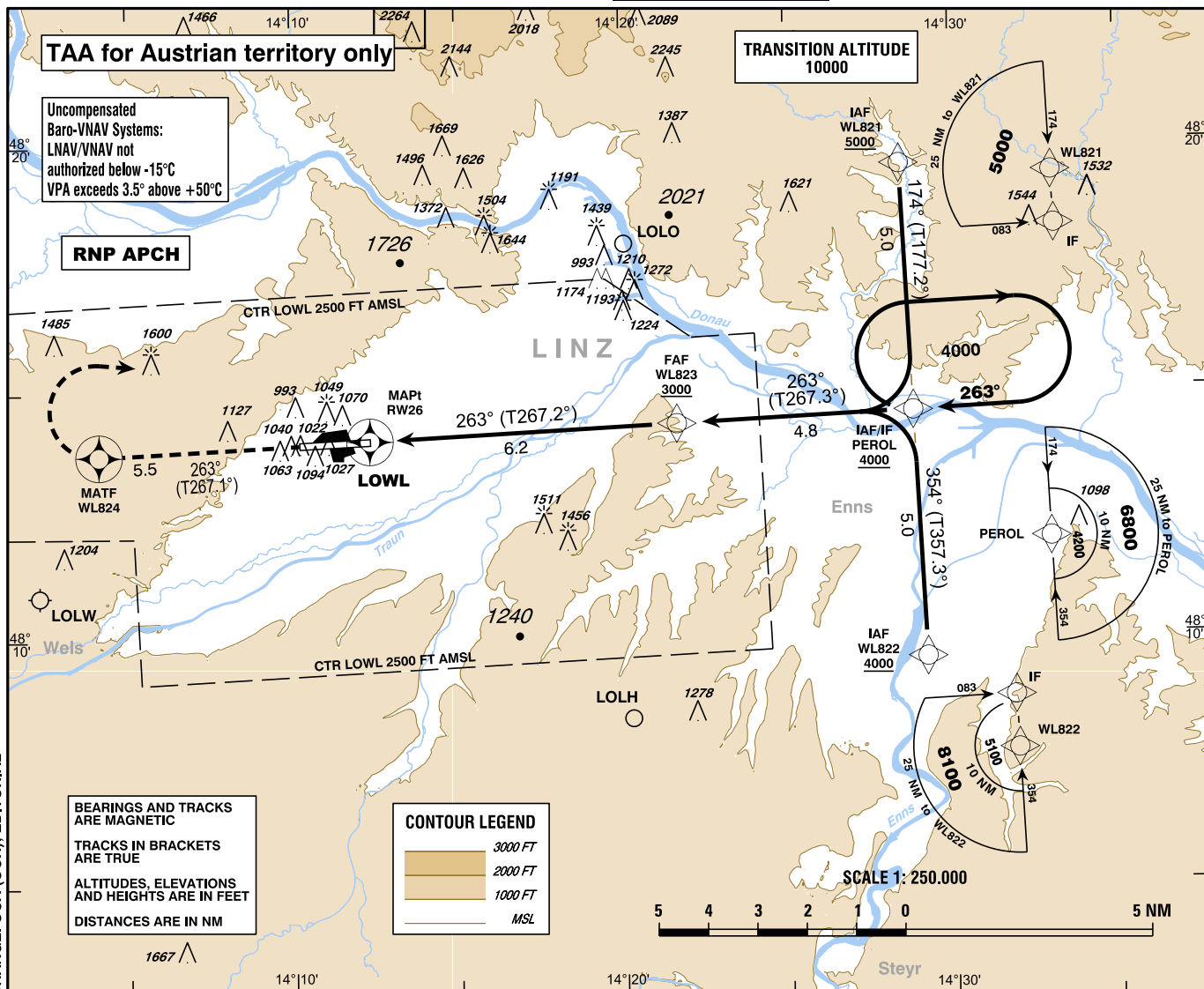
VAR 4° E

AD ELEV 980 FT
THR 26 ELEV 963 FT
HGT RELATED TO THR ELEV
CIRCLING HGT RELATED TO AD ELEV

Radar 125.685Mhz
Tower 118.800Mhz
Atis 128.130Mhz

EGNOS
CH 92404
E26A

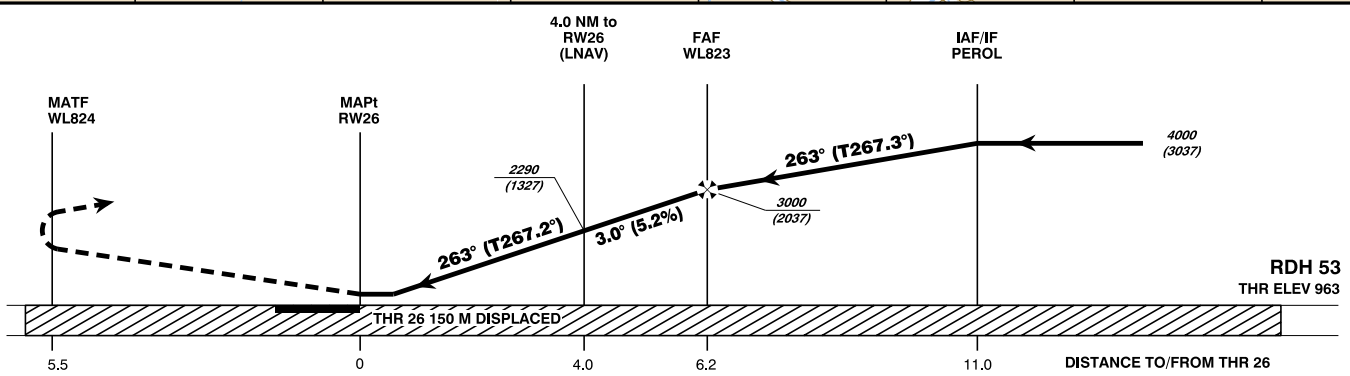
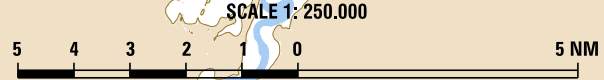
L I N Z (LOWL)
ÖSTERREICH AUSTRIA
RNP RWY 26



CHANGE: OCA (OCH); EDITORIAL

BEARINGS AND TRACKS
ARE MAGNETIC
TRACKS IN BRACKETS
ARE TRUE
ALTITUDES, ELEVATIONS
AND HEIGHTS ARE IN FEET
DISTANCES ARE IN NM

CONTOUR LEGEND
3000 FT
2000 FT
1000 FT
MSL



MISSED APPROACH: CLIMB STRAIGHT AHEAD TO WL824, THEN TURN RIGHT DIRECT TO PEROL;
CLIMB TO 4000 FT AMSL AND HOLD.

OCA (OCH) IN FT	A	B	C	D / D _L
LNAV	1300 (340)			
LNAV/VNAV	1166 (203)	1178 (215)	1220 (257)	1231 (268)
LPV	1141 (178)	1154 (191)	1162 (199)	1172 (209)
CIRCLING	1470 (490)	1550 (570)	1930 (950)	
CIRCLING NOT AUTHORIZED NORTH OF THE AD				

DIST In NM to RW26	6	5	4	3	2
ALTITUDE (HEIGHT)	2930 (1967)	2610 (1647)	2290 (1327)	1970 (1007)	1650 (687)

WL823 to RW26 - DISTANCE 6.2 NM (Timing not authorized for defining the MAPt)							
	GS (KT)	80	100	120	140	160	180
WL823 - RW26	MIN : SEC	4:39	3:43	3:06	2:39	2:20	2:04
Rate of descent (5.2%)	FT / MIN	420	530	640	740	850	960

**Instrument Approach Procedure Coding Table
Linz RNP RWY 26**

Path Terminator	Waypoint				Course/Track ° MAG (° True)	DIST NM	Turn Direction	Constraints		Navigation Specification	Remarks
	Identifier	Type	Flyover	Coordinates				Level	Speed		
IF	WL821	IAF	no	N481934.21 E0142827.85				A5000+		RNP APCH	
IF	WL822	IAF	no	N480935.15 E0142910.85				A4000+		RNP APCH	
IF / TF	PEROL	IAF / IF	no	N481434.69 E0142849.39	174° (177.2°) 354° (357.3°)	5.0		A4000+		RNP APCH	
TF	WL823	FAF	no	N481420.68 E0142138.93	263° (267.3°)	4.8	right left	A3000+		RNP APCH	
TF	RW26	MAPt	yes	N481401.84 E0141220.32	263° (267.2°)	6.2				RNP APCH	
TF	WL824	MATF	yes	N481344.59 E0140407.23	263° (267.1°)	5.5				RNP APCH	
DF	PEROL	MAHF	yes	N481434.69 E0142849.39			right	A4000+		RNP APCH	
RNAV Holding											
Holding Point	Inbound Track ° True	Inbound Track ° MAG	Turn Direction	MAX IAS	Minimum Holding Altitude FT MSL / FL	Time	DIST NM	Remarks			
PEROL	267.2°	263°	right		A4000	1 MIN					

For Flight Simulation and non commercial use only!
Courtesy of Austro Control GmbH



**SBAS FAS Data Block Coding Table
Linz RNP RWY 26**

Input data

Operation Type	0
SBAS Provider	1
Airport Identifier	LOWL
Runway	26
Runway Direction	0
Approach Performance Designator	0
Route Indicator	
Reference Path Data Selector	0
Reference Path Identifier	E26A
LTP/FTP Latitude	481401.8400N
LTP/FTP Longitude	0141220.2800E
LTP/FTP Ellipsoidal Height (metres)	338.5
FPAP Latitude	481357.2620N
Delta FPAP Latitude (seconds)	-4.5780
FPAP Longitude	0141007.8100E
Delta FPAP Longitude (seconds)	-132.4700
Threshold Crossing Height	53.0
TCH Units Selector	0
Glidepath Angle (degrees)	3.00
Course Width (metres)	107.00
Length Offset (metres)	144
HAL (metres)	40.0
VAL (metres)	35.0

Output data

Data Block	10 0C 17 0F 0C 1A 00 00 01 36 32 05 E0 20 B3 14 70 AD 18 06 39 21 3C DC FF 14 F5 FB 12 02 2C 01 6C 12 C8 AF 01 53 A1 45
Calculated CRC Value	0153A145

Required Additional Data

ICAO Code	LO
LTP/FTP Orthometric Height (metres)	293.5
FPAP Orthometric Height (metres)	293.5