

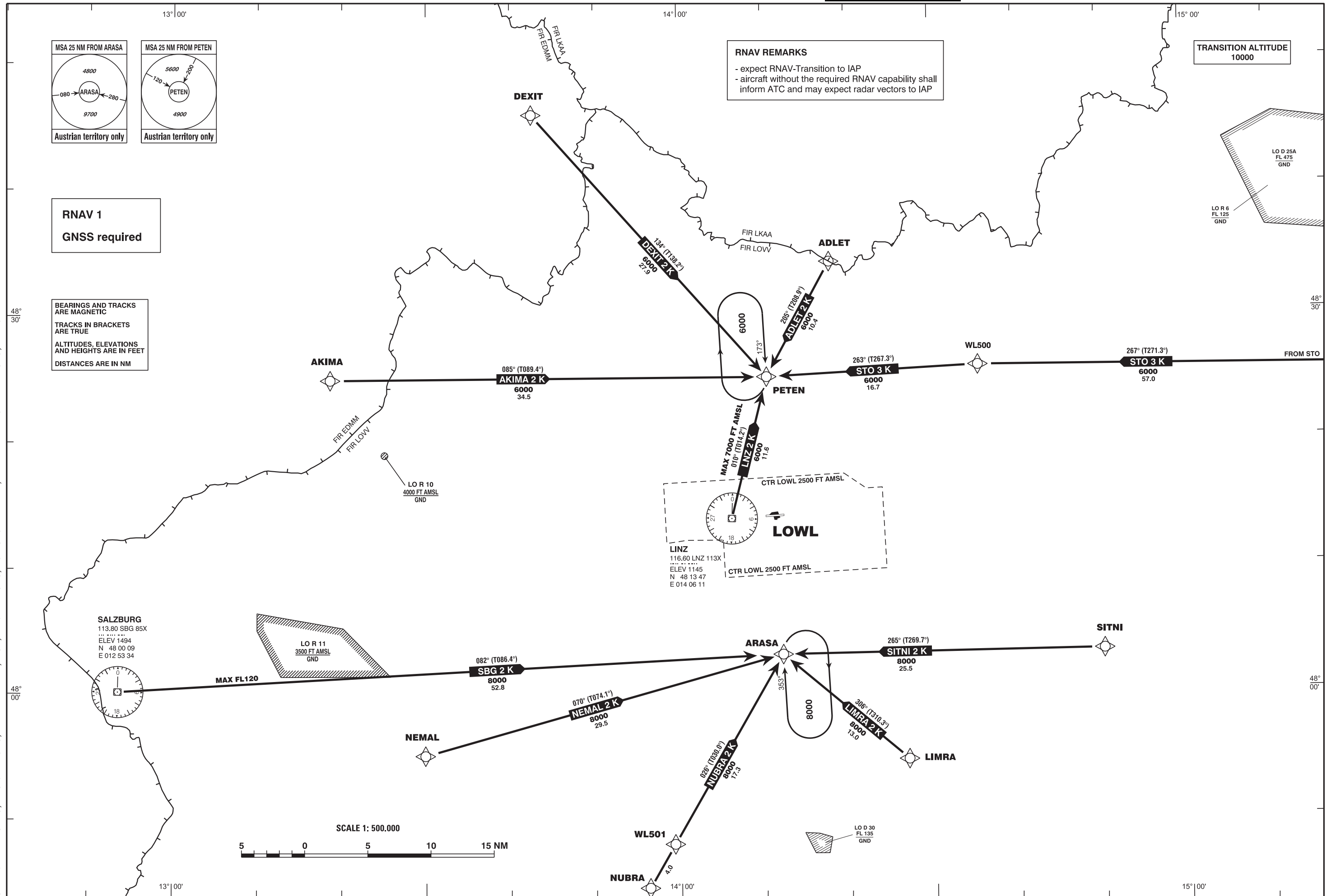
For Flight Simulation and non commercial use only!  
Courtesy of Austro Control GmbH

vacc  
AUSTRIA

STANDARD ARRIVAL CHART - INSTRUMENT (STAR) - ICAO

Radar 125.685Mhz  
Tower 118.800Mhz  
Atis 128.130Mhz

L I N Z (LOWL)  
ÖSTERREICH AUSTRIA



CHANGE: NAV SPEC; DESIGNATORS; RNAV REMARK; MSA; MAG. TRACKS; VOR STO DELETED; NEW INITIAL POINT DME STO; EDITORIAL

Designator	Route							Remarks		
<b>ADLET 2 K</b> Adlet two kilo arrival	ADLET - PETEN									
RNAV STAR Coding Table of ADLET 2 K										
Path Terminator	Waypoint			Course/Track ° MAG (° True)	DIST NM	Turn Direction	Constraints		Navigation Specification	Remarks
	Identifier	Flyover	Coordinates				Crossing ALT	Speed		
IF	ADLET	no	N483403.36 E0141757.42				A6000+		RNAV 1	
TF	PETEN	no	N482458.49 E0141026.08	205° (208.9°)	10.4		A6000+		RNAV 1	

Designator	Route							Remarks		
<b>AKIMA 2 K</b> Akima two kilo arrival	AKIMA - PETEN									
RNAV STAR Coding Table of AKIMA 2 K										
Path Terminator	Waypoint			Course/Track ° MAG (° True)	DIST NM	Turn Direction	Constraints		Navigation Specification	Remarks
	Identifier	Flyover	Coordinates				Crossing ALT	Speed		
IF	AKIMA	no	N482447.38 E0131837.49				A6000+		RNAV 1	
TF	PETEN	no	N482458.49 E0141026.08	085° (089.4°)	34.5		A6000+		RNAV 1	

Designator	Route							Remarks		
<b>DEXIT 2 K</b> Dexit two kilo arrival	DEXIT - PETEN									
RNAV STAR Coding Table of DEXIT 2 K										
Path Terminator	Waypoint			Course/Track ° MAG (° True)	DIST NM	Turn Direction	Constraints		Navigation Specification	Remarks
	Identifier	Flyover	Coordinates				Crossing ALT	Speed		
IF	DEXIT	no	N484546.00 E0134233.00				A6000+		RNAV 1	
TF	PETEN	no	N482458.49 E0141026.08	134° (138.2°)	27.9		A6000+		RNAV 1	

Designator	Route						Remarks			
<b>LIMRA 2 K</b> Limra two kilo arrival	LIMRA - ARASA									
RNAV STAR Coding Table of LIMRA 2 K										
Path Terminator	Waypoint			Course/ Track ° MAG (° True)	DIST NM	Turn Direction	Constraints		Navigation Specification	Remarks
	Identifier	Flyover	Coordinates				Crossing ALT	Speed		
IF	LIMRA	no	N475439.53 E0142652.02				A8000+		RNAV 1	
TF	ARASA	no	N480300.81 E0141208.51	306° (310.3°)	13.0		A8000+		RNAV 1	

Designator	Route						Remarks			
<b>LNZ 2 K</b> Linz two kilo arrival	VOR/DME LNZ - PETEN									
RNAV STAR Coding Table of LNZ 2 K										
Path Terminator	Waypoint			Course/ Track ° MAG (° True)	DIST NM	Turn Direction	Constraints		Navigation Specification	Remarks
	Identifier	Flyover	Coordinates				Crossing ALT	Speed		
IF	VOR/DME LNZ	no	N481346.96 E0140611.36				A7000- A6000+		RNAV 1	
TF	PETEN	no	N482458.49 E0141026.08	010° (014.2°)	11.6		A7000- A6000+		RNAV 1	

Designator	Route						Remarks			
<b>NEMAL 2 K</b> Nemal two kilo arrival	NEMAL - ARASA									
RNAV STAR Coding Table of NEMAL 2 K										
Path Terminator	Waypoint			Course/ Track ° MAG (° True)	DIST NM	Turn Direction	Constraints		Navigation Specification	Remarks
	Identifier	Flyover	Coordinates				Crossing ALT	Speed		
IF	NEMAL	no	N475505.00 E0132954.00				A8000+		RNAV 1	
TF	ARASA	no	N480300.81 E0141208.51	070° (074.1°)	29.5		A8000+		RNAV 1	

Designator	Route	Remarks
<b>NUBRA 2 K</b> Nubra two kilo arrival	NUBRA - WL501 - ARASA	

RNAV STAR Coding Table of NUBRA 2 K

Path Terminator	Waypoint			Course/Track ° MAG (° True)	DIST NM	Turn Direction	Constraints		Navigation Specification	Remarks
	Identifier	Flyover	Coordinates				Crossing ALT	Speed		
IF	NUBRA	no	N474435.05 E0135616.49				A11000+		RNAV 1	
TF	WL501	no	N474802.79 E0135914.34	026° (030.0°)	4.0		A11000+		RNAV 1	
TF	ARASA	no	N480300.81 E0141208.51	026° (030.0°)	17.3		A8000+		RNAV 1	

Designator	Route	Remarks
<b>SBG 2 K</b> Salzburg two kilo arrival	VOR/DME SBG - ARASA	

RNAV STAR Coding Table of SBG 2 K

Path Terminator	Waypoint			Course/Track ° MAG (° True)	DIST NM	Turn Direction	Constraints		Navigation Specification	Remarks
	Identifier	Flyover	Coordinates				Crossing ALT	Speed		
IF	VOR/DME SBG	no	N480009.30 E0125333.94				F120– A8000+		RNAV 1	
TF	ARASA	no	N480300.81 E0141208.51	082° (086.4°)	52.8		F120– A8000+		RNAV 1	

Designator	Route	Remarks
<b>SITNI 2 K</b> Sitni two kilo arrival	SITNI - ARASA	

RNAV STAR Coding Table of SITNI 2 K

Path Terminator	Waypoint			Course/Track ° MAG (° True)	DIST NM	Turn Direction	Constraints		Navigation Specification	Remarks
	Identifier	Flyover	Coordinates				Crossing ALT	Speed		
IF	SITNI	no	N480315.22 E0145004.61				A8000+		RNAV 1	
TF	ARASA	no	N480300.81 E0141208.51	265° (269.7°)	25.5		A8000+		RNAV 1	

Designator	Route	Remarks
<b>STO 3 K</b> Stockerau three kilo arrival	STO - WL500 - PETEN	

**RNAV STAR Coding Table of STO 3 K**

Path Terminator	Waypoint			Course/Track ° MAG (° True)	DIST NM	Turn Direction	Constraints		Navigation Specification	Remarks
	Identifier	Flyover	Coordinates				Crossing ALT	Speed		
IF	STO	no	N482501.51 E0160107.53				F160– A6000+		RNAV 1	
TF	WL500	no	N482547.79 E0143531.95	267° (271.3°)	57.0		A6000+		RNAV 1	
TF	PETEN	no	N482458.49 E0141026.08	263° (267.3°)	16.7	left	A6000+		RNAV 1	

**RNAV Holding**

Holding Point	Inbound Track ° True	Inbound Track ° MAG	Turn Direction	MAX IAS	Minimum Holding Altitude FT MSL / FL	Time	DIST NM	Remarks
PETEN	177.0°	173°	right		A6000	1 MIN		
ARASA	357.0°	353°	right		A8000	1 MIN		

For Flight Simulation and non commercial use only !

Courtesy of Austro Control GmbH