

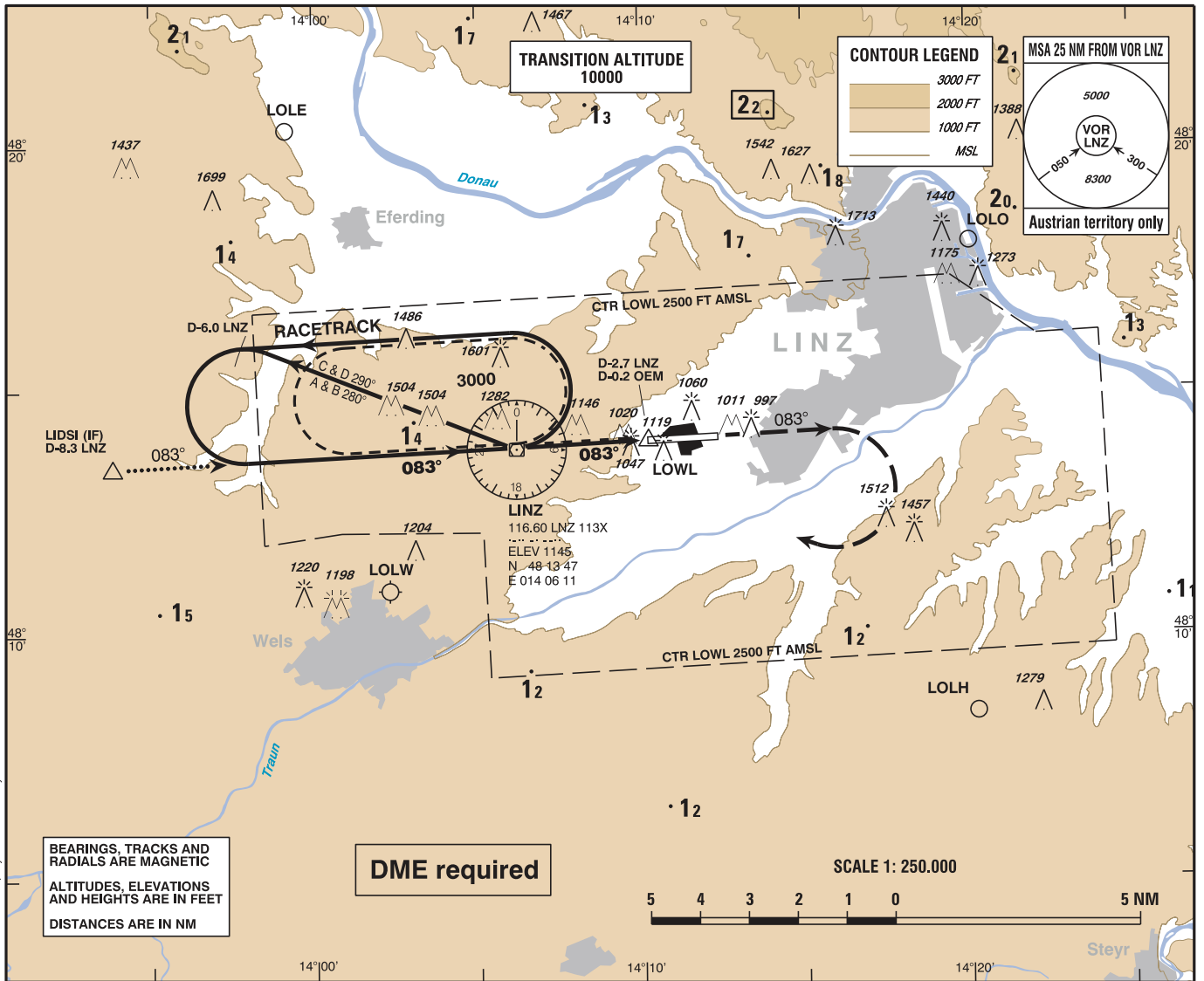
**INSTRUMENT
APPROACH
CHART - ICAO**

VAR 4° E

AD ELEV 980 FT
THR 08 ELEV 978 FT
HGT RELATED TO THR ELEV
CIRCLING HGT RELATED TO AD ELEV

Radar 129.620Mhz
Director 119.750Mhz
Tower 118.800Mhz
Atis 128.120Mhz

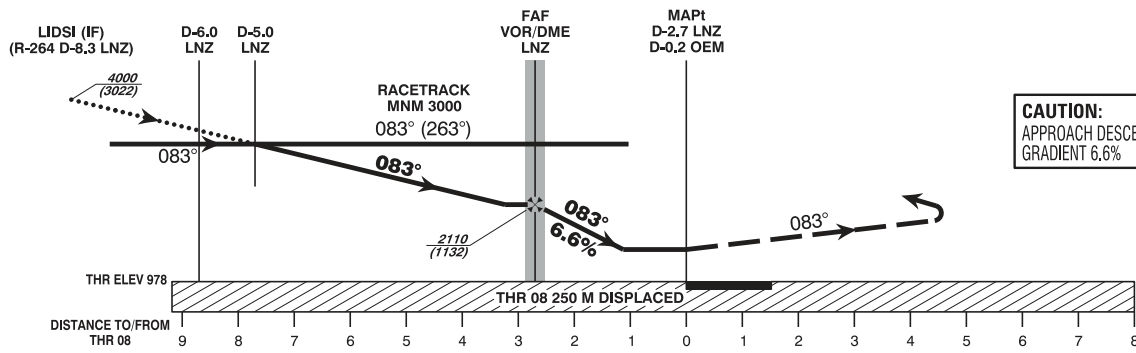
L I N Z
ÖSTERREICH AUSTRIA
VOR RWY 08



BEARINGS, TRACKS AND RADIALS ARE MAGNETIC
ALTITUDES, ELEVATIONS AND HEIGHTS ARE IN FEET
DISTANCES ARE IN NM

DME required

SCALE 1: 250.000



CAUTION:
APPROACH DESCENT
GRADIENT 6.6%

MISSED APPROACH : CLIMB ON R-083 LNZ, WHEN PASSING 3000 FT AMSL TURN RIGHT TO VOR/DME LNZ; CONTINUE CLIMB TO 4000 FT AMSL AND HOLD.

OCA (OCH) IN FT		A	B	C	D	VOR/DME LNZ to THR 08 - DISTANCE 2.7 NM (Timing not authorized for defining the MAPt)							
STRAIGHT-IN APPROACH	VOR/DME	1480 (510)				GS (KT)	80	100	120	140	160	180	
						VOR/DME LNZ - THR 08	MIN : SEC	2:02	1:37	1:21	1:09	1:01	0:54
CIRCLING		1480 (500)	1530 (550)	1910 (930)	1910 (930)	Rate of descent (6.6%)	FT / MIN	530	670	800	940	1070	1200
CIRCLING NOT AUTHORIZED NORTH OF THE AD													

For Flight Simulation and non commercial use only !
Courtesy of Austro Control GmbH

vacc
AUSTRIA

CHANGE: OCA/H; CIRCLING; EDITORIAL