

For Flight Simulation and non commercial use only !
Courtesy of Austro Control GmbH

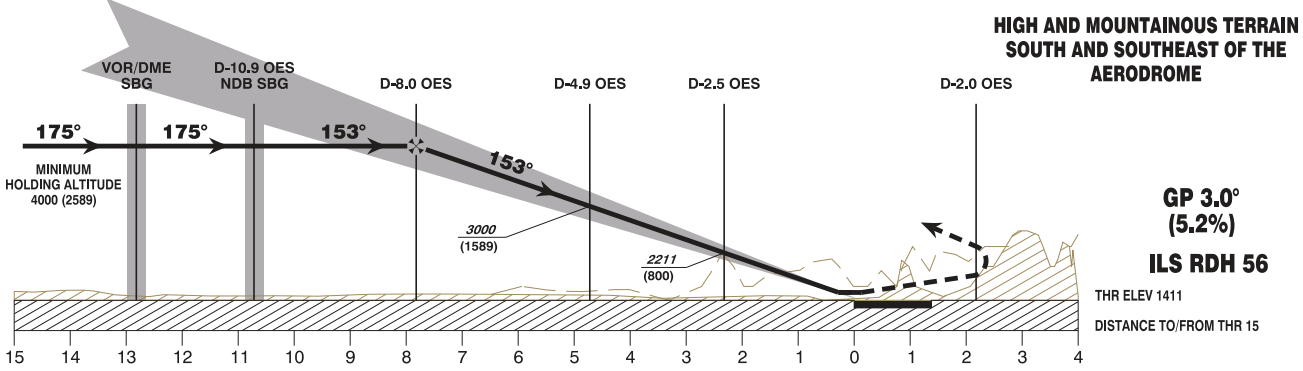
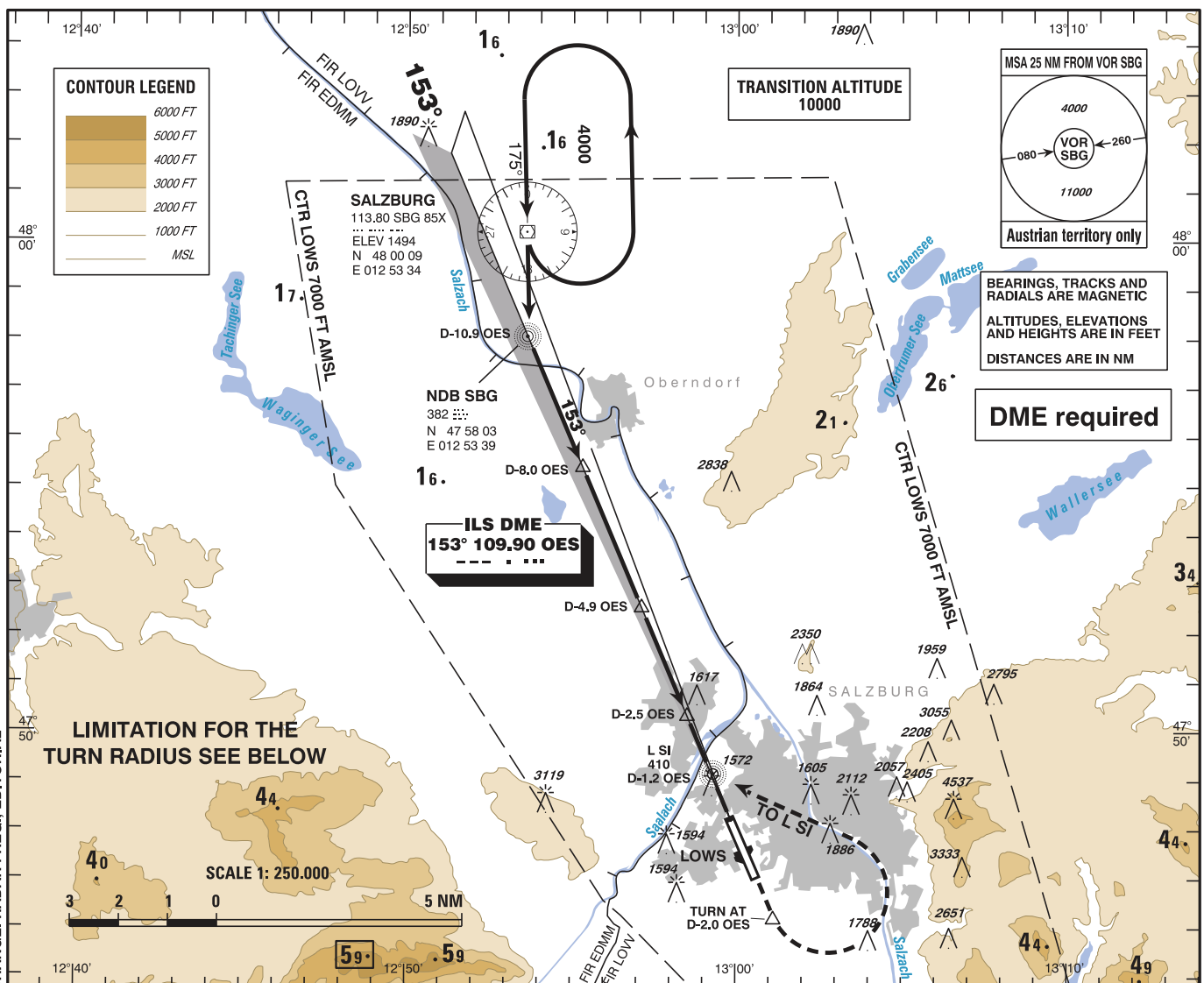
INSTRUMENT APPROACH CHART - ICAO

VAR 4° E

AD ELEV 1411 FT
THR 15 ELEV 1411 FT
HGT RELATED TO THR ELEV

Radar 123.720Mhz
Tower 118.100Mhz
Delivery 121.750Mhz
Atis 133.320Mhz

SALZBURG
ÖSTERREICH AUSTRIA
SPECIAL ILS CAT II & III RWY 15



MISSED APPROACH (NOT PANS-OPS STANDARD): CLIMB STRAIGHT AHEAD. AT D-2.0 OES (SOUTH), TURN LEFT AND CLIMB VIA L SI AND NDB SBG TO VOR/DME SBG; CLIMB TO 6000 FT AMSL AND HOLD.

Note 1: Accelerate NOT before turn is completed and NOT below 2500 FT AMSL.
Note 2: Observe the required max radius of turn, the resulting speed limits and MNM bank angle !

Special CAT II & III RDO AltIm. and B/C approach required !	OCA (OCH)	A	B	C	D / D _L	DME OES											
	CAT II	1451 (40)	1468 (57)	1480 (69)	1494 (83)	7	6	5	4	3	2	DIST THR	6.8	5.8	4.8	3.8	2.8
CAT II & III	MA - CLIMB GRADIENT	STRAIGHT		MAX RADIUS OF TURN	e.g. for IAS MAX and BANK ANGLE	ALT (HEIGHT)	3680 (2269)	3350 (1939)	3030 (1619)	2700 (1289)	2370 (959)	2050 (639)					
		TURN															
according special permission																	

PROCEDURE REQUIRES AUTHORIZATION BY Austro Control GmbH !

vacc AUSTRIA