

For Flight Simulation and non commercial use only!

Courtesy of Austro Control GmbH

vacc
AUSTRIA

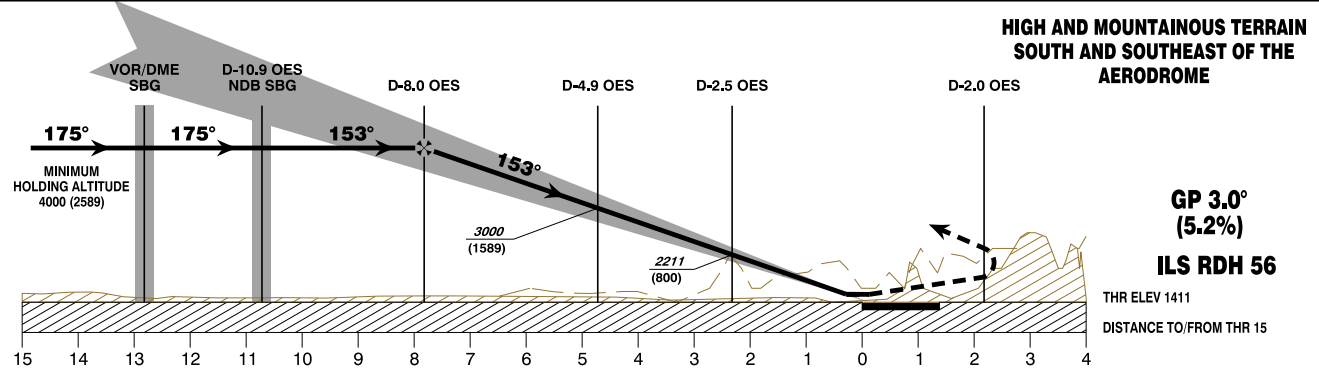
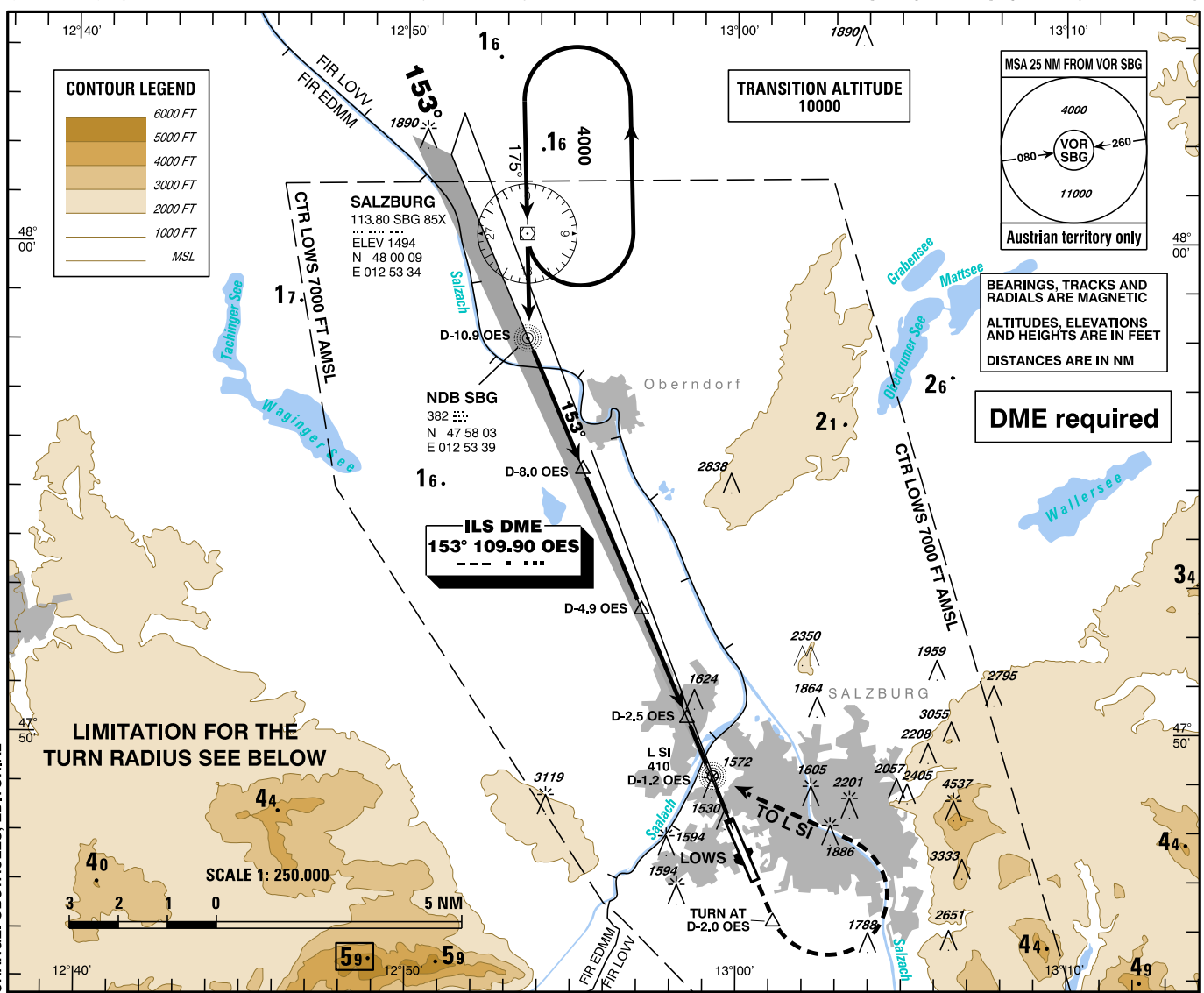
INSTRUMENT APPROACH CHART - ICAO

VAR 4° E

AD ELEV 1411 FT
THR 15 ELEV 1411 FT
HGT RELATED TO THR ELEV

Radar	123.720Mhz
Tower	118.100Mhz
Delivery	121.750Mhz
Atis	126.020Mhz

SALZBURG
ÖSTERREICH AUSTRIA
SPECIAL ILS CAT II & III RWY 15



MISSED APPROACH (NOT PANS-OPS STANDARD): CLIMB STRAIGHT AHEAD, AT D-2.0 OES (SOUTH), TURN LEFT AND CLIMB VIA L SI AND NDB SBG TO VOR/DME SBG; CLIMB TO 6000 FT AMSL AND HOLD.

Note 1: Accelerate NOT before turn is completed and NOT below 2500 FT AMSL.
Note 2: Observe the required max radius of turn, the resulting speed limits and MNM bank angle!

Special CAT II & III RDO AltIm. and B/C approach required!	OCA (OCH)	A	B	C	D / D _L	<table border="1"> <tr><td>DME OES</td><td>7</td><td>6</td><td>5</td><td>4</td><td>3</td><td>2</td></tr> <tr><td>DIST THR</td><td>6.8</td><td>5.8</td><td>4.8</td><td>3.8</td><td>2.8</td><td>1.8</td></tr> <tr><td>ALT (HEIGHT)</td><td>3680 (2269)</td><td>3350 (1939)</td><td>3030 (1619)</td><td>2700 (1289)</td><td>2370 (959)</td><td>2050 (639)</td></tr> </table>	DME OES	7	6	5	4	3	2	DIST THR	6.8	5.8	4.8	3.8	2.8	1.8	ALT (HEIGHT)	3680 (2269)	3350 (1939)	3030 (1619)	2700 (1289)	2370 (959)	2050 (639)
	DME OES	7	6	5	4		3	2																			
	DIST THR	6.8	5.8	4.8	3.8		2.8	1.8																			
ALT (HEIGHT)	3680 (2269)	3350 (1939)	3030 (1619)	2700 (1289)	2370 (959)	2050 (639)																					
CAT II	1451 (40)	1468 (57)	1480 (69)	1494 (83)																							
CAT II & III	MA - CLIMB GRADIENT		MAX RADIUS OF TURN	e.g. for IAS MAX and BANK ANGLE																							
	STRAIGHT	TURN																									
according special permission																											

PROCEDURE REQUIRES AUTHORIZATION BY Austro Control GmbH!