

For Flight Simulation and non commercial use only!  
Courtesy of Austro Control GmbH



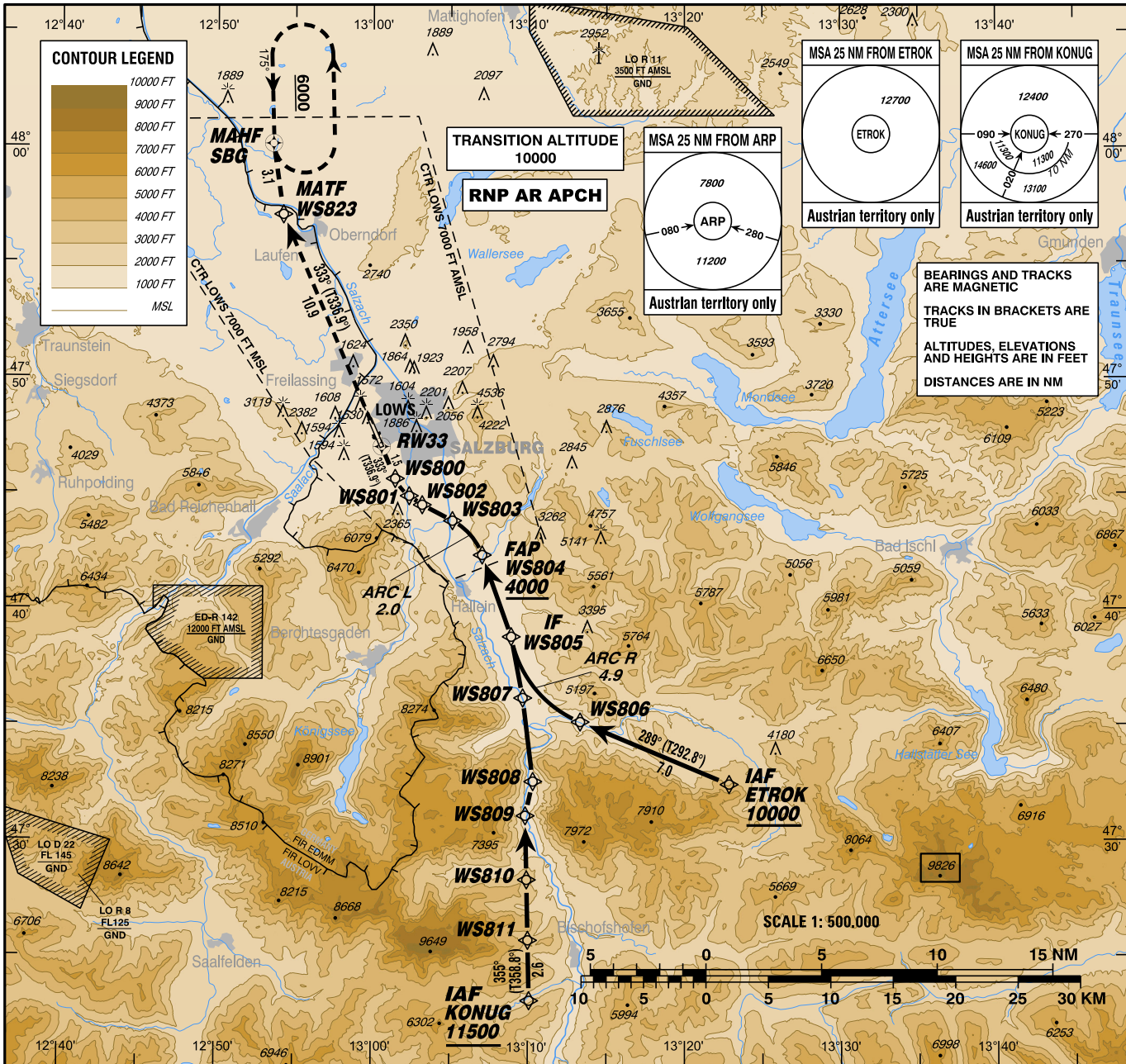
**INSTRUMENT APPROACH CHART - ICAO**

VAR 4° E

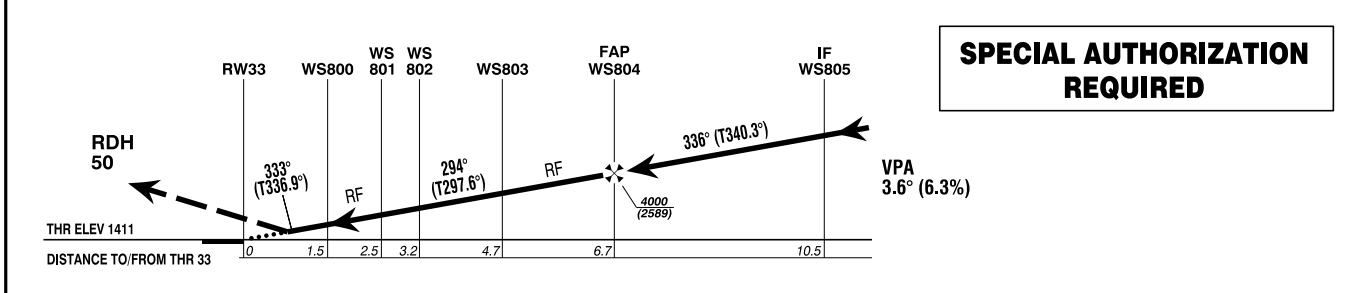
AD ELEV 1411 FT  
THR 33 ELEV 1411 FT  
HGT RELATED TO THR ELEV

|       |         |
|-------|---------|
| RADAR | 123.725 |
| TOWER | 132.460 |
| ATIS  | 118.100 |
|       | 133.330 |

**SALZBURG (LOWS)**  
ÖSTERREICH AUSTRIA  
RNP Z RWY 33 (AR)



CHANGE: MSA ARP: EDITORIAL



|                 |                   |          |          |
|-----------------|-------------------|----------|----------|
| OCA (OCH) IN FT | <b>A</b>          | <b>B</b> | <b>C</b> |
| RNP 0.3         | <b>1780 (369)</b> |          |          |

|          |     |     |     |     |      |      |
|----------|-----|-----|-----|-----|------|------|
| GS (KT)  | 80  | 100 | 120 | 140 | 160  | 180  |
| FT / MIN | 510 | 640 | 770 | 890 | 1020 | 1150 |

1. For uncompensated Baro-VNAV systems, procedure not authorized below AD temp -15°C  
2. VPA exceeds 3.6° above +12°C  
3. PAPI angle not coincident with the VPA

**This procedure is permissible for special equipped aircraft and requires authorization by Austro Control GmbH**

(for detailed information see LOWS AD 2.22, item 9)

**MISSED APPROACH:**  
CLIMB VIA WS823 AND SBG TO 6000 FT AMSL AND HOLD.

**Instrument Approach Procedure Coding Table  
Salzburg RNP Z RWY 33 (AR) - via ETROK**

| Path Terminator | Waypoint   |      |         |                           | Course/Track<br>° MAG<br>(° True) | DIST<br>NM | Turn<br>Direction | ARC Centre<br>Waypoint |                           | ARC Radius<br>NM |
|-----------------|------------|------|---------|---------------------------|-----------------------------------|------------|-------------------|------------------------|---------------------------|------------------|
|                 | Identifier | Type | Flyover | Coordinates               |                                   |            |                   | Identifier             | Coordinates               |                  |
| IF              | ETROK      | IAF  | no      | N473227.17<br>E0132251.17 |                                   |            |                   |                        |                           |                  |
| TF              | WS806      |      | no      | N473509.18<br>E0131319.96 | 289°<br>(292.8°)                  | 7.0        |                   |                        |                           |                  |
| RF              | WS805      | IF   | no      | N473850.16<br>E0130854.96 |                                   | 4.9        | right             | WS822                  | N473945.81<br>E0131611.01 | 5.0              |
| TF              | WS804      | FAP  | no      | N474221.95<br>E0130702.79 | 336°<br>(340.3°)                  | 3.8        |                   |                        |                           |                  |
| RF              | WS803      |      | no      | N474350.81<br>E0130508.18 |                                   | 2.0        | left              | WS821                  | N474127.34<br>E0130317.04 | 2.7              |
| TF              | WS802      |      | no      | N474431.87<br>E0130311.74 | 294°<br>(297.6°)                  | 1.5        |                   |                        |                           |                  |
| TF              | WS801      |      | no      | N474455.14<br>E0130221.70 | 301°<br>(304.6°)                  | 0.7        | right             |                        |                           |                  |
| RF              | WS800      |      | no      | N474539.81<br>E0130127.60 |                                   | 1.0        | right             | WS820                  | N474620.41<br>E0130348.99 | 1.7              |
| TF              | RW33       |      | yes     | N474702.57<br>E0130035.34 | 333°<br>(336.9°)                  | 1.5        |                   |                        |                           |                  |
| TF              | WS823      | MATF | no      | N475704.79<br>E0125413.55 | 333°<br>(336.9°)                  | 10.9       |                   |                        |                           |                  |
| TF              | SBG        | MAHF | yes     | N480009.30<br>E0125333.94 | 348°<br>(351.8°)                  | 3.1        | right             |                        |                           |                  |

| Waypoint<br>Identifier | Constraints |       | RNP Value<br>NM | Navigation<br>Specification | Remarks |
|------------------------|-------------|-------|-----------------|-----------------------------|---------|
|                        | Level       | Speed |                 |                             |         |
| ETROK                  | A10000+     |       | 0.3             | RNP AR APCH                 |         |
| WS806                  | A7400+      |       | 0.3             | RNP AR APCH                 |         |
| WS805                  | A5500+      |       | 0.3             | RNP AR APCH                 |         |
| WS804                  | A4000+      |       | 0.3             | RNP AR APCH                 |         |
| WS803                  |             |       | 0.3             | RNP AR APCH                 |         |
| WS802                  |             |       | 0.3             | RNP AR APCH                 |         |
| WS801                  |             |       | 0.3             | RNP AR APCH                 |         |
| WS800                  |             |       | 0.3             | RNP AR APCH                 |         |
| RW33                   |             |       | 0.3             | RNP AR APCH                 |         |
| WS823                  |             |       | 1.0             | RNP AR APCH                 |         |
| SBG                    | A6000+      |       | 1.0             | RNP AR APCH                 |         |

**RNAV Holding**

| Holding Point | Inbound Track<br>° True | Inbound Track<br>° MAG | Turn Direction | MAX IAS | Minimum Holding Altitude<br>FT MSL / FL | Time  | DIST<br>NM | Remarks |
|---------------|-------------------------|------------------------|----------------|---------|---|-------|------------|---------|
| SBG           | 178.8°                  | 175°                   | left           |         | A6000                                   | 1 MIN |            |         |

**Instrument Approach Procedure Coding Table  
Salzburg RNP Z RWY 33 (AR) - via KONUG**

| Path Terminator | Waypoint   |      |         |                           | Course/Track ° MAG (° True) | DIST NM | Turn Direction | ARC Centre Waypoint |                           | ARC Radius NM |
|-----------------|------------|------|---------|---------------------------|-----------------------------|---------|----------------|---------------------|---------------------------|---------------|
|                 | Identifier | Type | Flyover | Coordinates               |                             |         |                | Identifier          | Coordinates               |               |
| IF              | KONUG      | IAF  | no      | N472306.07<br>E0131004.66 |                             |         |                |                     |                           |               |
| TF              | WS811      |      | no      | N472542.82<br>E0130959.79 | 355°<br>(358.8°)            | 2.6     |                |                     |                           |               |
| TF              | WS810      |      | no      | N472819.58<br>E0130954.91 | 355°<br>(358.8°)            | 2.6     |                |                     |                           |               |
| TF              | WS809      |      | no      | N473105.81<br>E0130949.73 | 355°<br>(358.8°)            | 2.8     |                |                     |                           |               |
| TF              | WS808      |      | no      | N473234.56<br>E0131018.56 | 009°<br>(012.4°)            | 1.5     | right          |                     |                           |               |
| TF              | WS807      |      | no      | N473611.40<br>E0130939.49 | 349°<br>(353.1°)            | 3.6     | left           |                     |                           |               |
| TF              | WS805      | IF   | no      | N473850.16<br>E0130854.96 | 345°<br>(349.3°)            | 2.7     | left           |                     |                           |               |
| TF              | WS804      | FAP  | no      | N474221.95<br>E0130702.79 | 336°<br>(340.3°)            | 3.8     | left           |                     |                           |               |
| RF              | WS803      |      | no      | N474350.81<br>E0130508.18 |                             | 2.0     | left           | WS821               | N474127.34<br>E0130317.04 | 2.7           |
| TF              | WS802      |      | no      | N474431.87<br>E0130311.74 | 294°<br>(297.6°)            | 1.5     |                |                     |                           |               |
| TF              | WS801      |      | no      | N474455.14<br>E0130221.70 | 301°<br>(304.6°)            | 0.7     | right          |                     |                           |               |
| RF              | WS800      |      | no      | N474539.81<br>E0130127.60 |                             | 1.0     | right          | WS820               | N474620.41<br>E0130348.99 | 1.7           |
| TF              | RW33       |      | yes     | N474702.57<br>E0130035.34 | 333°<br>(336.9°)            | 1.5     |                |                     |                           |               |
| TF              | WS823      | MATF | no      | N475704.79<br>E0125413.55 | 333°<br>(336.9°)            | 10.9    |                |                     |                           |               |
| TF              | SBG        | MAHF | yes     | N480009.30<br>E0125333.94 | 348°<br>(351.8°)            | 3.1     | right          |                     |                           |               |

| Waypoint Identifier | Constraints |       | RNP Value NM | Navigation Specification | Remarks |
|---------------------|-------------|-------|--------------|--------------------------|---------|
|                     | Level       | Speed |              |                          |         |
| KONUG               | A11500+     |       | 0.3          | RNP AR APCH              |         |
| WS811               | A10500+     |       | 0.3          | RNP AR APCH              |         |
| WS810               | A9500+      |       | 0.3          | RNP AR APCH              |         |
| WS809               | A8500+      |       | 0.3          | RNP AR APCH              |         |
| WS808               | A7900+      |       | 0.3          | RNP AR APCH              |         |
| WS807               | A6500+      |       | 0.3          | RNP AR APCH              |         |
| WS805               | A5500+      |       | 0.3          | RNP AR APCH              |         |
| WS804               | A4000+      |       | 0.3          | RNP AR APCH              |         |
| WS803               |             |       | 0.3          | RNP AR APCH              |         |
| WS802               |             |       | 0.3          | RNP AR APCH              |         |
| WS801               |             |       | 0.3          | RNP AR APCH              |         |
| WS800               |             |       | 0.3          | RNP AR APCH              |         |
| RW33                |             |       | 0.3          | RNP AR APCH              |         |
| WS823               |             |       | 1.0          | RNP AR APCH              |         |
| SBG                 | A6000+      |       | 1.0          | RNP AR APCH              |         |

**RNAV Holding**

| Holding Point | Inbound Track ° True | Inbound Track ° MAG | Turn Direction | MAX IAS | Minimum Holding Altitude FT MSL / FL | Time  | DIST NM | Remarks |
|---------------|----------------------|---------------------|----------------|---------|--------------------------------------|-------|---------|---------|
| SBG           | 178.8°               | 175°                | left           |         | A6000                                | 1 MIN |         |         |