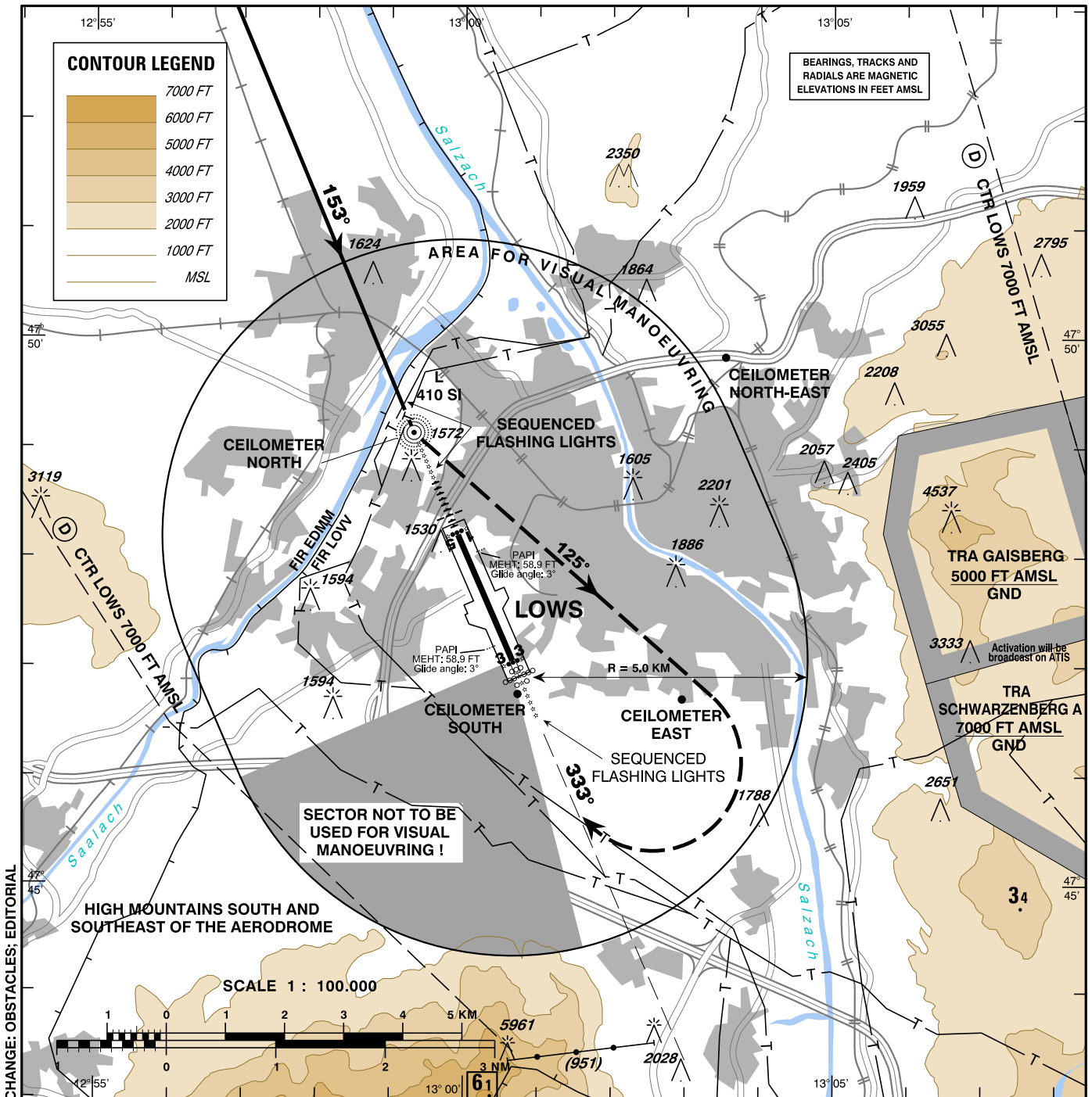


Radar 123.720Mhz  
Tower 118.100Mhz  
Delivery 121.750Mhz  
Atis 126.020Mhz

**SALZBURG**  
ÖSTERREICH AUSTRIA

**CIRCLING RWY 33**    VAR 4° E    AD ELEV 1411 FT



**CIRCLING PROCEDURE RWY 33:**

Complete a published instrument approach to RWY 15;  
After passing L SI proceed VISUALLY approximately on track 125° 3.5 NM followed by right turn for positioning on to final RWY 33.

If visual contact to the airport during the circling manoeuvre is lost, climb to the minimum circling altitude and turn right to L SI. Do not overshoot QDM 333°L SI ; after L SI follow the missed approach procedure as described for the ILS RWY 15 approach.

OCA		CIRCLING
A/C CATEGORY		MNM REQUIRED FLIGHT VISIBILITY
A	2450 FT AMSL	2.8 KM
B	2500 FT AMSL	
C	2600 FT AMSL	3.7 KM
D		4.6 KM