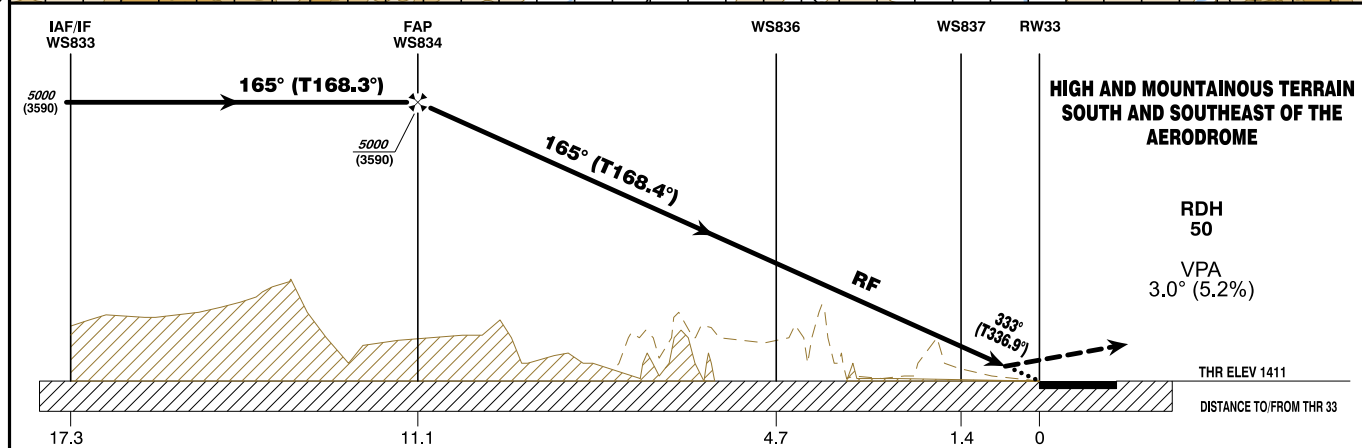
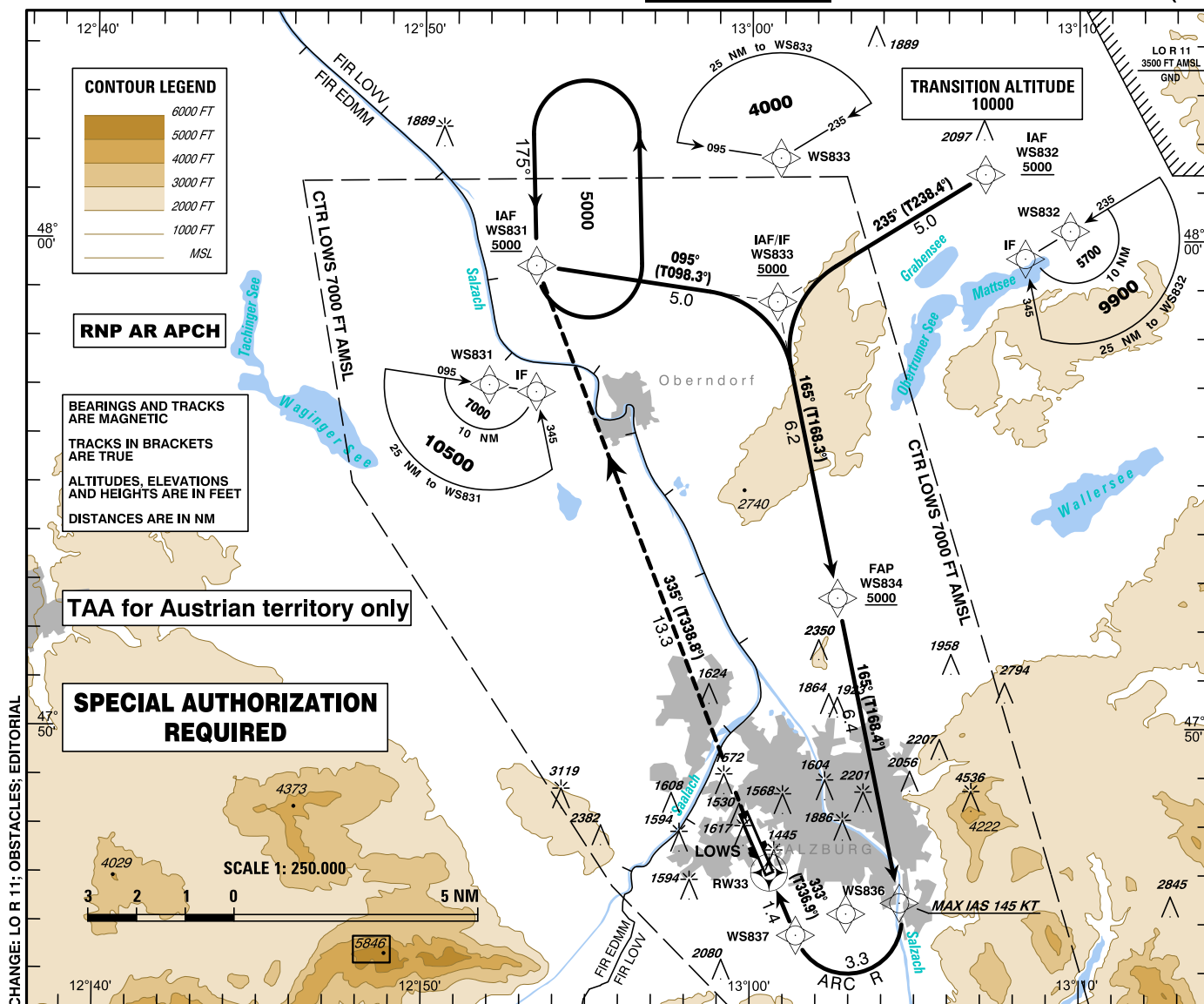


**INSTRUMENT
APPROACH
CHART - ICAO**

VAR 4° E

AD ELEV 1411 FT
THR 33 ELEV 1411 FT
HGT RELATED TO AD ELEVRadar 123.725Mhz
Tower 118.100Mhz
Delivery 121.750Mhz
Atis 133.330Mhz**SALZBURG**
ÖSTERREICH AUSTRIA
RNP Y RWY 33 (AR)**MISSED APPROACH: CLIMB STRAIGHT AHEAD TO WS831; CLIMB TO 6000 FT AMSL AND HOLD.**

OCA (OCH) IN FT	A	B	C	D
RNP 0.3	1790 (379)			

GS (KT)	80	100	120	140	160	180
FT / MIN	420	530	640	740	850	960

1. Dual GNSS and at least one IRU or equivalent
2. DME/DME, LOC and VOR/DME updating not authorized
3. For uncompensated Baro-VNAV systems, procedure N/A below AD temp -15°C
4. VPA exceeds 3.5° above +50°C

This procedure is permissible for special equipped aircraft and requires authorization by Austro Control GmbH

(for detailed information see LOWS AD 2.22, item 10)

**Instrument Approach Procedure Coding Table
Salzburg RNP Y RWY 33 (AR)**

Path Terminator	Waypoint				Course/ Track ° MAG (° True)	DIST NM	Turn Direction	ARC Centre Waypoint		ARC Radius NM
	Identifier	Type	Flyover	Coordinates				Identifier	Coordinates	
IF	WS831	IAF	no	N475928.01 E0125325.19						
IF	WS832	IAF	no	N480121.80 E0130707.80						
IF / TF	WS833	IAF / IF	no	N475844.65 E0130047.22	095° (098.3°)	5.0	right			
					235° (238.4°)		left			
TF	WS834	FAP	no	N475240.41 E0130238.87	165° (168.3°)	6.2				
TF	WS836		no	N474625.49 E0130433.25	165° (168.4°)	6.4				
RF	WS837		no	N474545.56 E0130123.97		3.3	right	WS838	N474611.96 E0130255.61	1.1
TF	RW33		yes	N474702.57 E0130035.34	333° (336.9°)	1.4				
TF	WS831	MAHF	yes	N475928.01 E0125325.19	335° (338.8°)	13.3				
Waypoint	Constraints		RNP Value NM	Navigation Specification	Remarks					
Identifier	Level	Speed								
WS831	A5000+		0.3	RNP AR APCH						
WS832	A5000+		0.3	RNP AR APCH						
WS833	A5000+		0.3	RNP AR APCH						
WS834	A5000+		0.3	RNP AR APCH						
WS836		K145-	0.3	RNP AR APCH						
WS837		K145-	0.3	RNP AR APCH						
RW33			0.3	RNP AR APCH						
WS831	A6000+		1.0	RNP AR APCH						
RNAV Holding										
Holding Point	Inbound Track ° True	Inbound Track ° MAG	Turn Direction	MAX IAS	Minimum Holding Altitude FT MSL / FL	Time	DIST NM	Remarks		
WS831	178.8°	175°	left		A5000	1 MIN				