

For Flight Simulation and non commercial use only!

Courtesy of Austro Control GmbH

vacc
AUSTRIA

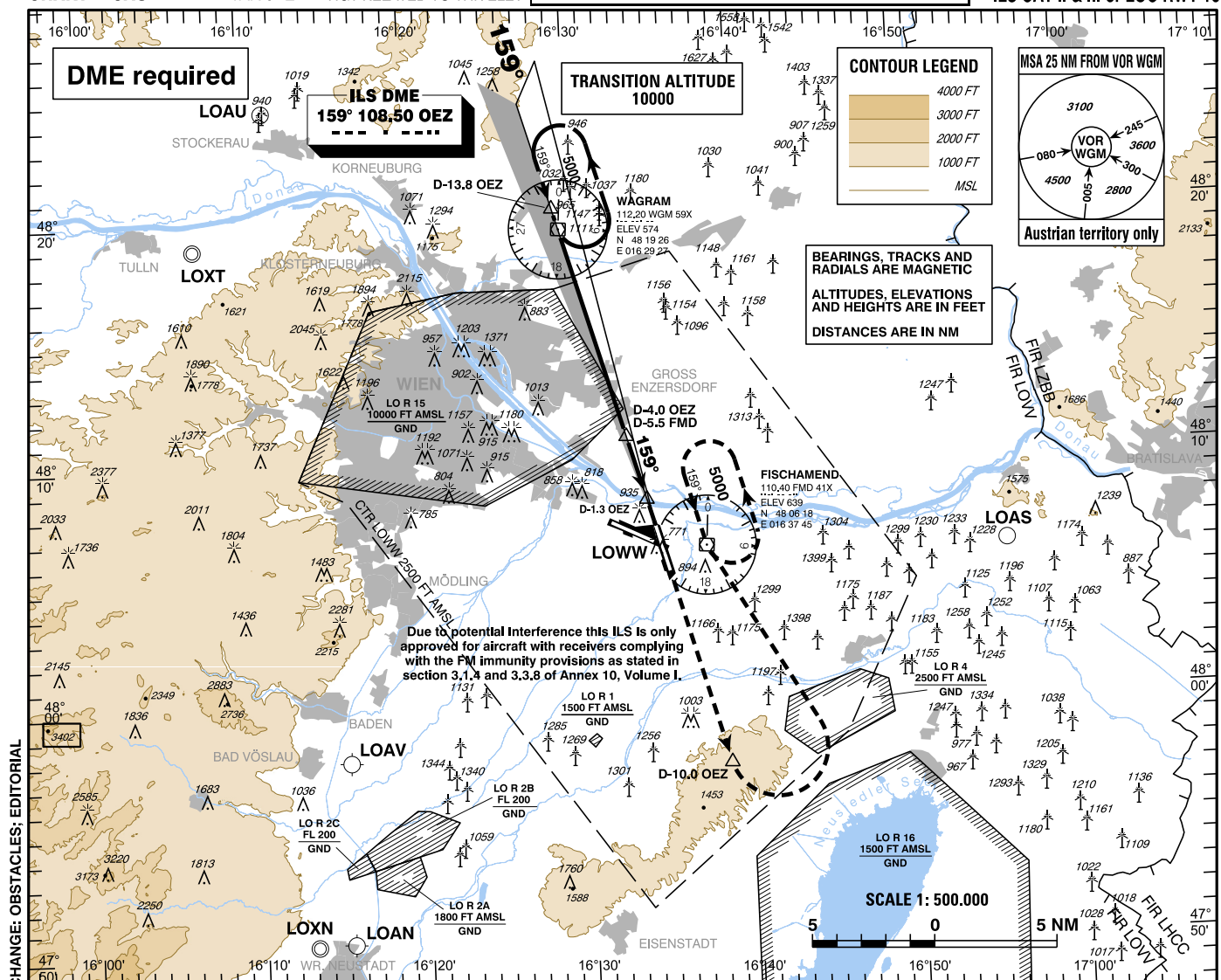
INSTRUMENT APPROACH CHART - ICAO

VAR 5° E

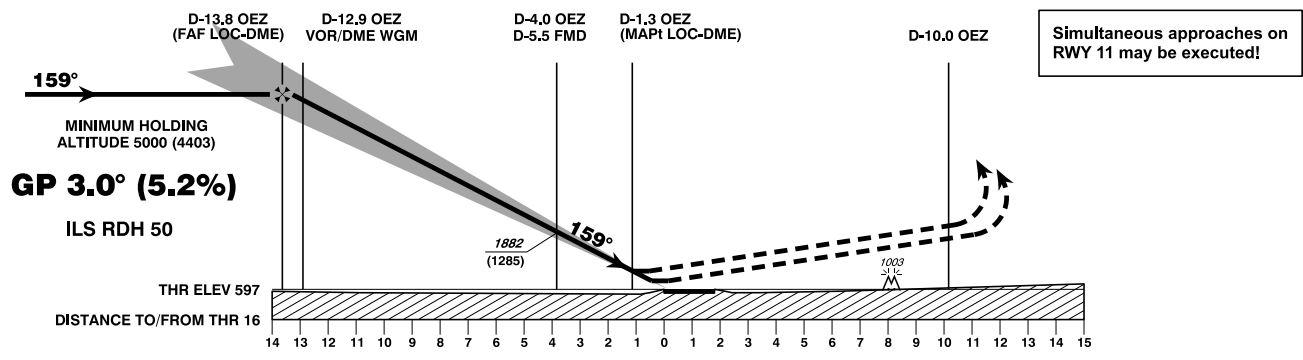
AD ELEV 600 FT
THR 16 ELEV 597 FT
HGT RELATED TO THR ELEV

Radar	134.675Mhz, 118.775Mhz, 124.550Mhz, 129.050Mhz
Arrival	119.800Mhz, 134.125Mhz
Tower	119.400Mhz, 123.800Mhz
Ground	121.600Mhz, 121.775Mhz
Delivery	122.125Mhz
Atis	122.955Mhz, 121.730Mhz

WIEN-SCHWECHAT (LOWW)
ÖSTERREICH AUSTRIA
ILS CAT II & III or LOC RWY 16



Due to potential interference this ILS is only approved for aircraft with receivers complying with the FM immunity provisions as stated in section 3.1.4 and 3.3.8 of Annex 10, Volume I.



MISSED APPROACH: CLIMB STRAIGHT AHEAD, AT D-10.0 OEZ TURN LEFT TO FMD; CLIMB TO 5000 FT AMSL AND HOLD. INFORM ATC IMMEDIATELY!

OCA (OCH) IN FT		A	B	C	D / D _L
STRAIGHT-IN APPROACH	CAT I Press. Altim.	730 (133)	742 (145)	751 (154)	761 (164)
	CAT II RDO Altim.	649 (52)	666 (69)	671 (74)	686 (89)
	CAT III	A P P R O V E D			
	LOC-DME	1200 (610)			

D-13.8 OEZ to THR 16 - DISTANCE 13.7 NM						
(Timing not authorized for defining the MAPt)						
GS (KT)	80	100	120	140	160	180
D-13.8 OEZ - THR 16	MIN : SEC	10:16	8:13	6:51	5:52	4:34
Rate of descent (5.2%)	FT / MIN	420	530	640	740	850

DME OEZ	13	12	11	10	9	8	7	6	5	4	3	2
DIST THR	12.8	11.8	10.8	9.8	8.8	7.8	6.8	5.8	4.8	3.8	2.8	1.8
ALT (HEIGHT)	4890 (4293)	4550 (3953)	4210 (3613)	3870 (3273)	3530 (2933)	3200 (2603)	2870 (2273)	2540 (1943)	2210 (1613)	1880 (1283)	1560 (963)	1240 (643)