

For Flight Simulation and non commercial use only !

Courtesy of Austro Control GmbH

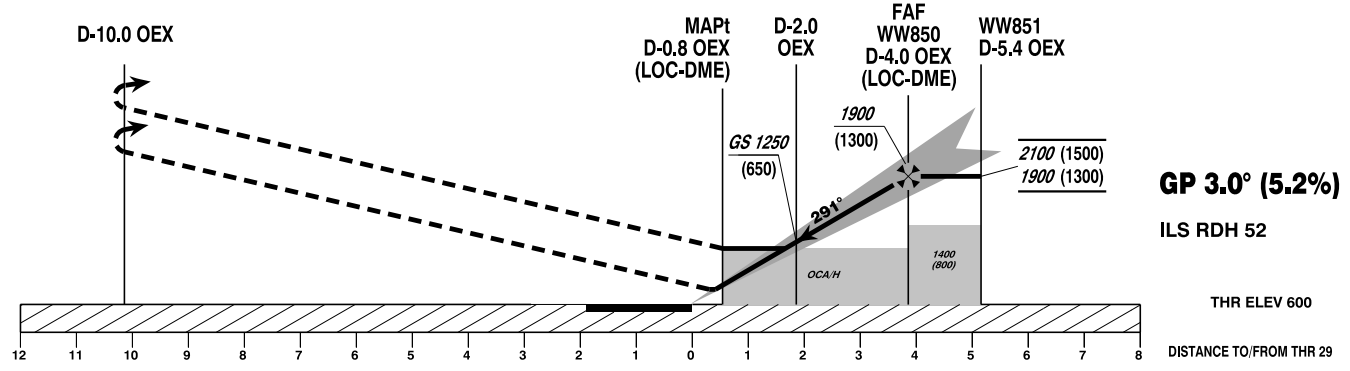
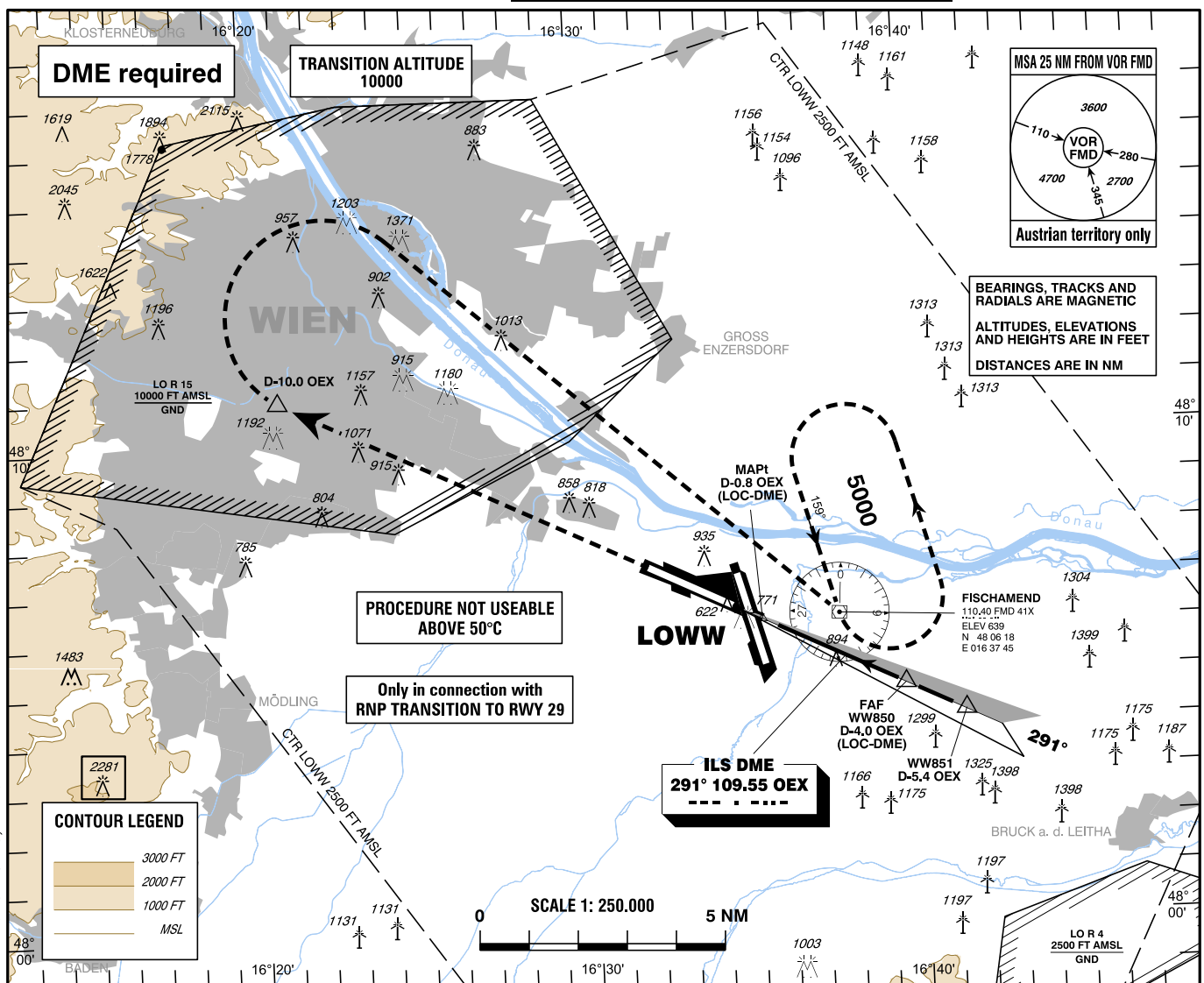
**INSTRUMENT APPROACH CHART - ICAO**

VAR 5° E

AD ELEV 600 FT  
THR 29 ELEV 600 FT  
HGT RELATED TO THR ELEV

Radar 134.675Mhz, 118.775Mhz, 124.550Mhz, 129.050Mhz  
Arrival 119.800Mhz, 134.125Mhz  
Tower 119.400Mhz, 123.800Mhz  
Ground 121.600Mhz, 121.775Mhz  
Delivery 122.125Mhz  
Atis 122.955Mhz, 121.730Mhz

**WIEN-SCHWECHAT (LOWW)**  
ÖSTERREICH AUSTRIA  
ILS U CAT II & III or LOC U RWY 29



**MISSED APPROACH: CLIMB STRAIGHT AHEAD, AT D-10.0 OEX TURN RIGHT DIRECT TO FMD; CLIMB TO 5000 FT AMSL AND HOLD.**

OCA (OCH) IN FT		A	B	C	D / D <sub>L</sub>
STRAIGHT-IN APPROACH	CAT I Press. Altim.	749 (149)	761 (161)	773 (173)	783 (183)
	CAT II RDO Altim.	661 (61)	678 (78)	690 (90)	708 (108)
	CAT III	A P P R O V E D			
LOC-DME		1220 (620)			

D-4.0 OEX to THR 29 - DISTANCE 3.9 NM							
(Timing not authorized for defining the MAPt)							
	GS (KT)	80	100	120	140	160	180
D-4.0 OEX - THR 29	MIN : SEC	2:56	2:20	1:57	1:40	1:28	1:18
Rate of descent (5.2%)	FT / MIN	420	530	640	740	850	960

DME OEX	3	2	1
DIST THR	2.9	1.9	0.9
ALT (HEIGHT)	1560 (960)	1240 (640)	920 (320)