

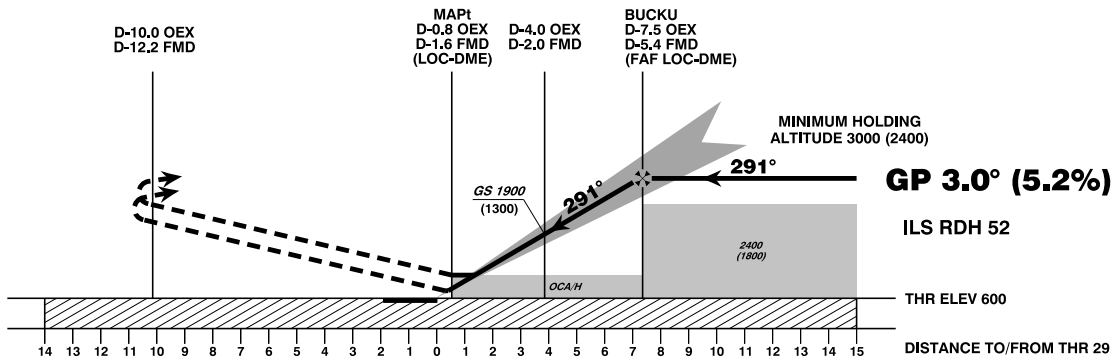
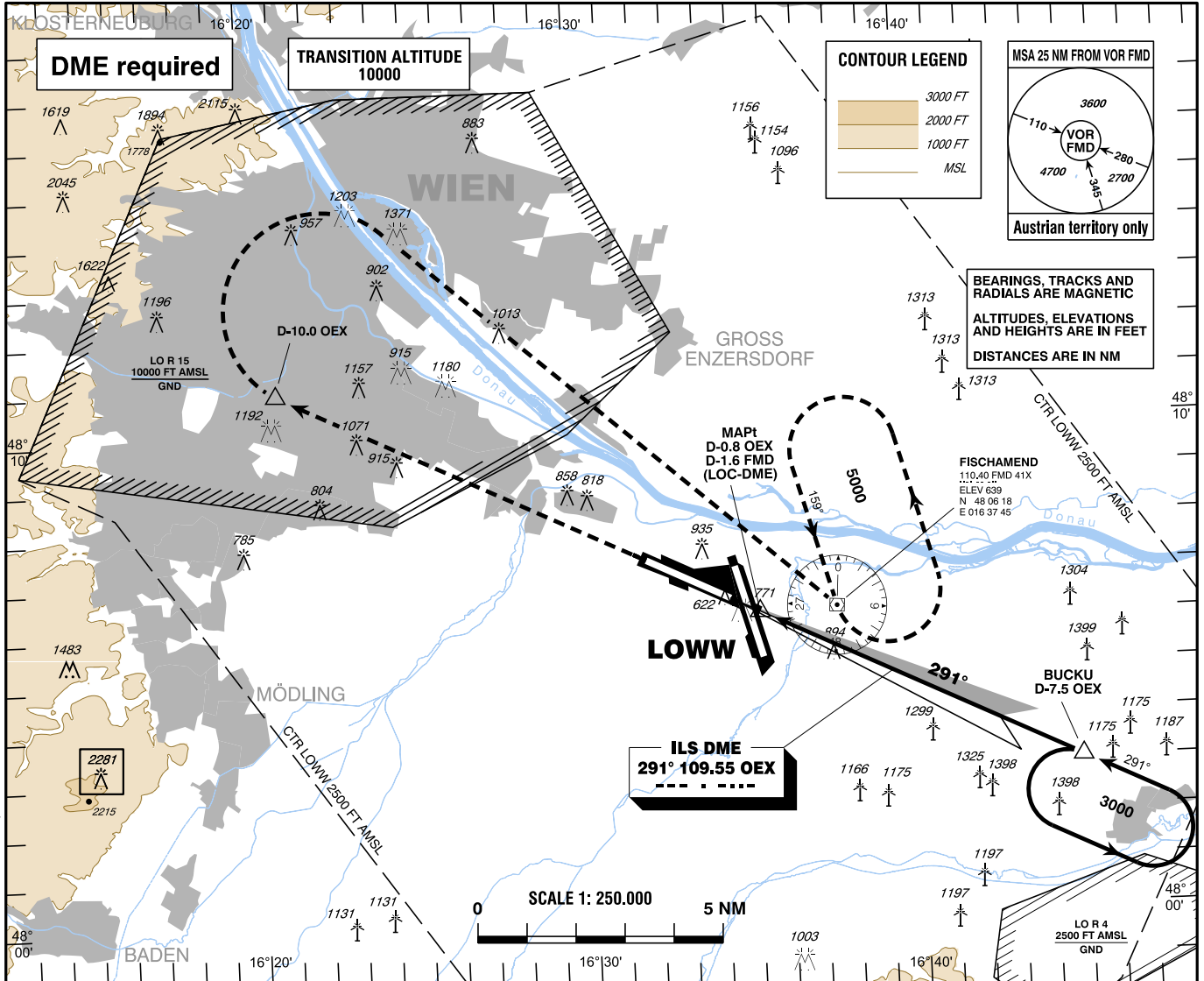
INSTRUMENT APPROACH CHART - ICAO

VAR 5° E

AD ELEV 600 FT
THR 29 ELEV 600 FT
HGT RELATED TO THR ELEV

Radar	134.675Mhz, 118.775Mhz, 124.550Mhz, 129.050Mhz
Arrival	119.800Mhz, 134.125Mhz
Tower	119.400Mhz, 123.800Mhz
Ground	121.600Mhz, 121.775Mhz
Delivery	122.125Mhz
Atis	122.955Mhz, 121.730Mhz

WIEN-SCHWECHAT (LOWW)
ÖSTERREICH AUSTRIA
ILS Z CAT II & III or LOC Z RWY 29



MISSED APPROACH: CLIMB STRAIGHT AHEAD, AT D-10.0 OEX TURN RIGHT DIRECT TO FMD; CLIMB TO 5000 FT AMSL AND HOLD.

OCA (OCH) IN FT		A	B	C	D / D _L
STRAIGHT-IN APPROACH	CAT I Press. Altim.	749 (149)	761 (161)	773 (173)	783 (183)
	CAT II RDO Altim.	661 (61)	678 (78)	690 (90)	708 (108)
	CAT III	A P P R O V E D			
LOC-DME		1220 (620)			

D-7.5 OEX to THR 29 - DISTANCE 7.4 NM							
(Timing not authorized for defining the MAPt)							
	GS (KT)	80	100	120	140	160	180
D-7.5 OEX - THR 29	MIN : SEC	5:32	4:25	3:41	3:10	2:46	2:27
Rate of descent (5.2%)	FT / MIN	420	530	640	740	850	960

DME OEX	7	6	5	4	3	2
DIST THR	6.9	5.9	4.9	3.9	2.9	1.9
ALT (HEIGHT)	2840 (2240)	2520 (1920)	2200 (1600)	1880 (1280)	1560 (960)	1240 (640)