

For Flight Simulation and non commercial use only !
 Courtesy of Austro Control GmbH
vacc AUSTRIA

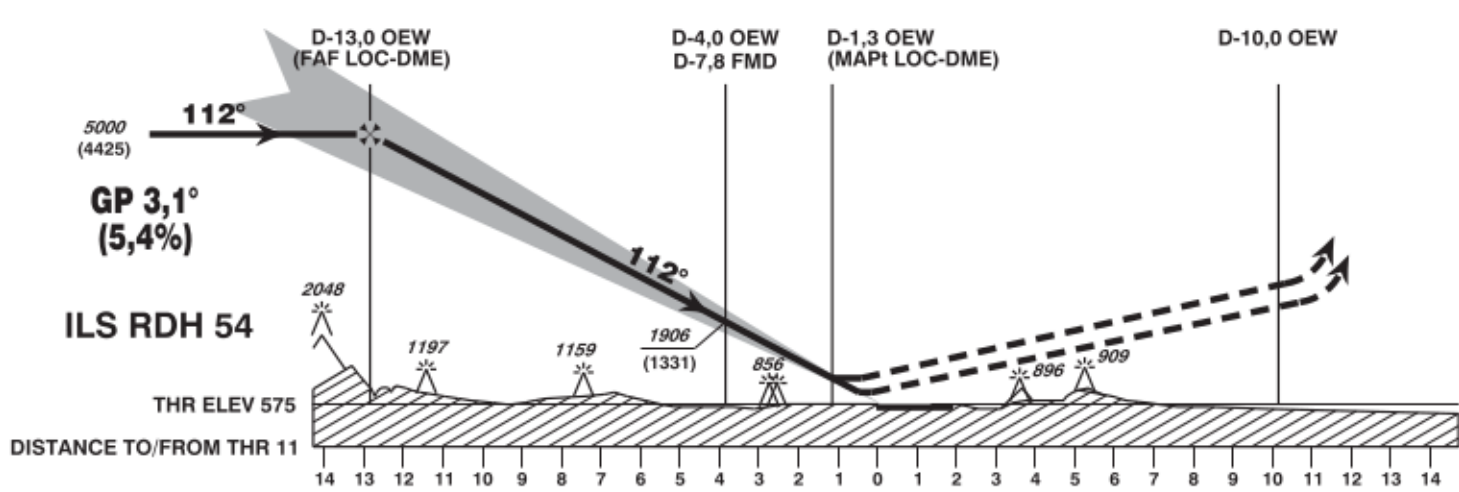
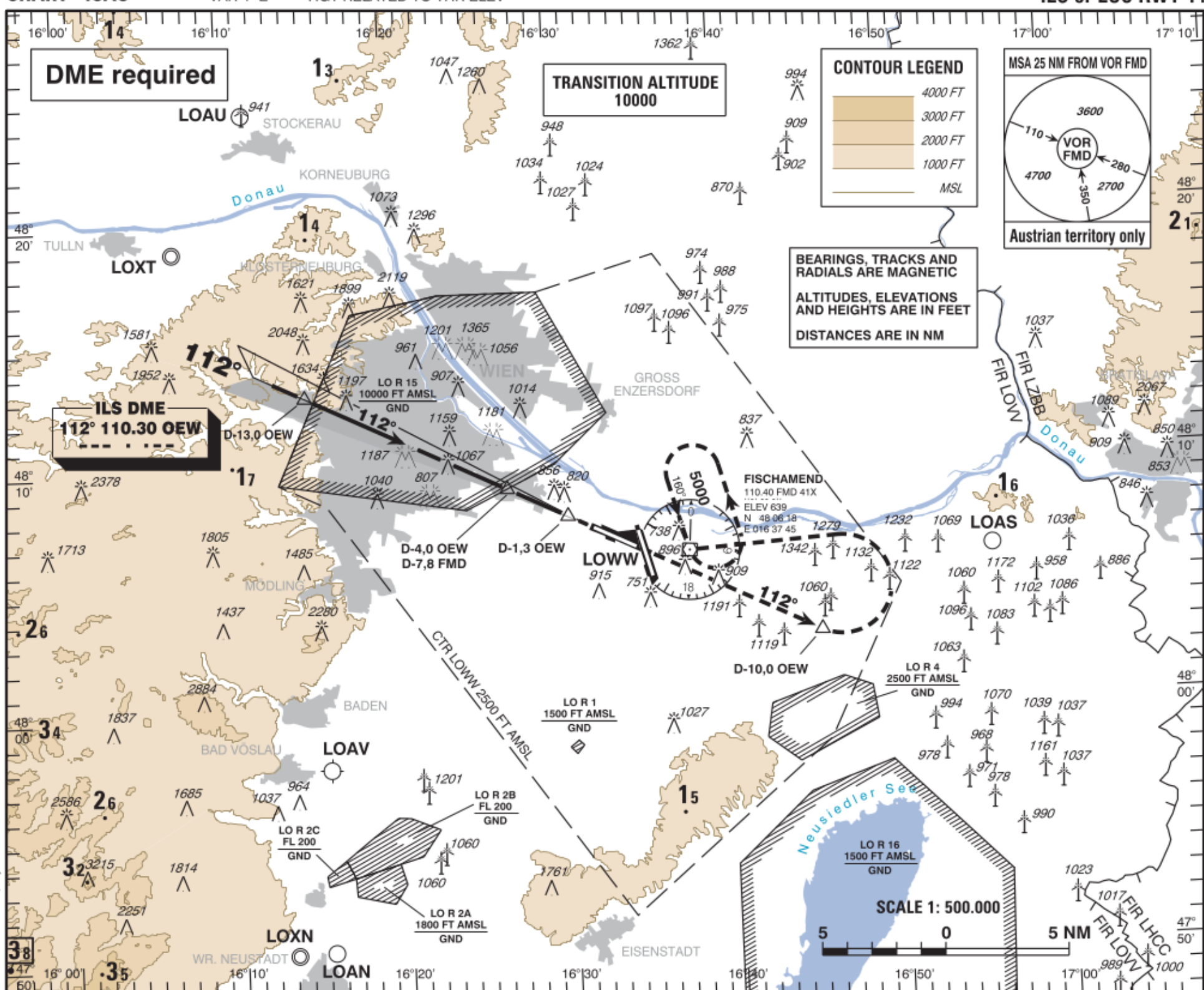
INSTRUMENT APPROACH CHART - ICAO

VAR 4° E

AD ELEV 600 FT
THR 11 ELEV 575 FT
HGT RELATED TO THR ELEV

Radar 134.670Mhz, 118.770Mhz, 124.550Mhz, 129.050Mhz
Director 119.800Mhz
Tower 119.400Mhz, 123.800Mhz
Ground 121.600Mhz, 121.770Mhz
Delivery 122.120Mhz
Atis 122.950 Mhz

WIEN-SCHWECHAT
ÖSTERREICH AUSTRIA
ILS or LOC RWY 11



MISSED APPROACH: CLIMB STRAIGHT AHEAD, AT D-10,0 OEW TURN LEFT TO FMD; CLIMB TO 5000 FT AMSL AND HOLD.

OCA (OCH) IN FT		A	B	C	D / D _L
STRAIGHT-IN APPROACH	CAT I Press. Altim.	719 (144)	731 (156)	739 (164)	750 (175)
	LOC-DME	1200 (630)			

D-13,0 OEW to THR 11 - DISTANCE 12,8 NM							
(Timing not authorized for defining the MAPT)							
	GS (KT)	80	100	120	140	160	180
D-13,0 OEW - THR 11	MIN : SEC	9:36	7:41	6:24	5:29	4:48	4:16
Rate of descent (5,4%)	FT / MIN	460	570	680	800	910	1020

IF NOT OTHERWISE INSTRUCTED BY ATC, CROSS D-4,0 OEW WITH IAS 160 KT OR LESS

DME OEW	12	11	10	9	8	7	6	5	4	3	2
DIST THR	11,8	10,8	9,8	8,8	7,8	6,8	5,8	4,8	3,8	2,8	1,8
ALT (HEIGHT)	4650 (4075)	4300 (3725)	3950 (3375)	3610 (3035)	3260 (2685)	2920 (2345)	2580 (2005)	2240 (1665)	1900 (1325)	1570 (995)	1240 (665)