

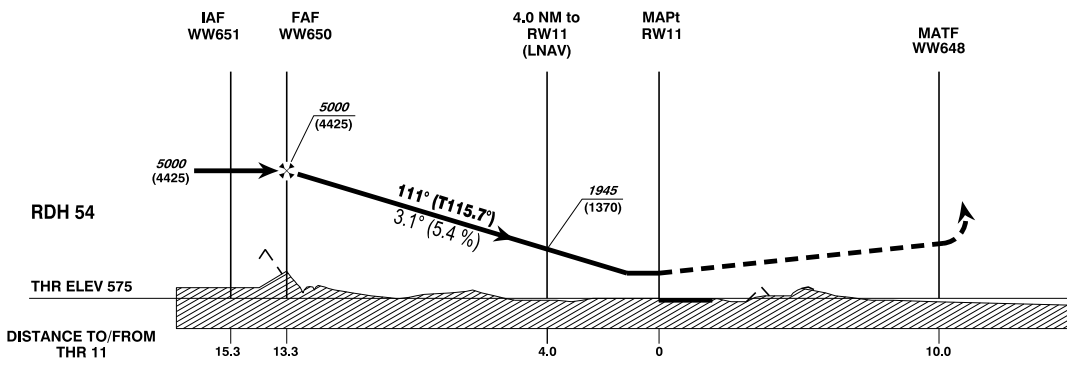
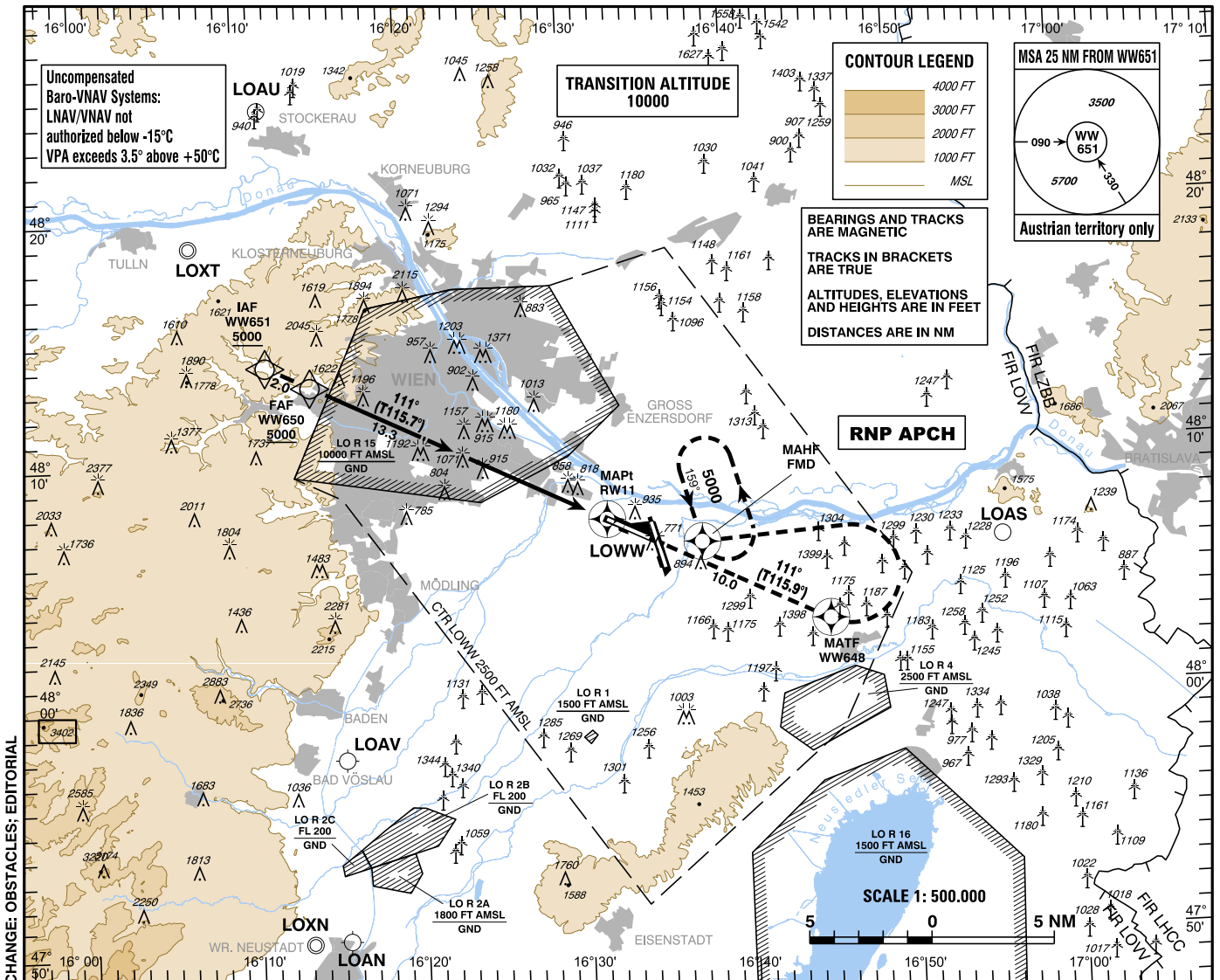
INSTRUMENT APPROACH CHART - ICAO

AD ELEV 600 FT
THR 11 ELEV 575 FT
HGT RELATED TO THR ELEV
VAR 5° E

EGNOS
CH 44270
E11A

Radar 134.675Mhz, 118.775Mhz, 124.550Mhz, 129.050Mhz
Arrival 119.800Mhz, 134.125Mhz
Tower 119.400Mhz, 123.800Mhz
Ground 121.600Mhz, 121.775Mhz
Delivery 122.125Mhz
Atis 122.955Mhz, 121.730Mhz

WIEN-SCHWECHAT (LOWW)
ÖSTERREICH AUSTRIA
RNP RWY 11



MISSED APPROACH: CLIMB STRAIGHT AHEAD, AT WW648 TURN LEFT DIRECT TO FMD; CLIMB TO 5000 FT AMSL AND HOLD.

OCA (OCH) IN FT	A	B	C	D / D _L
LNAV	1200 (630)			
LNAV/VNAV	950 (375)	963 (388)	971 (396)	981 (406)
LPV	719 (144)	731 (156)	739 (164)	750 (175)

WW650 to RW11 - DISTANCE 13.3 NM							
(Timing not authorized for defining the MAPt)							
	GS (KT)	80	100	120	140	160	180
WW650 - RW11	MIN : SEC	9:59	7:59	6:39	5:42	4:59	4:26
Rate of descent (5.4%)	FT / MIN	440	550	660	770	880	990

DIST In NM to RW11	13	12	11	10	9	8	7	6	5	4	3	2
ALTITUDE (HEIGHT)	4910 (4335)	4580 (4005)	4250 (3675)	3920 (3345)	3590 (3015)	3260 (2685)	2930 (2355)	2600 (2025)	2270 (1695)	1940 (1365)	1620 (1045)	1290 (715)

**Instrument Approach Procedure Coding Table
Wien-Schwechat RNP RWY 11**

Path Terminator	Waypoint				Course/Track ° MAG (° True)	DIST NM	Turn Direction	Constraints		Navigation Specification	Remarks
	Identifier	Type	Flyover	Coordinates				Level	Speed		
IF	WW651	IAF	no	N481401.04 E0161125.92				A5000+		RNP APCH	
TF	WW650	FAF	no	N481309.05 E0161407.70	111° (115.7°)	2.0		A5000+		RNP APCH	
TF	RW11	MAPt	yes	N480722.13 E0163200.09	111° (115.7°)	13.3				RNP APCH	
TF	WW648	MATF	yes	N480259.20 E0164524.67	111° (115.9°)	10.0				RNP APCH	
DF	FMD	MAHF	yes	N480618.41 E0163745.35			left	A5000+		RNP APCH	
RNAV Holding											
Holding Point	Inbound Track ° True	Inbound Track ° MAG	Turn Direction	MAX IAS	Minimum Holding Altitude FT MSL / FL	Time	DIST NM	Remarks			
FMD	163.6°	159°	left		A5000	1 MIN					

**SBAS FAS Data Block Coding Table
Wien-Schwechat RNP RWY 11**

Input data

Operation Type	0
SBAS Provider	1 (EGNOS)
Airport Identifier	LOWW
Runway	11
Runway Letter	0 (None)
Approach Performance Designator	0
Route Indicator	
Reference Path Data Selector	0
Reference Path Identifier	E11A
LTP/FTP Latitude	480722.1300N
LTP/FTP Longitude	0163200.0900E
LTP/FTP Ellipsoidal Height (metres)	219.0
FPAP Latitude	480620.5800N
Delta FPAP Latitude (seconds)	-61.5500
FPAP Longitude	0163509.0220E
Delta FPAP Longitude (seconds)	188.9320
Threshold Crossing Height	54.0
TCH Units Selector	0 (feet)
Glidepath Angle (degrees)	3.10
Course Width (metres)	107.00
Length Offset (metres)	848
HAL (metres)	40.0
VAL (metres)	35.0

Output data

Data Block	10 17 17 0F 0C 0B 00 00 01 31 31 05 24 EE A6 14 B4 68 18 07 8E 1C 24 1F FE 08 C4 05 1C 02 36 01 6C 6A C8 AF D4 09 7A 20
Calculated CRC Value	D4097A20

Required Additional Data

ICAO Code	LO
LTP/FTP Orthometric Height (metres)	175.0