

**INSTRUMENT APPROACH CHART - ICAO**

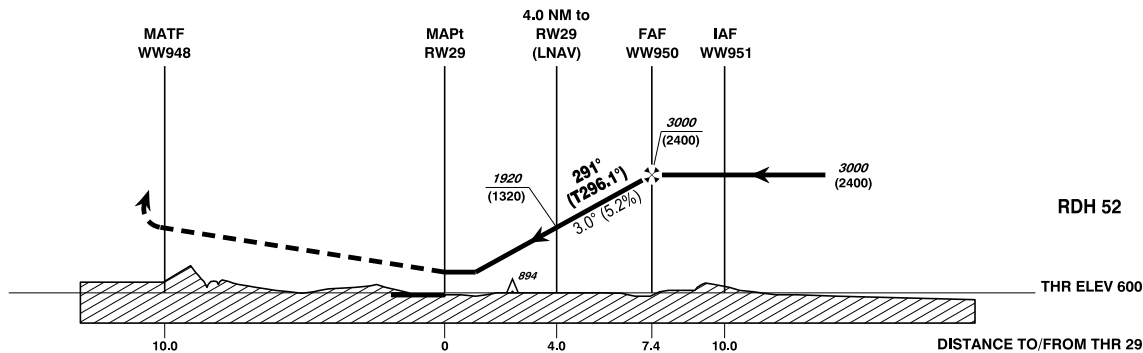
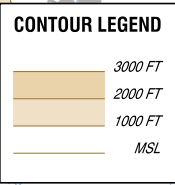
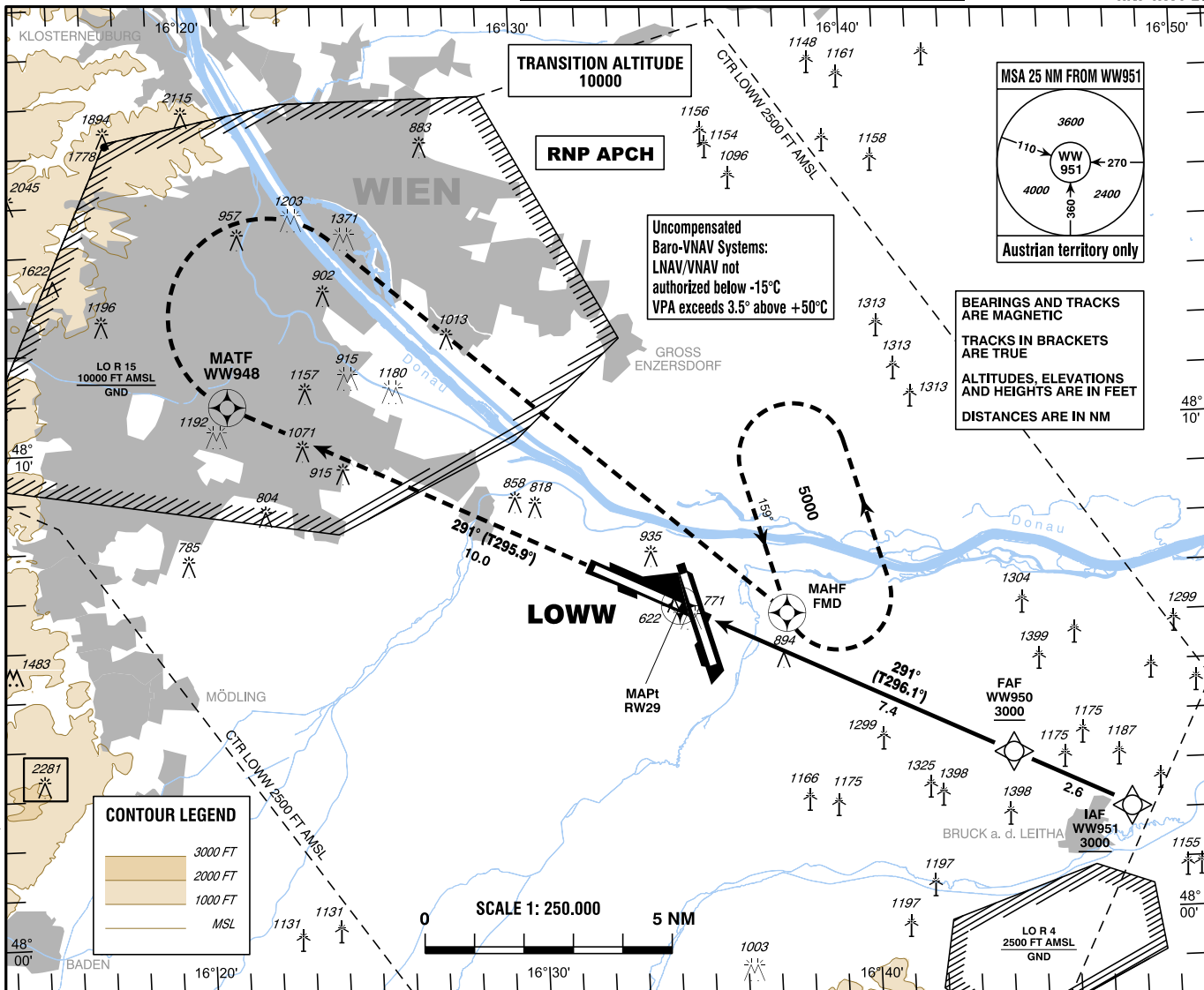
AD ELEV 600 FT  
THR 29 ELEV 600 FT  
HGT RELATED TO THR ELEV

EGNOS  
CH 92392  
E29A

VAR 5° E

Radar 134.675Mhz, 118.775Mhz, 124.550Mhz, 129.050Mhz  
Arrival 119.800Mhz, 134.125Mhz  
Tower 119.400Mhz, 123.800Mhz  
Ground 121.600Mhz, 121.775Mhz  
Delivery 122.125Mhz  
Atis 122.955Mhz, 121.730Mhz

**WIEN-SCHWECHAT (LOWW)**  
ÖSTERREICH AUSTRIA  
RNP RWY 29



**MISSED APPROACH:** CLIMB STRAIGHT AHEAD, AT WW948 TURN RIGHT DIRECT TO FMD;  
CLIMB TO 5000 FT AMSL AND HOLD.

OCA (OCH) IN FT	A	B	C	D / D <sub>L</sub>
LNAV	1200 (600)			
LNAV/VNAV	918 (318)	930 (330)	949 (349)	990 (390)
LPV	752 (152)	764 (164)	772 (172)	783 (183)

**WW950 to RW29 - DISTANCE 7.4 NM**  
(Timing not authorized for defining the MAPt)

	GS (KT)	80	100	120	140	160	180
WW950 - RW29	MIN : SEC	5:33	4:26	3:42	3:10	2:47	2:28
Rate of descent (5.2%)	FT / MIN	420	530	640	740	850	960

DIST in NM to RW29	7	6	5	4	3	2
ALTITUDE (HEIGHT)	2880 (2280)	2560 (1960)	2240 (1640)	1920 (1320)	1610 (1010)	1290 (690)

**Instrument Approach Procedure Coding Table  
Wien-Schwechat RNP RWY 29**

Path Terminator	Waypoint				Course/Track ° MAG (° True)	DIST NM	Turn Direction	Constraints		Navigation Specification	Remarks
	Identifier	Type	Flyover	Coordinates				Level	Speed		
IF	WW951	IAF	no	N480207.16 E0164754.80				A3000+		RNP APCH	
TF	WW950	FAF	no	N480318.66 E0164425.33	291° (297.0°)	2.6		A3000+		RNP APCH	
TF	RW29	MAPt	yes	N480632.57 E0163432.27	291° (296.1°)	7.4				RNP APCH	
TF	WW948	MATF	yes	N481054.23 E0162105.86	291° (295.9°)	10.0				RNP APCH	
DF	FMD	MAHF	yes	N480618.41 E0163745.35			right	A5000+		RNP APCH	
<b>RNAV Holding</b>											
Holding Point	Inbound Track ° True	Inbound Track ° MAG	Turn Direction	MAX IAS	Minimum Holding Altitude FT MSL / FL	Time	DIST NM	Remarks			
FMD	163.6°	159°	left		A5000	1 MIN					

**SBAS FAS Data Block Coding Table  
Wien-Schwechat RNP RWY 29**

**Input data**

Operation Type	0
SBAS Provider	1 (EGNOS)
Airport Identifier	LOWW
Runway	29
Runway Letter	0 (None)
Approach Performance Designator	0
Route Indicator	
Reference Path Data Selector	0
Reference Path Identifier	E29A
LTP/FTP Latitude	480632.5700N
LTP/FTP Longitude	0163432.2680E
LTP/FTP Ellipsoidal Height (metres)	227.0
FPAP Latitude	480723.8620N
Delta FPAP Latitude (seconds)	51.2920
FPAP Longitude	0163154.7490E
Delta FPAP Longitude (seconds)	-157.5190
Threshold Crossing Height	52.0
TCH Units Selector	0 (feet)
Glidepath Angle (degrees)	3.00
Course Width (metres)	103.00
Length Offset (metres)	128
HAL (metres)	40.0
VAL (metres)	35.0

**Output data**

Data Block	10 17 17 0F 0C 1D 00 00 01 39 32 05 F4 6A A5 14 98 0D 1D 07 DE 1C B8 90 01 62 31 FB 08 02 2C 01 5C 10 C8 AF EF 9D 33 77
Calculated CRC Value	EF9D3377

**Required Additional Data**

ICAO Code	LO
LTP/FTP Orthometric Height (metres)	183.0