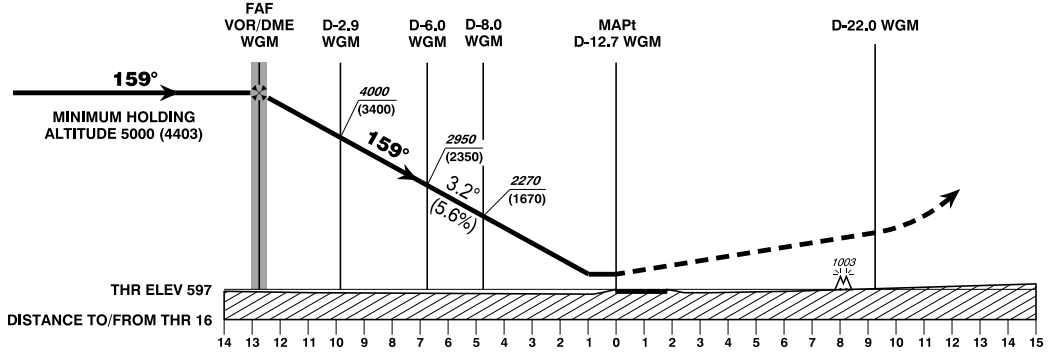
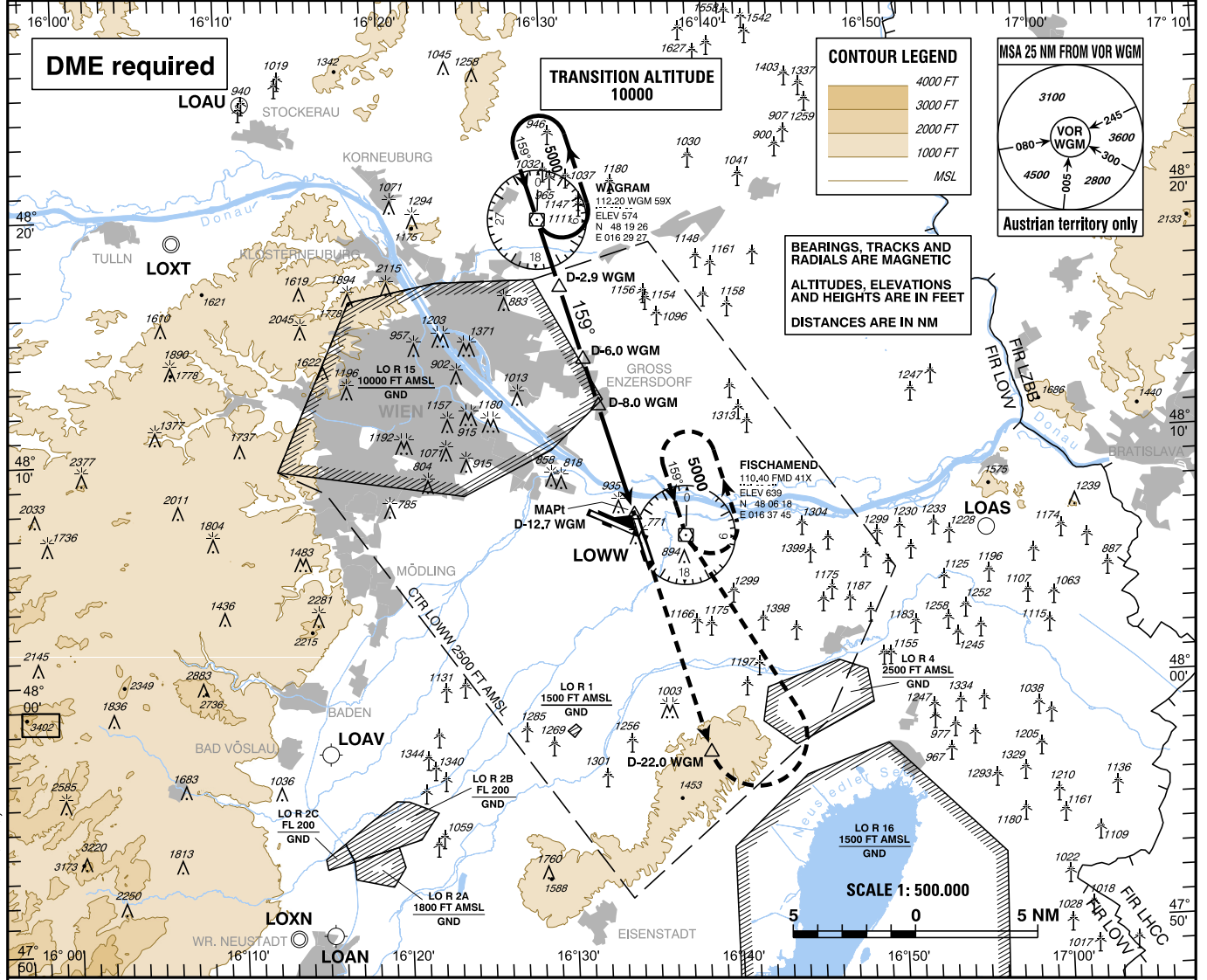


For Flight Simulation and non commercial use only!

Courtesy of Austro Control GmbH

INSTRUMENT APPROACH CHART - ICAO **AD ELEV 600 FT** **THR 16 ELEV 597 FT** **VAR 5° E** **HGT RELATED TO AD ELEV** **Wien-Schwechat (LOWW)** **ÖSTERREICH AUSTRIA** **VOR RWY 16**

Radar	134.675Mhz, 118.775Mhz, 124.550Mhz, 129.050Mhz
Arrival	119.800Mhz, 134.125Mhz
Tower	119.400Mhz, 123.800Mhz
Ground	121.600Mhz, 121.775Mhz
Delivery	122.125Mhz
Atis	122.955Mhz, 121.730Mhz



MISSED APPROACH: CLIMB STRAIGHT AHEAD, AT D-22.0 WGM TURN LEFT TO FMD; CLIMB TO 5000 FT AMSL AND HOLD.

OCA (OCH) IN FT		A	B	C	D
STRAIGHT-IN APPROACH	VOR/DME	1200 (600)			

VOR/DME WGM to THR 16 - DISTANCE 12.7 NM							
(Timing not authorized for defining the MAPt)							
	GS (KT)	80	100	120	140	160	180
VOR/DME WGM - THR 16	MIN : SEC	9:32	7:37	6:21	5:27	4:46	4:14
Rate of descent (5.6%)	FT / MIN	460	570	690	800	910	1030

DME WGM	1	2	3	4	5	6	7	8	9	10	11
DIST THR	11.7	10.7	9.7	8.7	7.7	6.7	5.7	4.7	3.7	2.7	1.7
ALT (HEIGHT)	4660 (4063)	4320 (3723)	3980 (3383)	3630 (3033)	3290 (2693)	2950 (2353)	2610 (2013)	2270 (1673)	1930 (1333)	1580 (983)	1240 (643)