

For Flight Simulation and non commercial use only !

Courtesy of Austro Control GmbH

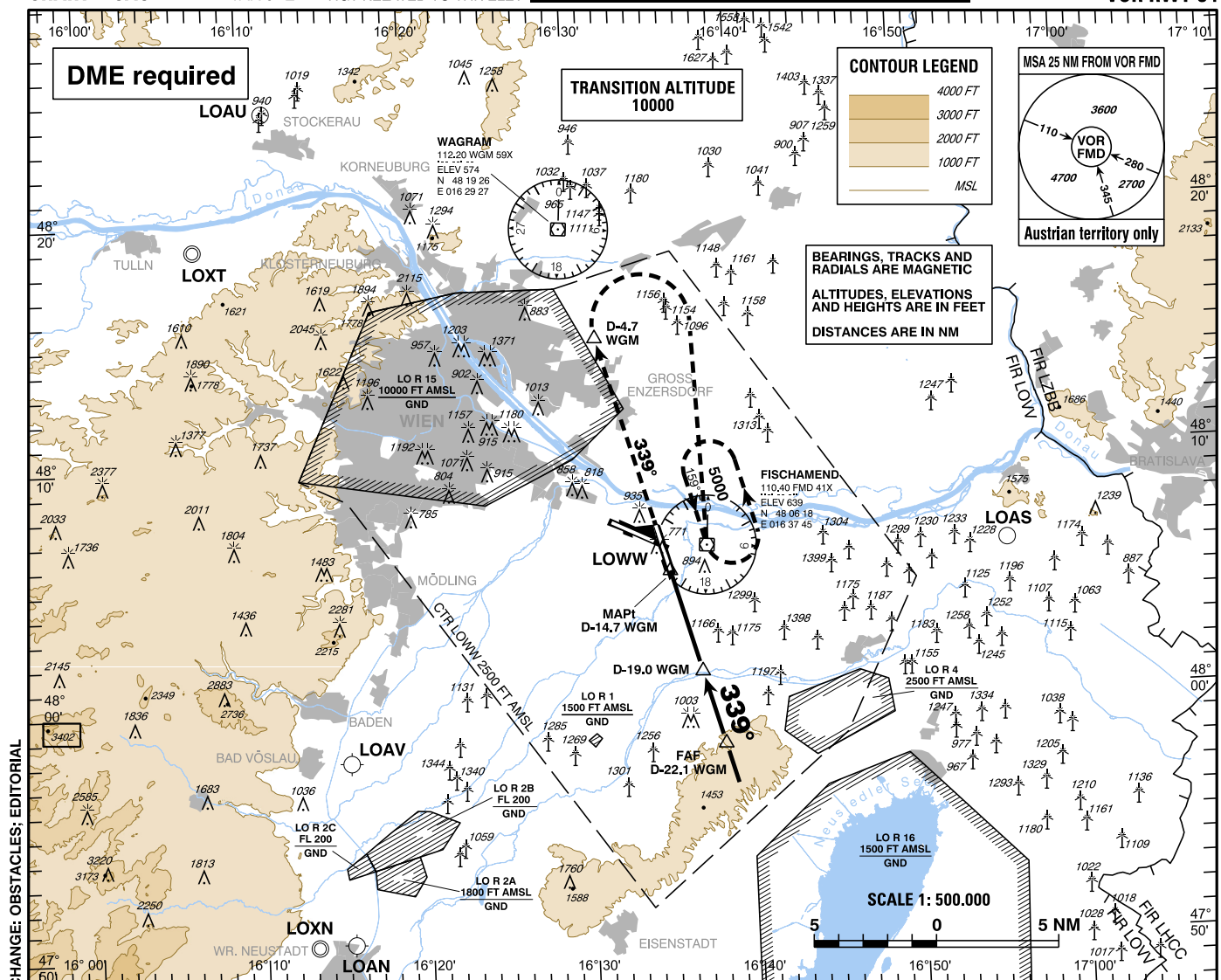
INSTRUMENT APPROACH CHART - ICAO

VAR 5° E

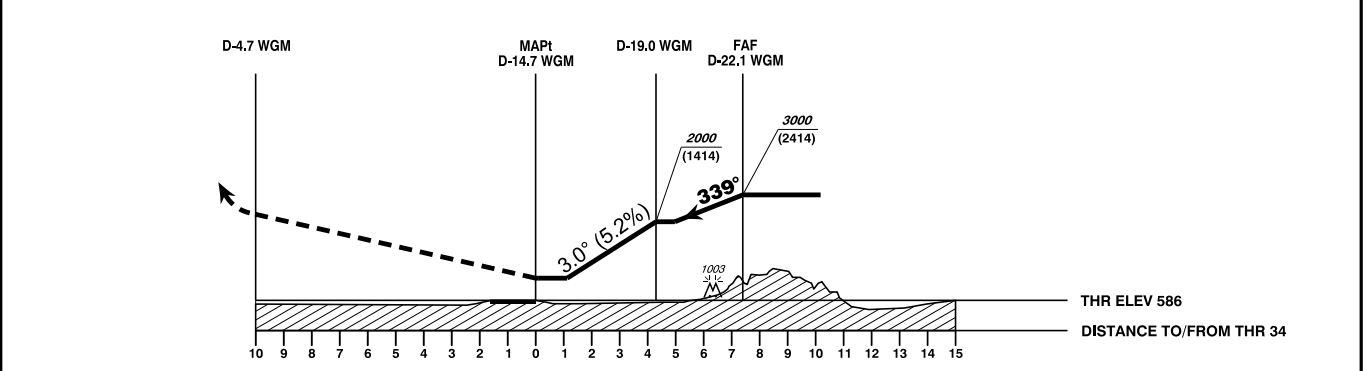
AD ELEV 600 FT
THR 34 ELEV 586 FT
HGT RELATED TO THR ELEV

Radar	134.675Mhz, 118.775Mhz, 124.550Mhz, 129.050Mhz
Arrival	119.800Mhz, 134.125Mhz
Tower	119.400Mhz, 123.800Mhz
Ground	121.600Mhz, 121.775Mhz
Delivery	122.125Mhz
Atis	122.955Mhz, 121.730Mhz

WIEN-SCHWECHAT (LOWW)
ÖSTERREICH AUSTRIA
VOR RWY 34



CHANGE: OBSTACLES; EDITORIAL



MISSED APPROACH: CLIMB STRAIGHT AHEAD, AT D-4.7 WGM TURN RIGHT TO FMD; CLIMB TO 5000 FT AMSL AND HOLD.

OCA (OCH) IN FT		A	B	C	D
STRAIGHT-IN APPROACH	VOR/DME	1430 (850)			

D-22.1 WGM to THR 34 - DISTANCE 7.4 NM							
(Timing not authorized for defining the MAPt)							
	GS (KT)	80	100	120	140	160	180
D-22.1 WGM - THR 34	MIN : SEC	5:33	4:26	3:42	3:10	2:47	2:28
Rate of descent (5.2%)	FT / MIN	420	530	640	740	850	960

DME WGM	19	18
DIST THR	4.3	3.3
ALT (HEIGHT)	2000 (1414)	1680 (1094)