

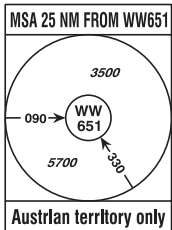
Radar	134.675Mhz, 118.775Mhz, 124.550Mhz, 129.050Mhz
Arrival	119.800Mhz, 134.125Mhz
Tower	119.400Mhz, 123.800Mhz
Ground	121.600Mhz, 121.775Mhz
Delivery	122.125Mhz
Atis	122.955Mhz, 121.730Mhz

IF UNABLE TO FOLLOW  
TRANSITION ADVISE  
ATC IMMEDIATELY !

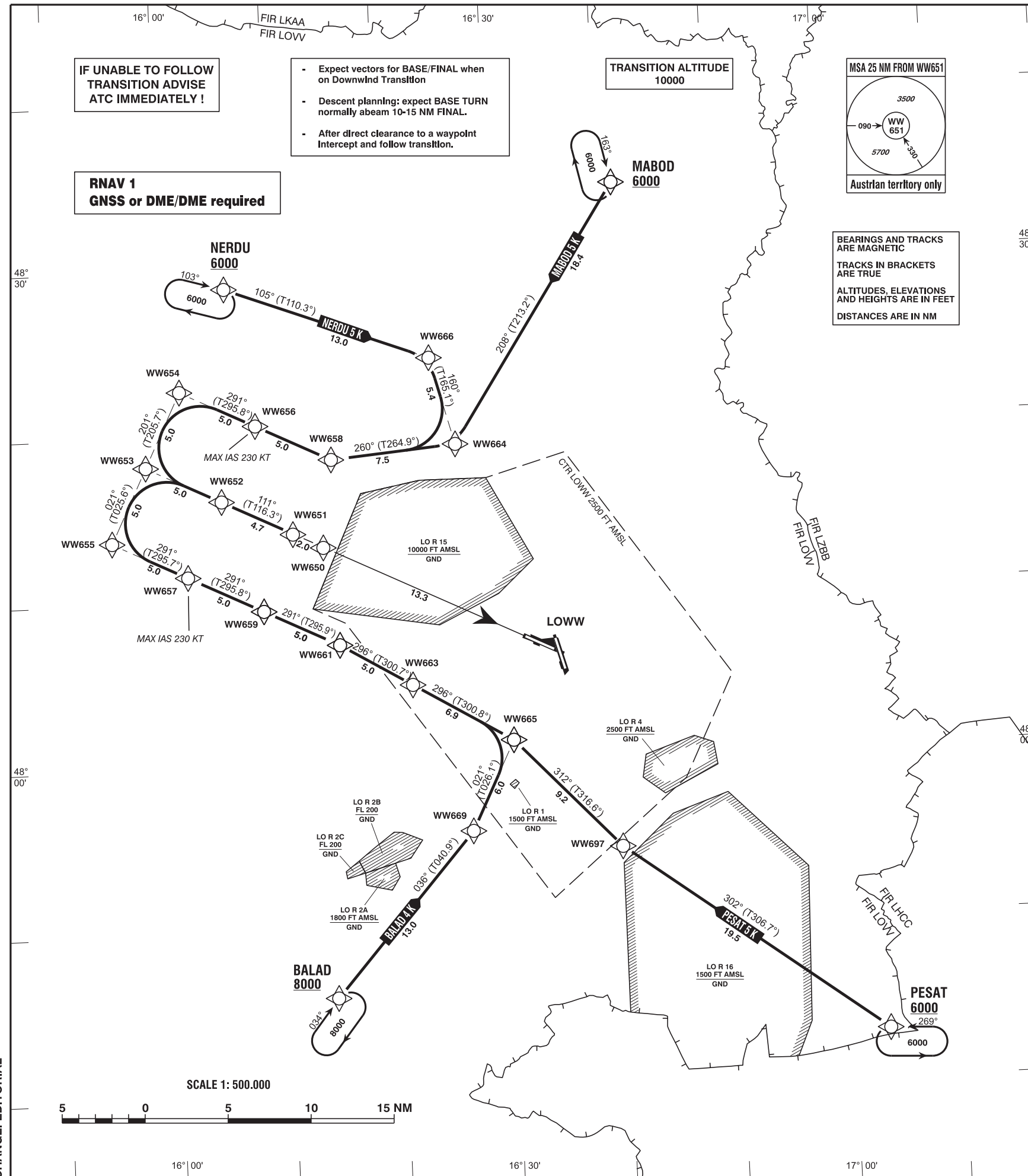
- Expect vectors for BASE/FINAL when on Downwind Transition
- Descent planning: expect BASE TURN normally abeam 10-15 NM FINAL.
- After direct clearance to a waypoint Intercept and follow transition.

RNAV 1  
GNSS or DME/DME required

TRANSITION ALTITUDE  
10000



BEARINGS AND TRACKS  
ARE MAGNETIC  
TRACKS IN BRACKETS  
ARE TRUE  
ALTITUDES, ELEVATIONS  
AND HEIGHTS ARE IN FEET  
DISTANCES ARE IN NM



Intentionally left blank

For Flight Simulation and non commercial use only !  
Courtesy of Austro Control GmbH

vacc  
AUSTRIA

CHANGE: EDITORIAL

Designator	Route							Remarks		
<b>BALAD 4 K</b> Balad four kilo transition	BALAD - WW669 - WW665 - WW663 - WW661 - WW659 - WW657 - WW655 - WW653 - WW652 - WW651									
RNAV Transition Coding Table of BALAD 4 K										
Path Terminator	Waypoint			Course/ Track ° MAG (° True)	DIST NM	Turn Direction	Constraints		Navigation Specification	Remarks
	Identifier	Flyover	Coordinates				Level	Speed		
IF	BALAD	no	N474600.21 E0161402.56				A8000+		RNAV 1	
TF	WW669	no	N475546.40 E0162639.74	036° (040.9°)	13.0		A5000+		RNAV 1	
TF	WW665	no	N480109.57 E0163035.57	021° (026.1°)	6.0	left	A5000+		RNAV 1	
TF	WW663	no	N480442.08 E0162143.48	296° (300.8°)	6.9	left	A5000+		RNAV 1	
TF	WW661	no	N480715.12 E0161518.46	296° (300.7°)	5.0		A5000+		RNAV 1	
TF	WW659	no	N480925.86 E0160835.23	291° (295.9°)	5.0	left	A5000+		RNAV 1	
TF	WW657	no	N481136.21 E0160151.44	291° (295.8°)	5.0		A5000+	K230-	RNAV 1	
TF	WW655	no	N481346.17 E0155507.08	291° (295.7°)	5.0		A5000+		RNAV 1	
TF	WW653	no	N481816.47 E0155821.58	021° (025.6°)	5.0	right	A5000+		RNAV 1	
TF	WW652	no	N481606.33 E0160506.38	111° (115.7°)	5.0	right	A5000+		RNAV 1	
TF	WW651	no	N481401.04 E0161125.92	111° (116.3°)	4.7		A5000+		RNAV 1	

Designator	Route	Remarks
<b>MABOD 5 K</b> Mabod five kilo transition	MABOD - WW664 - WW658 - WW656 - WW654 - WW653 - WW652 - WW651	

**RNAV Transition Coding Table of MABOD 5 K**

Path Terminator	Waypoint			Course/ Track ° MAG (° True)	DIST NM	Turn Direction	Constraints		Navigation Specification	Remarks
	Identifier	Flyover	Coordinates				Level	Speed		
IF	MABOD	no	N483428.41 E0164124.35				A6000+		RNAV 1	
TF	WW664	no	N481906.20 E0162621.72	208° (213.2°)	18.4		A5000+		RNAV 1	
TF	WW658	no	N481825.63 E0161506.57	260° (264.9°)	7.5	right	A5000+		RNAV 1	
TF	WW656	no	N482036.35 E0160821.89	291° (295.9°)	5.0	right	A5000+	K230-	RNAV 1	
TF	WW654	no	N482246.68 E0160136.63	291° (295.8°)	5.0		A5000+		RNAV 1	
TF	WW653	no	N481816.47 E0155821.58	201° (205.7°)	5.0	left	A5000+		RNAV 1	
TF	WW652	no	N481606.33 E0160506.38	111° (115.7°)	5.0	left	A5000+		RNAV 1	
TF	WW651	no	N481401.04 E0161125.92	111° (116.3°)	4.7		A5000+		RNAV 1	

For Flight Simulation and non commercial use only !

Courtesy of Austro Control GmbH

Designator	Route							Remarks		
<b>NERDU 5 K</b> Nerdu five kilo transition	NERDU - WW666 - WW664 - WW658 - WW656 - WW654 - WW653 - WW652 - WW651									
RNAV Transition Coding Table of NERDU 5 K										
Path Terminator	Waypoint			Course/ Track ° MAG (° True)	DIST NM	Turn Direction	Constraints		Navigation Specification	Remarks
	Identifier	Flyover	Coordinates				Level	Speed		
IF	NERDU	no	N482853.39 E0160557.34				A6000+		RNAV 1	
TF	WW666	no	N482421.00 E0162416.00	105° (110.3°)	13.0		A5000+		RNAV 1	
TF	WW664	no	N481906.20 E0162621.72	160° (165.1°)	5.4	right	A5000+		RNAV 1	
TF	WW658	no	N481825.63 E0161506.57	260° (264.9°)	7.5	right	A5000+		RNAV 1	
TF	WW656	no	N482036.35 E0160821.89	291° (295.9°)	5.0	right	A5000+	K230-	RNAV 1	
TF	WW654	no	N482246.68 E0160136.63	291° (295.8°)	5.0		A5000+		RNAV 1	
TF	WW653	no	N481816.47 E0155821.58	201° (205.7°)	5.0	left	A5000+		RNAV 1	
TF	WW652	no	N481606.33 E0160506.38	111° (115.7°)	5.0	left	A5000+		RNAV 1	
TF	WW651	no	N481401.04 E0161125.92	111° (116.3°)	4.7		A5000+		RNAV 1	

Designator	Route	Remarks
<b>PESAT 5 K</b> Pesat five kilo transition	PESAT - WW697 - WW665 - WW663 - WW661 - WW659 - WW657 - WW655 - WW653 - WW652 - WW651	

**RNAV Transition Coding Table of PESAT 5 K**

Path Terminator	Waypoint			Course/ Track ° MAG (° True)	DIST NM	Turn Direction	Constraints		Navigation Specification	Remarks
	Identifier	Flyover	Coordinates				Level	Speed		
IF	PESAT	no	N474253.75 E0170311.37				A6000+		RNAV 1	
TF	WW697	no	N475430.00 E0163959.00	302° (306.7°)	19.5		A5000+		RNAV 1	
TF	WW665	no	N480109.57 E0163035.57	312° (316.6°)	9.2	right	A5000+		RNAV 1	
TF	WW663	no	N480442.08 E0162143.48	296° (300.8°)	6.9	left	A5000+		RNAV 1	
TF	WW661	no	N480715.12 E0161518.46	296° (300.7°)	5.0		A5000+		RNAV 1	
TF	WW659	no	N480925.86 E0160835.23	291° (295.9°)	5.0	left	A5000+		RNAV 1	
TF	WW657	no	N481136.21 E0160151.44	291° (295.8°)	5.0		A5000+	K230-	RNAV 1	
TF	WW655	no	N481346.17 E0155507.08	291° (295.7°)	5.0		A5000+		RNAV 1	
TF	WW653	no	N481816.47 E0155821.58	021° (025.6°)	5.0	right	A5000+		RNAV 1	
TF	WW652	no	N481606.33 E0160506.38	111° (115.7°)	5.0	right	A5000+		RNAV 1	
TF	WW651	no	N481401.04 E0161125.92	111° (116.3°)	4.7		A5000+		RNAV 1	

**RNAV Holding**

Holding Point	Inbound Track ° True	Inbound Track ° MAG	Turn Direction	MAX IAS	Minimum Holding Altitude FT MSL / FL	Time	DIST NM	Remarks
BALAD	038.6°	034°	right		A8000	1 MIN		
MABOD	167.7°	163°	right		A6000	1 MIN		
NERDU	107.6°	103°	right		A6000	1 MIN		
PESAT	273.9°	269°	left		A6000	1 MIN		