

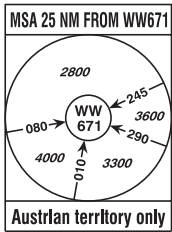
Radar	134.675Mhz, 118.775Mhz, 124.550Mhz, 129.050Mhz
Arrival	119.800Mhz, 134.125Mhz
Tower	119.400Mhz, 123.800Mhz
Ground	121.600Mhz, 121.775Mhz
Delivery	122.125Mhz
Atis	122.955Mhz, 121.730Mhz

IF UNABLE TO FOLLOW  
TRANSITION ADVISE  
ATC IMMEDIATELY !

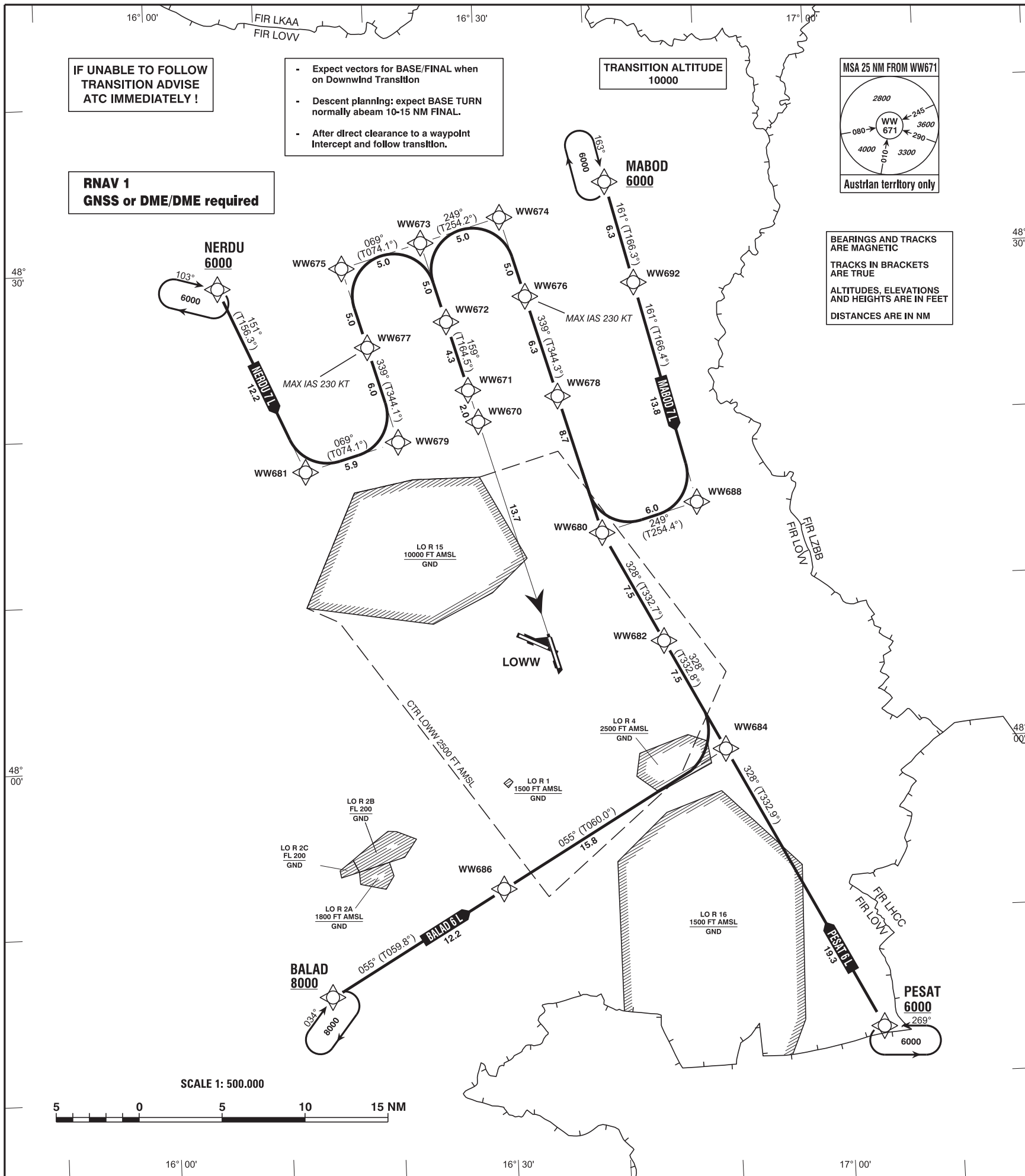
- Expect vectors for BASE/FINAL when on Downwind Transition
- Descent planning: expect BASE TURN normally abeam 10-15 NM FINAL.
- After direct clearance to a waypoint Intercept and follow transition.

RNAV 1  
GNSS or DME/DME required

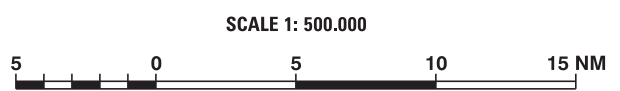
TRANSITION ALTITUDE  
10000



BEARINGS AND TRACKS  
ARE MAGNETIC  
TRACKS IN BRACKETS  
ARE TRUE  
ALTITUDES, ELEVATIONS  
AND HEIGHTS ARE IN FEET  
DISTANCES ARE IN NM



Intentionally left blank



For Flight Simulation and non commercial use only!  
Courtesy of Austro Control GmbH

vacc  
AUSTRIA

CHANGE: EDITORIAL

Designator	Route	Remarks
<b>BALAD 6 L</b> Balad six lima transition	BALAD - WW686 - WW684 - WW682 - WW680 - WW678 - WW676 - WW674 - WW673 - WW672 - WW671	

RNAV Transition Coding Table of BALAD 6 L

Path Terminator	Waypoint			Course/ Track ° MAG (° True)	DIST NM	Turn Direction	Constraints		Navigation Specification	Remarks
	Identifier	Flyover	Coordinates				Level	Speed		
IF	BALAD	no	N474600.21 E0161402.56				A8000+		RNAV 1	
TF	WW686	no	N475208.28 E0162943.88	055° (059.8°)	12.2		A5000+		RNAV 1	
TF	WW684	no	N480001.58 E0165007.89	055° (060.0°)	15.8		A5000+		RNAV 1	
TF	WW682	no	N480641.40 E0164500.42	328° (332.8°)	7.5	left	A5000+		RNAV 1	
TF	WW680	no	N481321.01 E0163951.68	328° (332.7°)	7.5		A5000+		RNAV 1	
TF	WW678	no	N482141.30 E0163621.20	339° (344.3°)	8.7	right	A5000+		RNAV 1	
TF	WW676	no	N482746.61 E0163346.76	339° (344.3°)	6.3		A5000+	K230-	RNAV 1	
TF	WW674	no	N483235.64 E0163144.11	339° (344.3°)	5.0		A5000+		RNAV 1	
TF	WW673	no	N483113.99 E0162429.77	249° (254.2°)	5.0	left	A5000+		RNAV 1	
TF	WW672	no	N482625.53 E0162632.83	159° (164.2°)	5.0	left	A5000+		RNAV 1	
TF	WW671	no	N482215.23 E0162816.89	159° (164.5°)	4.3		A5000+		RNAV 1	

For Flight Simulation and non commercial use only !  
 Courtesy of Austro Control GmbH

Designator		Route						Remarks		
<b>MABOD 7 L</b> Mabod seven lima transition		MABOD - WW692 - WW688 - WW680 - WW678 - WW676 - WW674 - WW673 - WW672 - WW671								
RNAV Transition Coding Table of MABOD 7 L										
Path Terminator	Waypoint			Course/ Track ° MAG (° True)	DIST NM	Turn Direction	Constraints		Navigation Specification	Remarks
	Identifier	Flyover	Coordinates				Level	Speed		
IF	MABOD	no	N483428.41 E0164124.35				A6000+		RNAV 1	
TF	WW692	no	N482821.00 E0164339.00	161° (166.3°)	6.3		A5000+		RNAV 1	
TF	WW688	no	N481457.85 E0164830.52	161° (166.4°)	13.8		A5000+		RNAV 1	
TF	WW680	no	N481321.01 E0163951.68	249° (254.4°)	6.0	right	A5000+		RNAV 1	
TF	WW678	no	N482141.30 E0163621.20	339° (344.3°)	8.7	right	A5000+		RNAV 1	
TF	WW676	no	N482746.61 E0163346.76	339° (344.3°)	6.3		A5000+	K230-	RNAV 1	
TF	WW674	no	N483235.64 E0163144.11	339° (344.3°)	5.0		A5000+		RNAV 1	
TF	WW673	no	N483113.99 E0162429.77	249° (254.2°)	5.0	left	A5000+		RNAV 1	
TF	WW672	no	N482625.53 E0162632.83	159° (164.2°)	5.0	left	A5000+		RNAV 1	
TF	WW671	no	N482215.23 E0162816.89	159° (164.5°)	4.3		A5000+		RNAV 1	

For Flight Simulation and non commercial use only !

Courtesy of Austro Control GmbH

Designator	Route	Remarks
<b>NERDU 7 L</b> Nerdu seven lima transition	NERDU - WW681 - WW679 - WW677 - WW675 - WW673 - WW672 - WW671	

RNAV Transition Coding Table of NERDU 7 L

Path Terminator	Waypoint			Course/ Track ° MAG (° True)	DIST NM	Turn Direction	Constraints		Navigation Specification	Remarks
	Identifier	Flyover	Coordinates				Level	Speed		
IF	NERDU	no	N482853.39 E0160557.34				A6000+		RNAV 1	
TF	WW681	no	N481741.38 E0161319.97	151° (156.3°)	12.2		A5000+		RNAV 1	
TF	WW679	no	N481917.45 E0162147.40	069° (074.1°)	5.9	left	A5000+		RNAV 1	
TF	WW677	no	N482503.52 E0161919.46	339° (344.1°)	6.0	left	A5000+	K230-	RNAV 1	
TF	WW675	no	N482951.86 E0161715.76	339° (344.1°)	5.0		A5000+		RNAV 1	
TF	WW673	no	N483113.99 E0162429.77	069° (074.1°)	5.0	right	A5000+		RNAV 1	
TF	WW672	no	N482625.53 E0162632.83	159° (164.2°)	5.0	right	A5000+		RNAV 1	
TF	WW671	no	N482215.23 E0162816.89	159° (164.5°)	4.3		A5000+		RNAV 1	

Designator	Route	Remarks
<b>PESAT 6 L</b> Pesat six lima transition	PESAT - WW684 - WW682 - WW680 - WW678 - WW676 - WW674 - WW673 - WW672 - WW671	

**RNAV Transition Coding Table of PESAT 6 L**

Path Terminator	Waypoint			Course/ Track ° MAG (° True)	DIST NM	Turn Direction	Constraints		Navigation Specification	Remarks
	Identifier	Flyover	Coordinates				Level	Speed		
IF	PESAT	no	N474253.75 E0170311.37				A6000+		RNAV 1	
TF	WW684	no	N480001.58 E0165007.89	328° (332.9°)	19.3		A5000+		RNAV 1	
TF	WW682	no	N480641.40 E0164500.42	328° (332.8°)	7.5		A5000+		RNAV 1	
TF	WW680	no	N481321.01 E0163951.68	328° (332.7°)	7.5		A5000+		RNAV 1	
TF	WW678	no	N482141.30 E0163621.20	339° (344.3°)	8.7	right	A5000+		RNAV 1	
TF	WW676	no	N482746.61 E0163346.76	339° (344.3°)	6.3		A5000+	K230-	RNAV 1	
TF	WW674	no	N483235.64 E0163144.11	339° (344.3°)	5.0		A5000+		RNAV 1	
TF	WW673	no	N483113.99 E0162429.77	249° (254.2°)	5.0	left	A5000+		RNAV 1	
TF	WW672	no	N482625.53 E0162632.83	159° (164.2°)	5.0	left	A5000+		RNAV 1	
TF	WW671	no	N482215.23 E0162816.89	159° (164.5°)	4.3		A5000+		RNAV 1	

**RNAV Holding**

Holding Point	Inbound Track ° True	Inbound Track ° MAG	Turn Direction	MAX IAS	Minimum Holding Altitude FT MSL / FL	Time	DIST NM	Remarks
BALAD	038.6°	034°	right		A8000	1 MIN		
MABOD	167.7°	163°	right		A6000	1 MIN		
NERDU	107.6°	103°	right		A6000	1 MIN		
PESAT	273.9°	269°	left		A6000	1 MIN		

For Flight Simulation and non commercial use only !  
Courtesy of Austro Control GmbH  
vacc  
AUSTRIA