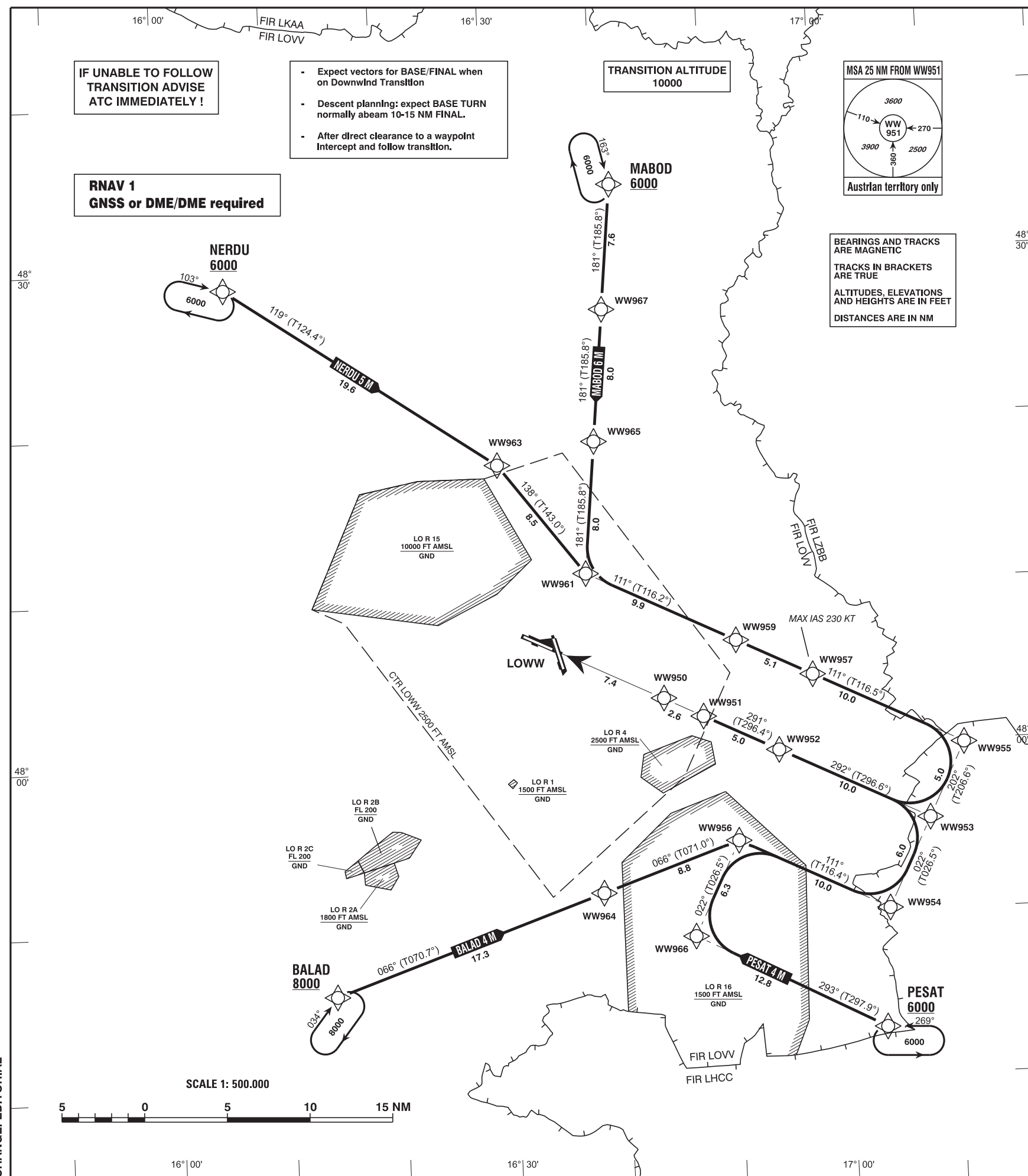


Radar	134.675Mhz, 118.775Mhz, 124.550Mhz, 129.050Mhz
Arrival	119.800Mhz, 134.125Mhz
Tower	119.400Mhz, 123.800Mhz
Ground	121.600Mhz, 121.775Mhz
Delivery	122.125Mhz
Atis	122.955Mhz, 121.730Mhz

For Flight Simulation and non commercial use only!
Courtesy of Austro Control GmbH



Intentionally left blank

CHANGE: EDITORIAL

Designator	Route	Remarks
BALAD 4 M Balad four mike transition	BALAD - WW964 - WW956 - WW954 - WW953 - WW952 - WW951	

RNAV Transition Coding Table of BALAD 4 M

Path Terminator	Waypoint			Course/ Track ° MAG (° True)	DIST NM	Turn Direction	Constraints		Navigation Specification	Remarks
	Identifier	Flyover	Coordinates				Level	Speed		
IF	BALAD	no	N474600.21 E0161402.56				A8000+		RNAV 1	
TF	WW964	no	N475141.05 E0163818.48	066° (070.7°)	17.3		A6000+		RNAV 1	
TF	WW956	no	N475431.53 E0165037.01	066° (071.0°)	8.8		A6000+		RNAV 1	
TF	WW954	no	N475004.25 E0170355.10	111° (116.4°)	10.0	right	A6000+		RNAV 1	
TF	WW953	no	N475526.16 E0170754.39	022° (026.5°)	6.0	left	A6000+		RNAV 1	
TF	WW952	no	N475953.89 E0165435.22	292° (296.6°)	10.0	left	A3000+		RNAV 1	
TF	WW951	no	N480207.16 E0164754.80	291° (296.4°)	5.0		A3000+		RNAV 1	

For Flight Simulation and non commercial use only !
 Courtesy of Austro Control GmbH

Designator	Route	Remarks
MABOD 6 M Mabod six mike transition	MABOD - WW967 - WW965 - WW961 - WW959 - WW957 - WW955 - WW953 - WW952 - WW951	

RNAV Transition Coding Table of MABOD 6 M

Path Terminator	Waypoint			Course/ Track ° MAG (° True)	DIST NM	Turn Direction	Constraints		Navigation Specification	Remarks
	Identifier	Flyover	Coordinates				Level	Speed		
IF	MABOD	no	N483428.41 E0164124.35				A6000+		RNAV 1	
TF	WW967	no	N482656.31 E0164015.14	181° (185.8°)	7.6		A6000+		RNAV 1	
TF	WW965	no	N481858.99 E0163902.43	181° (185.8°)	8.0		A6000+		RNAV 1	
TF	WW961	no	N481101.63 E0163750.10	181° (185.8°)	8.0		A6000+		RNAV 1	
TF	WW959	no	N480637.91 E0165107.40	111° (116.2°)	9.9	left	A6000+		RNAV 1	
TF	WW957	no	N480422.39 E0165754.40	111° (116.5°)	5.1		A6000+	K230-	RNAV 1	
TF	WW955	no	N475954.29 E0171114.38	111° (116.5°)	10.0		A6000+		RNAV 1	
TF	WW953	no	N475526.16 E0170754.39	202° (206.6°)	5.0	right	A6000+		RNAV 1	
TF	WW952	no	N475953.89 E0165435.22	292° (296.6°)	10.0	right	A3000+		RNAV 1	
TF	WW951	no	N480207.16 E0164754.80	291° (296.4°)	5.0		A3000+		RNAV 1	

For Flight Simulation and non commercial use only !

Courtesy of Austro Control GmbH

Designator	Route	Remarks
NERDU 5 M Nerdu five mike transition	NERDU - WW963 - WW961 - WW959 - WW957 - WW955 - WW953 - WW952 - WW951	

RNAV Transition Coding Table of NERDU 5 M

Path Terminator	Waypoint			Course/ Track ° MAG (° True)	DIST NM	Turn Direction	Constraints		Navigation Specification	Remarks
	Identifier	Flyover	Coordinates				Level	Speed		
IF	NERDU	no	N482853.39 E0160557.34				A6000+		RNAV 1	
TF	WW963	no	N481746.17 E0163013.41	119° (124.4°)	19.6		A6000+		RNAV 1	
TF	WW961	no	N481101.63 E0163750.10	138° (143.0°)	8.5	right	A6000+		RNAV 1	
TF	WW959	no	N480637.91 E0165107.40	111° (116.2°)	9.9	left	A6000+		RNAV 1	
TF	WW957	no	N480422.39 E0165754.40	111° (116.5°)	5.1		A6000+	K230-	RNAV 1	
TF	WW955	no	N475954.29 E0171114.38	111° (116.5°)	10.0		A6000+		RNAV 1	
TF	WW953	no	N475526.16 E0170754.39	202° (206.6°)	5.0	right	A6000+		RNAV 1	
TF	WW952	no	N475953.89 E0165435.22	292° (296.6°)	10.0	right	A3000+		RNAV 1	
TF	WW951	no	N480207.16 E0164754.80	291° (296.4°)	5.0		A3000+		RNAV 1	

For Flight Simulation and non commercial use only !
Courtesy of Austro Control GmbH

Designator	Route	Remarks
PESAT 4 M Pesat four mike transition	PESAT - WW966 - WW956 - WW954 - WW953 - WW952 - WW951	

RNAV Transition Coding Table of PESAT 4 M

Path Terminator	Waypoint			Course/Track ° MAG (° True)	DIST NM	Turn Direction	Constraints		Navigation Specification	Remarks
	Identifier	Flyover	Coordinates				Level	Speed		
IF	PESAT	no	N474253.75 E0170311.37				A6000+		RNAV 1	
TF	WW966	no	N474851.10 E0164624.08	293° (297.9°)	12.8		A6000+		RNAV 1	
TF	WW956	no	N475431.53 E0165037.01	022° (026.5°)	6.3	right	A6000+		RNAV 1	
TF	WW954	no	N475004.25 E0170355.10	111° (116.4°)	10.0	right	A6000+		RNAV 1	
TF	WW953	no	N475526.16 E0170754.39	022° (026.5°)	6.0	left	A6000+		RNAV 1	
TF	WW952	no	N475953.89 E0165435.22	292° (296.6°)	10.0	left	A3000+		RNAV 1	
TF	WW951	no	N480207.16 E0164754.80	291° (296.4°)	5.0		A3000+		RNAV 1	

Courtesy of Austro Control GmbH

RNAV Holding								
Holding Point	Inbound Track ° True	Inbound Track ° MAG	Turn Direction	MAX IAS	Minimum Holding Altitude FT MSL / FL	Time	DIST NM	Remarks
BALAD	038.6°	034°	right		A8000	1 MIN		
MABOD	167.7°	163°	right		A6000	1 MIN		
NERDU	107.6°	103°	right		A6000	1 MIN		
PESAT	273.9°	269°	left		A6000	1 MIN		

For Flight Simulation and non commercial use only !

vacc
AUSTRIA