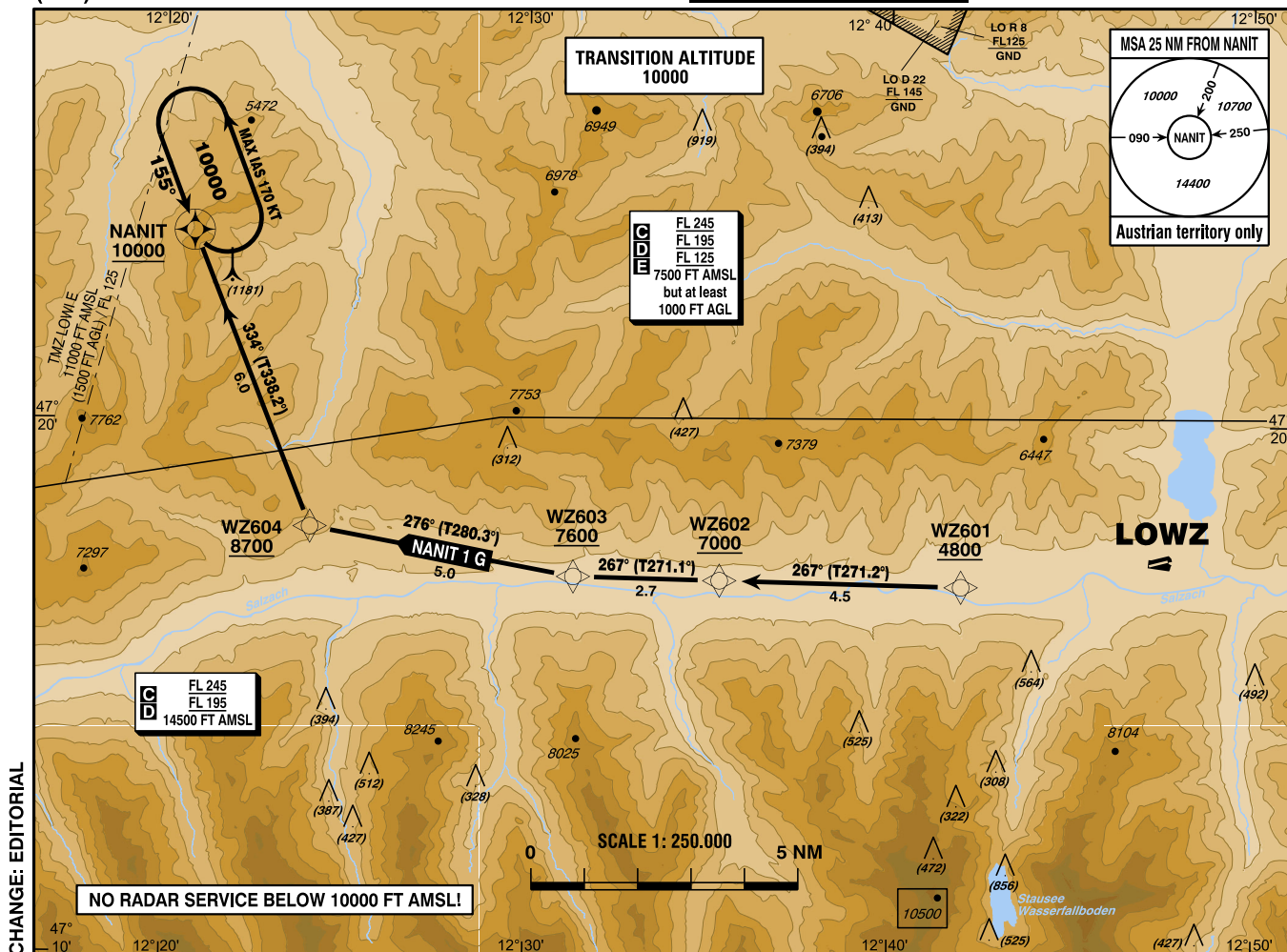


STANDARD DEPARTURE CHART - INSTRUMENT (SID) - ICAO

VAR 4° E

Radar 128.975Mhz
Radio 119.705Mhz

ZELL AM SEE (LOWZ)
ÖSTERREICH AUSTRIA



**RNAV 1
GNSS required**

Departing from LOWZ only allowed as VFR flight,
IFR starts, when passing WZ601, established on track to
WZ602 and passing 4800 FT AMSL

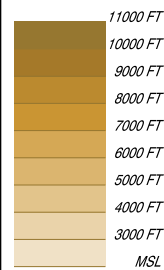
IFR procedure is within airspace class G until 2 NM north
of WZ604

Operating as IFR flight along SID subject to ATC clearance

Obtain further ATC-Route clearance on FREQ 128.975

Flights shall contact INNSBRUCK RADAR FREQ 128.975
when passing 7000 FT AMSL

CONTOUR LEGEND



**BEARINGS AND TRACKS
ARE MAGNETIC**

**TRACKS IN BRACKETS
ARE TRUE**

**ALTITUDES, ELEVATIONS
AND HEIGHTS ARE IN FEET**

DISTANCES ARE IN NM

Designator	Route	After Take-Off		Remarks
		Climb to ..initially	Expect FREQ	
NANIT 1 G Nanit one Golf departure	WZ601 - WZ602 - WZ603 - WZ604 - NANIT	By ATC	INNSBRUCK RADAR 128.975	Climb gradient at least 8.0% (490 FT/NM) until WZ602, thereafter 3.6% (220 FT/NM).
Contact INNSBRUCK RADAR when passing 7000 FT AMSL				

RNAV SID Coding Table of NANIT 1 G										
Path Terminator	Waypoint			Course/ Track ° MAG (° True)	DIST NM	Turn Direction	Constraints		Navigation Specification	Remarks
	Identifier	Flyover	Coordinates				Level	Speed		
IF	WZ601		N471700.56 E0124158.57				A4800+		RNAV 1	
TF	WZ602	no	N471706.12 E0123519.70	267° (271.2°)	4.5		A7000+		RNAV 1	
TF	WZ603	no	N471709.30 E0123118.09	267° (271.1°)	2.7		A7600+		RNAV 1	
TF	WZ604	no	N471803.14 E0122402.12	276° (280.3°)	5.0	right	A8700+	K165-	RNAV 1	
TF	NANIT	yes	N472334.87 E0122047.17	334° (338.2°)	6.0	right	A10000+	K165-	RNAV 1	

RNAV Holding								
Holding Point	Inbound Track °True	Inbound Track °MAG	Turn Direction	MAX IAS	Minimum Holding Altitude FT MSL / FL	Time	DIST NM	Remarks
NANIT	159.0°	155°	left	K170-	10000 FT MSL	1 MIN		