

For Flight Simulation and non commercial use only!

Courtesy of Austro Control GmbH

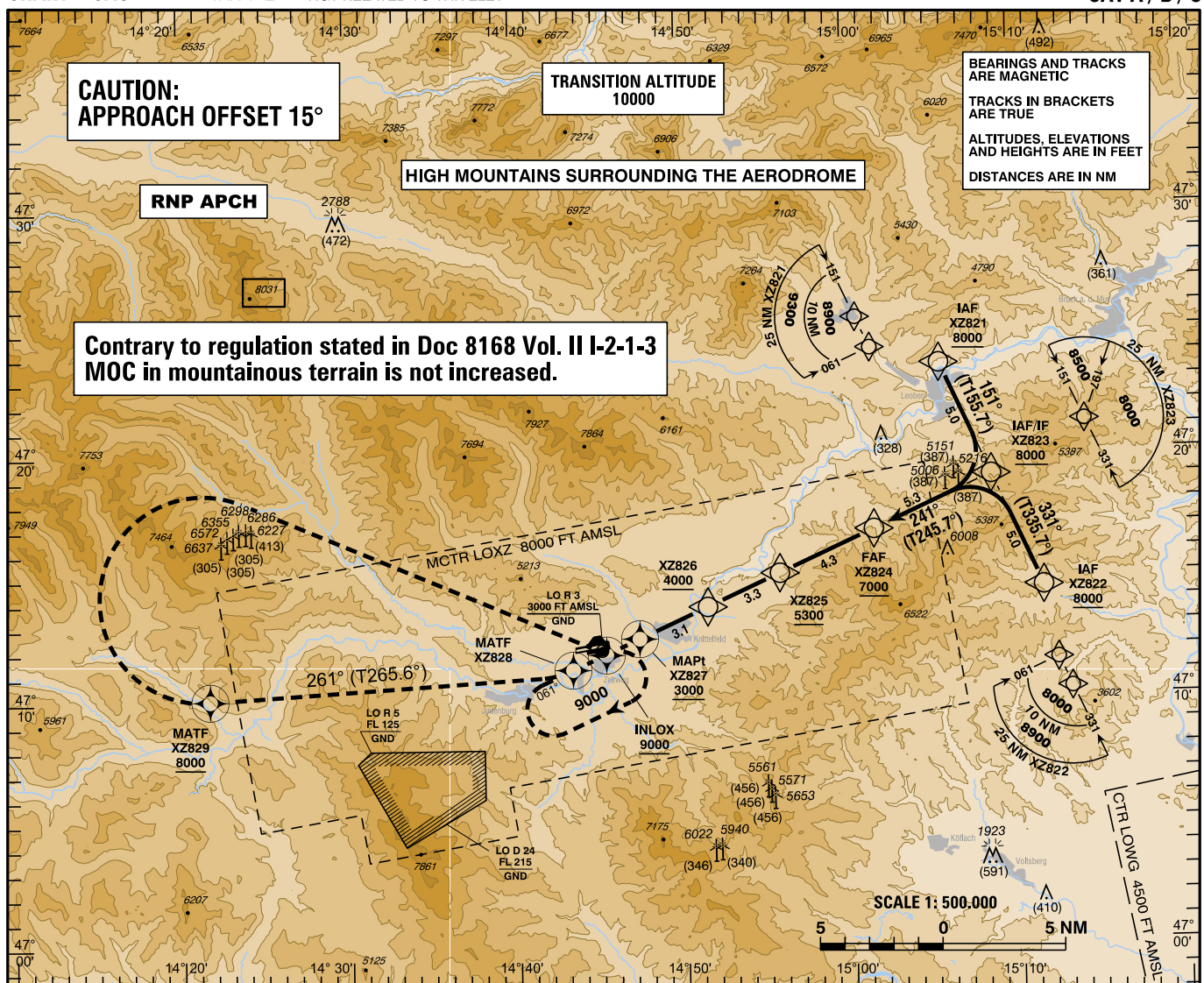
INSTRUMENT APPROACH CHART - ICAO

VAR 4° E

AD ELEV 2264 FT
THR 26 ELEV 2200 FT
HGT RELATED TO THR ELEV

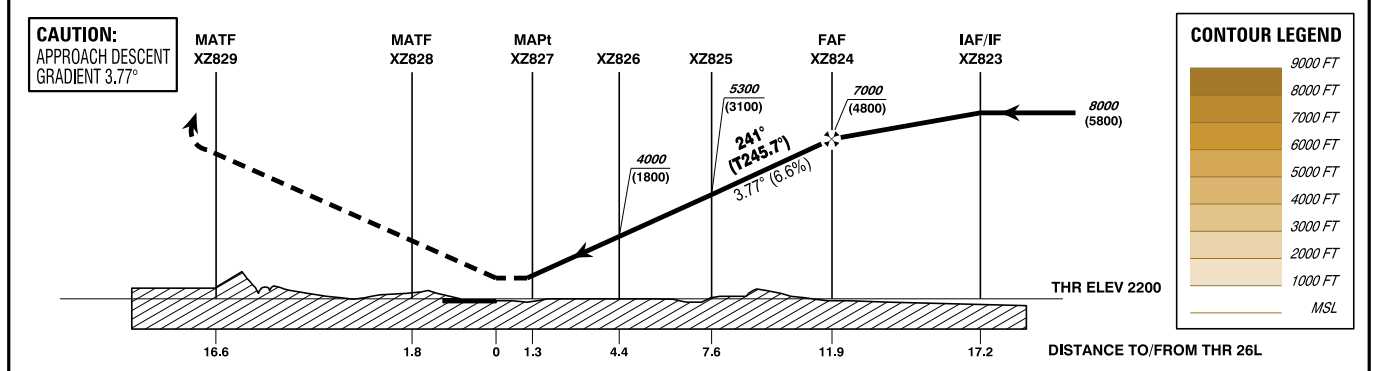
Radar	129.475Mhz
PAR	136.425Mhz
Tower	135.375Mhz
Atis	132.525Mhz

ZELTWEG (LOXZ)
ÖSTERREICH AUSTRIA
RNP RWY 26L
CAT A / B / C



Contrary to regulation stated in Doc 8168 Vol. II I-2-1-3 MOC in mountainous terrain is not increased.

CHANGE: EDITORIAL



MISSED APPROACH: CLIMB ON RNAV MISSED APPROACH TRACK TO INLOX AND HOLD;

OCA (OCH) IN FT	MA CLIMB GRADIENT	A	B	C
LNAV	2.5%	5290		
	5.0%	3000		

XZ824 to XZ827 - DISTANCE 10.6 NM (Timing not authorized for defining the MAPt)							
GS (KT)	80	100	120	140	160	180	
XZ824 - XZ827	MIN : SEC	7:57	6:22	5:18	4:33	3:59	3:32
Rate of descent (6.6%)	FT / MIN	530	670	800	930	1070	1200

DIST In NM to XZ827	10	9	8	7	6	5	4	3	2	1
ALTITUDE (HEIGHT)	6760 (4560)	6360 (4160)	5960 (3760)	5560 (3360)	5160 (2960)	4760 (2560)	4360 (2160)	3960 (1760)	3560 (1360)	3160 (960)

PROCEDURE DESIGN: Bundesministerium für Landesverteidigung; PUBLICATION: Austro Control GmbH

Instrument Approach Procedure Coding Table Zeltweg RNP RWY 26L											
Path Terminator	Waypoint				Course/Track ° MAG (° True)	DIST NM	Turn Direction	Constraints		Navigation Specification	Remarks
	Identifier	Type	Flyover	Coordinates				Level	Speed		
IF	XZ821	IAF	no	N472332.32 E0150533.02				A8000+		RNP APCH	
IF	XZ822	IAF	no	N471425.79 E0151136.02				A8000+		RNP APCH	
IF / TF	XZ823	IAF	no	N471859.06 E0150834.66	151° (155.7°)	5.0	right	A8000+	K210-	RNP APCH	
					331° (335.7°)	5.0	left				
TF	XZ824	FAF	no	N471648.40 E0150129.36	241° (245.7°)	5.3		A7000+		RNP APCH	
TF	XZ825		no	N471503.62 E0145548.43	241° (245.7°)	4.3		A5300+		RNP APCH	
TF	XZ826		no	N471343.49 E0145127.85	241° (245.7°)	3.3		A4000+		RNP APCH	
TF	XZ827	MAPt	yes	N471227.71 E0144721.49	241° (245.7°)	3.1				RNP APCH	
TF	XZ828	MATF	yes	N471113.64 E0144320.94	241° (245.7°)	3.0				RNP APCH	
TF	XZ829	MATF	yes	N471006.47 E0142137.25	261° (265.6°)	14.9	right	A8000+		RNP APCH	
DF	INLOX	MAHF	yes	N471151.95 E0144521.40			right	A9000+		RNP APCH	
RNAV Holding											
Holding Point	Inbound Track ° True	Inbound Track ° MAG	Turn Direction	MAX IAS	Minimum Holding Altitude FT MSL / FL	Time	DIST NM	Remarks			
INLOX	065.3°	061°	right		A9000	1 MIN					

For Flight Simulation and non commercial use only !
Courtesy of Austro Control GmbH

vacc
AUSTRIA